



**KANGURU™**  
*Secure. Anytime. Anywhere.*

## Optical Duplicator User Manual



Copyright © 2023, All Rights Reserved

Version: 4.0.1

## Notices and Information

Please be aware of the following points before using your Kanguru Duplicator Copyright 2023, Kanguru Solutions. All rights reserved. DOS®, Windows 7®, Windows 8®, Windows 10®, Windows 11®, Windows Vista®, Windows XP® are registered trademarks of Microsoft Inc. Apple® and Macintosh® are registered trademarks of Apple Computer Inc. IBM and OS/2 are registered trademarks of the International Business Machines Corporation. All other brand or product names are trademarks of their respective companies or organizations.

Kanguru Solutions will not be held responsible for any illegal use of this product nor any losses incurred while using this product. The user himself is responsible for the copyright laws, and is fully responsible for any illegal actions taken.

### Customer Service

To obtain service or technical support for your system, please contact Kanguru Solutions Technical Support Department at 508-376-4245, or visit [www.Kanguru.com](http://www.Kanguru.com) for web support.

### Legal notice

In no event shall Kanguru Solutions' liability exceed the price paid for the product from direct, indirect, special, incidental, or consequential software, or its documentation. Kanguru Solutions offers no refunds for its products. Kanguru Solutions makes no warranty or representation, expressed, implied, or statutory, with respect to its products or the contents or use of this documentation and all accompanying software, and specifically disclaims its quality, performance, merchantability, or fitness for any particular purpose. Kanguru Solutions reserves the right to revise or update its products, software, or documentation without obligation to notify any individual or entity.

### Export Law Compliance

Regardless of any disclosure made to Kanguru Solutions pertaining to the ultimate destination of the specific Kanguru product, you warrant that you will not export, directly or indirectly, any Kanguru product without first obtaining the approval of Kanguru Solutions and the appropriate export license from the Department of Commerce or other agency of the United States Government. Kanguru Solutions has a wide range of products and each product family has different license requirements relative to exports.

### FCC Compliance Statements

This equipment has been tested and found to comply with the limits for a Class B digital device, pursuant to Part 15 of the FCC Rules. These limits are designed to provide reasonable protection against harmful interference in a residential installation. This equipment generates, uses and can radiate radio frequency energy and, if not installed and used in accordance with the instructions, there is no guarantee that interference will not occur in a particular installation. If this equipment does cause harmful interference to equipment off and on, the user is encouraged to try to correct the interference by one or more of the following measures:

- Reorient or relocate the receiving antenna.
- Increase the Distance between the equipment and receiver
- Connect the equipment into an outlet on a circuit different from that to which the receiver is connected.
- Consult the dealer or an experienced radio/TV technician for help.

# Contents

<b>Chapter 1</b>	<b>1 Introduction / Package Contents</b>
	2 Getting to Know Your Kanguru Duplicator
	3 System Overview
	4 LCD Panel
	6 Compatible Media
	7 General Operations
	8 Shortcut Buttons
<b>Chapter 2</b>	<b>9 The Main Menu</b>
	10 Copy
	12 Compare
	14 Copy & Compare
	16 Test
	18 Test & Copy
	20 Mix Audio Tracks
	23 Select Source
	24 Erase
	26 Job Counter
	27 Auto Copy
	29 External Connection
<b>Chapter 3</b>	<b>30 Setup Menu</b>
	31 Select Burn Speed
	32 Duplication Mode (hard drive models only)
	33 Auto Quick Compare
	34 Auto Start
	35 Language
	36 Read Error Skip
	37 Writing Method

# Contents

	38	Max Audio, VCD & CDG Speed
	39	Button Sound
	40	Startup Menu Item
	41	DVD+R High Compatibility Mode
	42	ISRC
	43	Disable Drives
	44	Overburn
	45	Select Loading Drive (hard drive models only)
	46	Advanced Setup
	47	Disc Info
	48	System Info
	49	Device Info
	50	Load Defaults
	51	Boot Password
	55	System Counter (hard drive models only)
	56	Update Firmware
<b>Chapter 4</b>	<b>57</b>	<b>Duplicators with Internal Hard Drives</b>
	58	Mix Audio Tracks Using Hard Drive
	61	Copy Using Hard Drive
	63	Hard Drive Setup
	64	Select Partition
	65	Load Partition
	67	Rename Partition
	68	Delete Partition
	69	Partition Info
	70	Format Hard Drive
<b>Chapter 5</b>	<b>71</b>	<b>Software</b>
	72	CopyConnect for Mac
	73	CopyConnect Installation
	77	How to Use CopyConnect
	81	Kanguru Media Manager
	82	Media Manager Installation
	83	How to Use Media Manager
	85	Duplicator Network Center

# Contents

	<b>86</b>	Network Center Installation
	<b>87</b>	How to Use Network Center
	<b>89</b>	Network Center Troubleshooting
<b>Chapter 6</b>	<b>90</b>	<b>Warranty and Tech Support</b>
	<b>91</b>	Troubleshooting
	<b>93</b>	Error Codes
	<b>97</b>	RMA Procedure

Thank you for purchasing the Kanguru Optical Duplicator from Kanguru Solutions. We are proud of the quality and reliability of our Duplication products and hope that this product meets and exceeds your expectations. Your Kanguru Duplicator is designed for ease of use and is ready to begin duplicating straight out of the box. Simply plug it in, power it on and follow these instructions to begin duplicating within a matter of minutes. Enjoy!

## Features

- ✓ Stand-Alone DVD-R/RW & DL / CD-R/RW duplicator (BD-R/RE on Blu-ray models only)
- ✓ Supports 1, 2, 3, 5, 7, or 11 BD/DVD/CD recorders (depending on model)
- ✓ Easy-to-read, two-line LCD display for status and error reporting
- ✓ One touch duplication
- ✓ Speed selectable copying
- ✓ Copy and Compare functions to ensure successful duplication
- ✓ Test function to ensure recording stability (DVD-R/RW and CD-R/RW only)
- ✓ Ability to copy ISRC codes on CD-DA masters
- ✓ 500GB hard drive for BD/DVD/CD image archival (hard drive models only)
- ✓ Hard drive allows for up to 100 full 4.7GB DVD images to be stored
- ✓ Use the Hard Drive as the source drive in place of any DVD-RW drive

## Package Contents

Please check that all of the following items came included with your Kanguru Duplicator. If any of the following items are missing, please call Kanguru Solutions' Tech Support department at: (508) 376-4245, extension 2 and replacement parts will be shipped to you ASAP.

- ✓ Kanguru Duplicator
- ✓ Installed 500GB internal hard drive (hard drive models only)
- ✓ Power Cord
- ✓ USB Cable
- ✓ Ethernet Cable (network models only)
- ✓ User Guide
- ✓ Software CD
- ✓ Duplicator Network Software (network models only)
- ✓ Kanguru Media Manager (hard drive models only)

## Getting to Know Your Kanguru Duplicator

This chapter will get you acquainted with your Kanguru Duplicator's hardware and user interface. Please read through this section carefully and make sure you are fully aware of the content presented here before operating your Kanguru Duplicator.

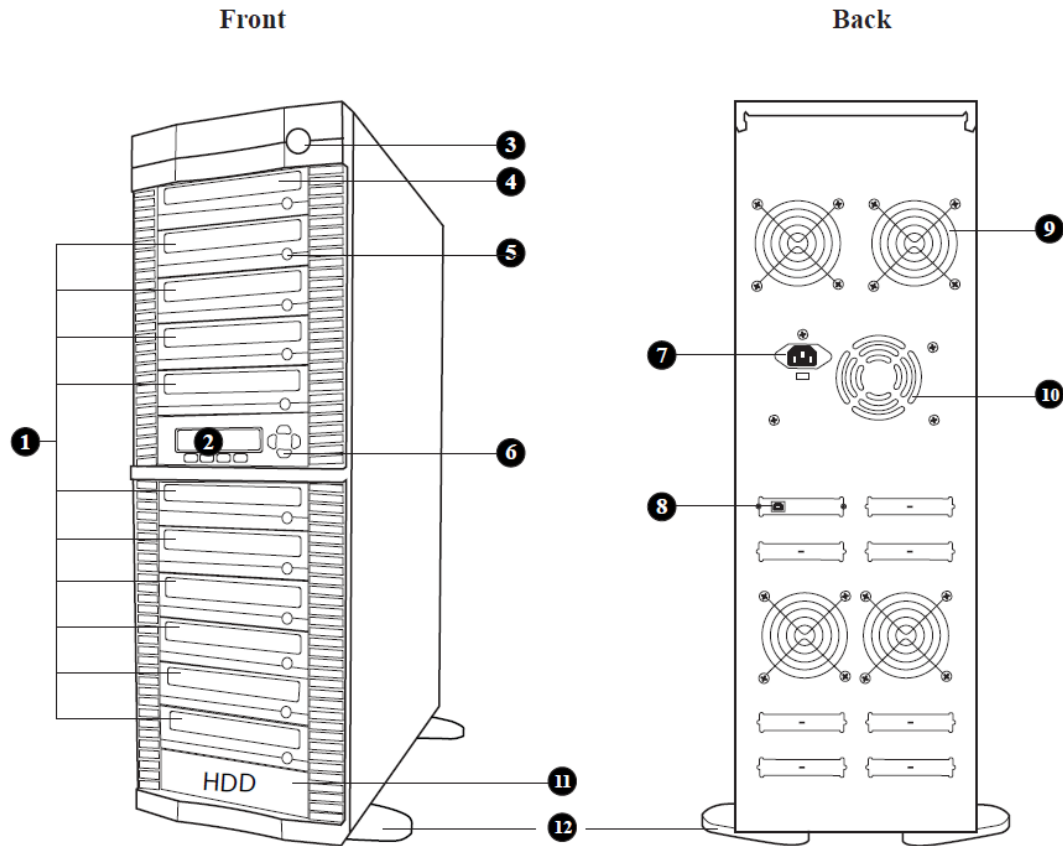
### Hardware Setup

- ✓ Place the Kanguru Duplicator where there is proper ventilation. Avoid using the Duplicator in environments with high temperatures.
- ✓ Before plugging in the AC Power Cable, please make sure that the voltage is adjusted to the same as your local voltage 110V/220V. Make sure that sufficient power is supplied to the Kanguru Duplicator. Incorrect power may cause faulty operation.
- ✓ If the Kanguru Duplicator was stored in a location where the temperature dropped below 32°F (0°C) within the past 24 hours, please leave the system in a warm room with temperatures of at least 65°F (19°C) for 4 hours prior to powering it on for the first time. Failure to do so may cause irreparable harm and prevent the system from functioning.
- ✓ It is very important that the Kanguru Duplicator operates in a dust free, clean environment since dust is the number one killer of optical recording devices. Failure to keep dust out of the Duplicator may cause damage to your unit. We strongly suggest you place an Air Duster next to the system and constantly use it to keep the surface of the Duplicator clear off dust. Do not try to use the Air Duster to clean the system while the reader/writer trays are open. In doing so, you may inadvertently blow dust into the recording device.
- ✓ In order to operate the Kanguru Duplicator as a standalone unit (no connection to the computer), make sure that the unit is not connected to a PC via USB.

### Things to remember

- ✓ Make sure that sufficient power is supplied to the Kanguru Duplicator. Incorrect power may cause faulty operation.
- ✓ The type of system you purchase will determine the type of discs you are able to copy. If you purchased a DVD Duplicator, then you can copy DVD and CD formats. If you purchased a Blu-ray Duplicator, then you can copy Blu-ray, DVD, and CD formats. If you have a Blu-ray capable system, the terms CD or DVD can be substituted with Blu-ray within the text of this manual.
- ✓ The Kanguru Duplicator CANNOT duplicate any CD, DVD, or Blu-ray discs that have Copyright Protection using encryption methods, such as CSS.
- ✓ The Kanguru Duplicator CANNOT copy across formats. This means that you cannot copy a DVD master onto a recordable CD or vice versa. In addition, you cannot copy the same formats if the discs have different maximum capacity limitations. This means that you cannot copy a single layer DVD onto a dual layer DVD or vice versa. The recordable blanks must be the same format and maximum capacity as the master disc you intend to duplicate.

## System Overview



**Note:** 1 to 11 model shown with HDD

### Front

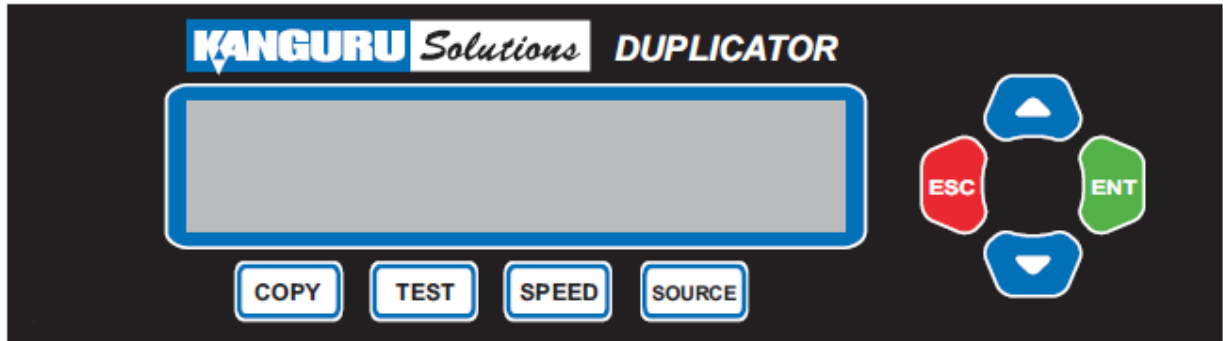
1. Optical Disc Writers (Referred to as “Writer” throughout this manual)
2. LCD Screen
3. Power On/Off Button
4. Optical Disc Reader (Referred to as “Reader” throughout this manual)
5. Eject Button
6. Keypad

### Back

7. Power Supply
8. USB Connection (Network Connection on Network Models)
9. Ventilation Fans
10. Ventilation Vents
11. Hard Drive - hard drive models only
12. Stability Feet - select models only



## LCD Panel



 : Up (Menu/Option Scroll Up)


 : Down (Menu/Option Scroll Down)


 : Enter, Forward, OK, Execute

 : Escape, Back, Cancel

 : Copy process shortcut button

 : Test process shortcut button

 : Change burn speed shortcut button

 : Change source location shortcut button

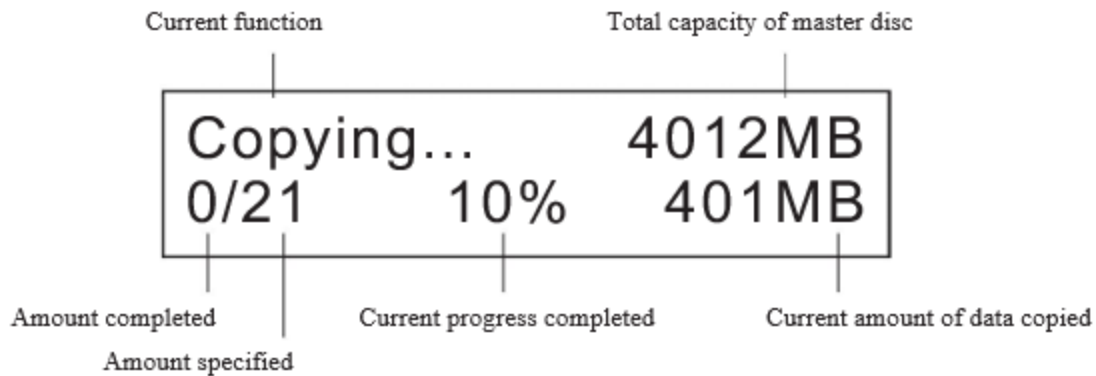
The LCD display allows you to easily navigate and operate the Kanguru Duplicator. After the Kanguru Duplicator boots up, you will see the following screen.



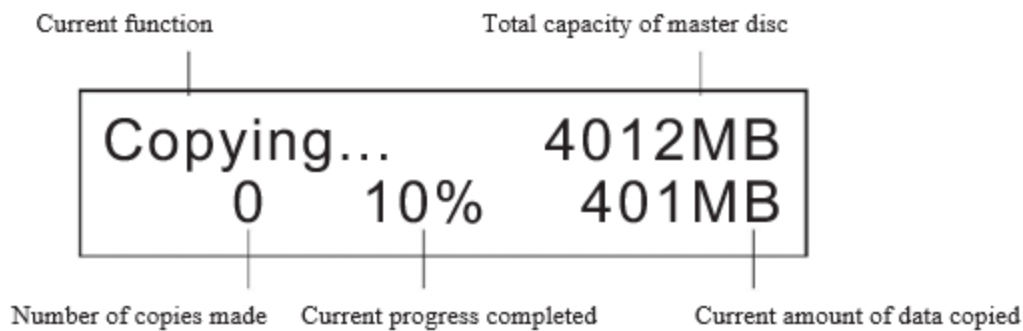
**Note:** When the **Menu level** displays Kanguru Solutions, it means you are currently in the Main menu level.

While the Kanguru Duplicator is executing certain functions (i.e., Copy, Compare, Copy & Compare, Test, Test & Copy, Edit Audio Tracks, Erase) the LCD will display the operating screen. One of two screens will be displayed depending on whether or not you specified a Counter.

**Specify Counter** - If you specified a Counter.



**No Counter** - If you did not specify a Counter.



## Compatible Media

The DVD-R/RW drives read and write several CD and DVD Recordable formats including CD-R, CD-RW, DVD-RW, and DVD-R which offer up to 4.7GB of storage capacity on a single sided DVD disc. The drives write to DVD-R/RW and DVD+/R/RW GENERAL PURPOSE media. It will not write to DVD-R Authoring media.

### **Kanguru Solutions recommends the following brands of DVD media:**

- √ DVD+R Verbatim/Mitsubishi Chemical, Taiyo Yuden, Ricoh, Philips
- √ DVD+RW Verbatim/Mitsubishi Chemical, Ricoh, Philips
- √ DVD-R Verbatim/Mitsubishi Chemical, Taiyo Yuden, Maxell, TDK, Philips
- √ DVD-RW Verbatim/Mitsubishi Chemical, TDK, Philips
- √ CD-R (74 min or 80 min) 40X Verbatim/Mitsubishi Chemical, Taiyo Yuden, Maxell, Philips
- √ CD-R 4-32X Verbatim/Mitsubishi Chemical, Taiyo Yuden, Ricoh, Maxell, Philips
- √ CD-RW (74 min) 24X Verbatim/Mitsubishi Chemical, Philips
- √ CD-RW 4X-10X Verbatim/Mitsubishi Chemical, Ricoh, Philips

Please note that even among the media manufacturers listed above, some media may exist that is not compatible.

Kanguru Duplicator models with Blu-ray support can read and write BD-R and BD-RE formats which offer up to 25GB of storage capacity on a single sided BD disc and record at speeds of up to 6x.

**Kanguru recommends using either Sony, Philips, Panasonic or LG brands of BD media.**

**Note:** It is advised to use the same brand/type media when performing a Copy process. Do not mix and match brands or formats of media during a Copy run.

## General Operations

This section will go over some basic operations that can be applied to more than one function.

## Entering Names and Numbers

Some functions will require you to enter a name or a number.

To enter an alphanumeric character:

1. Press the UP or DOWN button to scroll through the numbers or letters.
2. Press the ENT button to move the cursor position on space to the right or use the ESC button to move the cursor one position to the left.
3. Once you've finished entering the name or number, move the cursor to OK and then press the ENT button.

**Note:** When you enter a number, you must enter 4 digits. If you wish to enter a number that is less than 4 digits, fill the leading spaces with 0's (i.e. 0134 = one hundred and thirty four, 0010 = ten).

## Setting a Job Counter

The Job Counter feature allows you to set a total value for the current job. For example, you can choose the total number of copies you want to make for a copy session. The system will prompt you when the specified number has been reached.

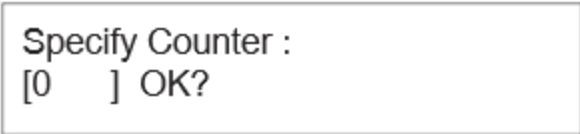
If you want to set a specific value for the Job Counter:

1. When prompted, press the UP or DOWN button to navigate to **Specify Counter**.



Counter :  
Specify Counter

2. Press the ENT button to enter the **Specify Counter** screen.



Specify Counter :  
[0 ] OK?

3. Enter the number of copies you want to create and then navigate to OK. (For more information on entering numbers, please see above section "Entering Names and Numbers"). Press the ENT button to confirm the total number of copies for this job.

You can choose not to specify a total number of copies if you prefer to copy continuously with no interruption. (It will still count the number of copies you've made, but it will not notify you when to stop.) To do so, press the UP or DOWN button to navigate to No Counter and then press the ENT button.

## Shortcut Buttons

There are 4 shortcut buttons (COPY, TEST, SPEED, SOURCE) that can be found on the LCD Panel. These shortcut buttons allow you to quickly access the Duplicator's most commonly used functions.

Note: The shortcut buttons can only be accessed while the Duplicator is in the Main Menu level. The shortcut buttons will not respond while the Duplicator is in the Setup Menu or Advanced Setup Menu.

**COPY** : Press the Copy shortcut button to enter the Auto Copy function. (For more information on the Auto Copy function, please see section "Auto Copy").

**TEST** : Press the Test shortcut button to enter the Test function. (For more information on the Test function, please see section "Test").

**SPEED** : Press the Speed shortcut button to enter the Select Burn Speed function. (For more information on the Select Burn Speed function, please see section "Select Burn Speed").

**SOURCE** : Press the Source shortcut button to enter the Select Source function. (For more information on the Select Source function, please see section "Select Source").

Turn on the Kanguru Duplicator by pressing the Power On button. Wait for a moment to allow the system to boot up. Once the system has booted up, press the UP and DOWN button to navigate the Main Menu.

## Copy

The Copy process will copy your master disc onto a single or multiple blank discs simultaneously. Due to its simultaneous nature, a master disc in good condition and lower recording speeds are recommended for better quality duplications.

Kanguru Solutions  
1. Copy

1. From the Main Menu, press the UP or DOWN button to navigate to Copy. Press the ENT button to enter the **Copy menu**.

Counter :  
No Counter

2. You will see the **Counter** screen. For more information on the Counter, see section "General Operation -> Setting a Job Counter".

Once you have set the Counter, any trays that do not contain discs in them will automatically be ejected. You will see the following **Preparation** screens:

Preparing...  
Waiting for Master

Preparing...  
Waiting for Blanks

3. Insert your Master disc into the Reader drive and blank discs into the Writer drives.

**Note:** For a disc-to-disc copy, the master disc can be inserted in any of the disc drives. The Reader is normally the 1st drive at the top of the tower. You can switch which drive is used as the Reader by changing the Select Source setting. For more information, see section "Select Source".

After you've loaded the drives with discs, close the trays and allow 5 - 10 seconds for the system to detect them. If either of the preparation screens are displayed for more than 2 minutes after you have inserted your discs, please check the quality of the discs.

Once all the discs have been recognized, you will see the **Confirmation** screen.

Preparing :  
7 Discs Detected : Go?

**Note:** The "7" indicates that there are seven discs recognized by the Writers. The actual quantity may be different depending on the number of discs you have inserted.

4. When the number of discs detected matches the number of blank discs you inserted, press the ENT button. You will see the Preparing screen.

Preparing...  
Please Wait

After 2 or 3 seconds of processing time, the **Copy Progress** screen will appear.

Copying...	4012MB
0            10%	401MB

**Note:** It is normal to see the progress indicator stay at 0-10% and 100% for approximately 30 seconds to one minute for duplication. That is caused by the initializing and finalizing stages.

5. Once the Copy process has been completed, you will see the following screen.

Pass 7    Fail 0	( 7 )
Waiting for Blanks	

- √ **PASS 7** - number of discs successfully copied.
- √ **FAIL 0** - number of discs that failed to copy.
- √ **( 7 )** - number of copies made for this job so far.

The successful copies will be ejected. Remove the successful copies, refill the trays with blank media and press the ENT button to continue making another round of copies. Any discs that fail to copy (bad copy) will not be ejected automatically. You will need to manually eject them and throw them away if they are single recording discs. Empty drives will also not be ejected automatically.

6. Terminate the current job.

- a) If you have finished making copies, press the ESC button to terminate the current duplication project and exit to the Main Menu.
- b) If you specified a Counter, once you see the following screen indicating that the specified Counter value has been reached, you can then press the ENT button to exit to the Main Menu.

Pass 21    Fail 0
Job Completed! Press ENT to Finish



## Compare

The Compare function will perform a bit-by-bit comparison between your master disc (or master image on the hard drive) and all the copies. The reason for performing this Compare operation is to ensure that all of your copies contain data identical to the master.

Kanguru Solutions  
2. Compare

1. From the Main Menu, press the UP or DOWN button to navigate to **Compare**. Press the ENT button to enter the Compare menu

Counter :  
No Counter

2. You will see the **Counter** screen. For more information on the Counter, see section “General Operation -> Setting a Job Counter”.

Once you have set the Counter, any trays that do not contain discs in them will automatically be ejected. You will see the following Preparation screens:

Preparing...  
Waiting for Master

Preparing...  
Waiting for Blanks

3. Insert discs into the drives.

After you've loaded the drives with discs, close the trays and allow 5 - 10 seconds for the system to detect them. If either of the preparation screens are displayed for more than 2 minutes after you have inserted your discs, please check the quality of the discs.

Once all the discs have been recognized, you will see the confirmation screen.

Preparing :  
7 Discs Detected : Go?

**Note:** The “7” indicates that there are seven discs recognized by the Writers. The actual quantity may be different depending on the number of discs you have inserted.

Preparing...  
Please Wait

4. When the number of discs detected matches the number of blank discs you inserted, press the ENT button. You will see the Processing screen.

After 2 to 5 seconds of processing time, the Compare Progress screen will appear.

Comparing...	4012MB
0            10%	401MB

Note: It is normal to see the progress indicator stay at 0-10% and 100% for approximately 30 seconds to one minute for duplication. That is caused by the initializing and finalizing stages.

5. Once the Compare process has been completed, you will see the following screen.

Pass 7    Fail 0            ( 7 )
Waiting for Blanks

- √ **PASS 7** - number of discs successfully copied.
- √ **FAIL 0** - number of discs that failed to copy.
- √ **( 7 )** - number of copies made for this job so far.

The successful copies will be ejected. Remove the successful copies, refill the trays with blank media and press the ENT button to continue comparing another round of copies. Any discs that fail to compare will not be ejected automatically. You will need to manually eject them and throw them away if they are single recording discs. Empty drives will also not be ejected automatically.

6. Terminate the current job.

- a) If you have finished making copies, press the ESC button to terminate the current duplication project and exit to the Main Menu.
- b) If you specified a Counter, once you see the following screen indicating that the specified Counter value has been reached, you can then press the ENT button to exit to the Main Menu.

Pass 21    Fail 0
Job Completed! Press ENT to Finish

## Copy & Compare

This Copy & Compare function combines the Copy function and the Compare function. When selected a Copy process will begin, and after the Copy process has completed a Compare process is automatically run in order to ensure that the data copied over successfully.

Kanguru Solutions  
3. Copy & Compare

1. From the Main Menu, press the UP or DOWN button to navigate to **Copy & Compare**. Press the ENT button to enter the Copy & Compare menu.

Counter :  
No Counter

2. You will see the **Counter** screen. For more information on the Counter, see section "General Operation -> Setting a Job Counter"

Once you have set the Counter, any trays that do not contain discs in them will automatically be ejected. You will see the following Preparation screens:

Preparing...  
Waiting for Master

Preparing...  
Waiting for Blanks

3. Insert discs into the drives.

After you've loaded the drives with discs, close the trays and allow 5 - 10 seconds for the system to detect them. If either of the preparation screens are displayed for more than 2 minutes after you have inserted your discs, please check the quality of the discs.

Once all the discs have been recognized, you will see the Confirmation screen.

Preparing :  
7 Discs Detected : Go?

**Note:** The "7" indicates that there are seven discs recognized by the Writers. The actual quantity may be different depending on the number of discs you have inserted.

Preparing...  
Please Wait

4. When the number of discs detected matches the number of blank discs you inserted, press the ENT button. You will see the Processing screen.

After 2 to 5 seconds of processing time, the Copy Progress screen will appear.

Copying...		4012MB
0	10%	401MB

Note: It is normal to see the progress indicator stay at 0-10% and 100% for approximately 30 seconds to one minute for duplication. That is caused by the initializing and finalizing stages.

Once the Copy process has completed, the Compare process will automatically begin.

Comparing...		4012MB
0	10%	401MB

5. Once the Compare process has completed, you will see the following screen.

Pass 7	Fail 0	( 7 )
Waiting for Blanks		

- √ **PASS 7** - number of discs successfully copied.
- √ **FAIL 0** - number of discs that failed to copy.
- √ **( 7 )** - number of copies made for this job so far.

The successful copies will be ejected. Remove the successful copies, refill the trays with blank media and press the ENT button to continue making another round of copies. Any discs that fail to copy or compare will not be ejected automatically. You will need to manually eject them and throw them away if they are single recording discs. Empty drives will also not be ejected automatically.

6. Terminate the current job.

- a) If you have finished making copies, press the ESC button to terminate the current duplication project and exit to the Main Menu.
- b) If you specified a Counter, once you see the following screen indicating that the specified Counter value has been reached, you can then press the ENT button to exit to the Main Menu.

Pass 21	Fail 0
Job Completed! Press ENT to Finish	

## Test

The Test function will perform a simulation of the copy process. During this simulation process the Duplicator will test that the master source and target discs will produce error-free duplicates. All blank single-write recordable discs (e.g., DVD-R, CD-R) will be reusable after testing. Due to the physical limitation of DVD+R/RW & BD-R/RE recordable format, you cannot perform the Test function on these formats. If you do so, the LCD screen will display error message 211.

**Warning:** If you are using CD-RW/DVD-RW discs as your blank media during the Test process, any content that may have been recorded onto those discs will be permanently erased.

Kanguru Solutions  
4. Test

1. From the Main Menu, press the UP or DOWN button to navigate to **Test**. Press the ENT button to enter the Test menu.

Counter :  
No Counter

2. You will see the **Counter** screen. For more information on the Counter, see section "General Operation -> Setting a Job Counter"

Once you have set the Counter, any trays that do not contain discs in them will automatically be ejected. You will see the following Preparation screens.

Preparing...  
Waiting for Master

Preparing...  
Waiting for Blanks

3. Insert discs into the drives.

After you've loaded the drives with discs, close the trays and allow 5 - 10 seconds for the system to detect them. If either of the preparation screens are displayed for more than 2 minutes after you have inserted your discs, please check the quality of the discs.

Once all the discs have been recognized, you will see the confirmation screen.

Preparing :  
7 Discs Detected : Go?

**Note:** The "7" indicates that there are seven discs recognized by the Writers. The actual quantity may be different depending on the number of discs you have inserted.

Preparing...  
Please Wait

4. When the number of discs detected matches the number of blank discs you inserted, press the ENT button. You will see the Processing screen.

After 2 to 5 seconds of processing time, the Test Progress screen will appear.

Testing...		4012MB
0	10%	401MB

Note: It is normal to see the progress indicator stay at 0-10% and 100% for approximately 30 seconds to one minute for duplication. That is caused by the initializing and finalizing stages.

5. Once the Test process has been completed, you will see the following screen.

Pass 7	Fail 0	( 7 )
Waiting for Blanks		

- √ **PASS 7** - number of discs successfully copied.
- √ **FAIL 0** - number of discs that failed to copy.
- √ **( 7 )** - number of copies made for this job so far.

Discs that passed the test will be ejected. Remove the discs, refill the trays with blank media and press the ENT button to continue testing another round of discs. Any discs that fail the test will not be ejected automatically. You will need to manually eject them and throw them away if they are single recording discs. Empty drives will also not be ejected automatically.

**Note:** If one of the Writer drives consistently produces failures, it may be a sign that the drive is faulty. In this case, please contact Kanguru Technical Support at 508-376-4245.

6. Terminate the current job.

- a) If you have finished making copies, press the ESC button to terminate the current duplication project and exit to the Main Menu.
- b) If you specified a Counter, once you see the following screen indicating that the specified Counter value has been reached, you can then press the ENT button to exit to the Main Menu.

Pass 21	Fail 0
Job Completed! Press ENT to Finish	

## Test & Copy

The Test & Copy function combines the Test function and the Copy function. The Test & Copy function will simulate the testing process and once the discs pass the Test process, the Copy process will begin automatically. If there's an error during the simulation, an error message will be displayed on the screen and the copying process will not be initiated.

Kanguru Solutions  
5. Test & Copy

1. From the Main Menu, press the UP or DOWN button to navigate to Test & Copy. Press the ENT button to enter the Test & Copy menu.

Counter :  
No Counter

2. You will see the **Counter** screen. For more information on the Counter, see section "General Operation -> Setting a Job Counter"

Once you have set the Counter, any trays that do not contain discs in them will automatically be ejected. You will see the following Preparation screens:

Preparing...  
Waiting for Master

Preparing...  
Waiting for Blanks

3. Insert discs into the drives.

After you've loaded the drives with discs, close the trays and allow 5 - 10 seconds for the system to detect them. If either of the preparation screens are displayed for more than 2 minutes after you have inserted your discs, please check the quality of the discs.

Once all the discs have been recognized, you will see the Confirmation screen.

Preparing :  
7 Discs Detected : Go?

**Note:** The "7" indicates that there are seven discs recognized by the Writers. The actual quantity may be different depending on the number of discs you have inserted.

Preparing...  
Please Wait

4. When the number of discs detected matches the number of blank discs you inserted, press the ENT button. You will see the Processing screen.

After 2 to 5 seconds of processing time, the Test Progress screen will appear.

Testing...                      4012MB  
0                      10%                      401MB

**Note:** It is normal to see the progress indicator stay at 0-10% and 100% for approximately 30 seconds to one minute for duplication. That is caused by the initializing and finalizing stages.

Once the Test process has been completed, the Copy process will automatically begin.

Copying...		4012MB
0	10%	401MB

5. Once the Copy process has been completed, you will see the following screen.

Pass 7	Fail 0	( 7 )
Waiting for Blanks		

- √ **PASS 7** - number of discs successfully copied.
- √ **FAIL 0** - number of discs that failed to copy.
- √ **( 7 )** - number of copies made for this job so far.

The successful copies will be ejected. Remove the successful copies, refill the trays with blank media and press the ENT button to continue making another round of copies. Any discs that fail to test or copy will not be ejected automatically. You will need to manually eject them and throw them away if they are single recording discs. Empty drives will also not be ejected automatically.

6. Terminate the current job.

- a) If you have finished making copies, press the ESC button to terminate the current duplication project and exit to the Main Menu.
- b) If you specified a Counter, once you see the following screen indicating that the specified Counter value has been reached, you can then press the ENT button to exit to the Main Menu.

Pass 21	Fail 0
Job Completed! Press ENT to Finish	



## Mix Audio Tracks

The Mix Audio Tracks function will guide you through creating a mixed audio CD that contains various tracks from different audio CDs. You can mix audio tracks directly from audio CDs to blank CDs or if your system came with a hard drive, you can mix audio tracks through the hard drive.

By mixing an audio CD directly to blank CD-R media, all the tracks you selected will be transferred to the blank CD-R media directly track by track. Once you've completed your track selection(s); you will be instructed to finalize your mixed audio CD.

**Note:** Please do this cautiously; if any of the audio CD tracks you wish to mix are not readable due to scratches or poor quality, the blank CD-R media will be ruined.

Kanguru Solutions  
6. Mix Audio Tracks

1. From the Main Menu, press the UP or DOWN button to navigate to Mix Audio Tracks. Press the ENT button to enter the Mix Audio Tracks menu.

Mix Audio Tracks  
Directly to Blank CD

2. You will see the Mix Audio Tracks Options screen. Press the UP or DOWN button to select Directly to Blank CD. Press the ENT button to confirm your selection.

Once the Mix Mode selection is submitted, you will see the PREPARATION screens. Any drive trays that do not contain disc(s) in them will automatically be ejected:

Preparing...  
Waiting for Master

Preparing...  
Waiting for Blanks

3. Insert discs into the drives.

After you've placed an audio CD containing the track(s) you wish to copy into the Reader drive and blank CD-R discs into the Writer drives, please allow 5-10 seconds for the system to detect them. If either one of the above screens is displayed for more than 2 minutes after you have placed your audio CD or blank discs into the drives, please check the disc quality.

After they have been recognized you will see the Track Selection screen:

Total: 0      Trk      0m : 00s  
Track 1 :      4m : 31s

- √ 0 Trk - number of tracks selected so far.
- √ 0m:0s - total minutes and seconds of playtime.
- √ Track 1 :- currently on track 1 of the Audio CD.
- √ 4m:31s - current track's running time.

4. Press the UP or DOWN button to navigate through each track on the audio CD. Press the ENT button to select the track you want to include on your mix.

Total: 0 Trk 0m : 00s  
Track 1 4m : 31s

Once a track is selected, you will see an asterisk symbol (\*) appear to the left of the track number. Press the ENT button again to deselect the track.

Over Blank Disc Capacity  
Press OK to Continue

Note: If the track you have selected will cause the total playtime to exceed your blank CD-R media capacity, you will see an Over Blank Disc Capacity screen. Press the ENT button to return to the track selection menu. The last track selected will be de-selected automatically.

5. Once you have finished selecting the tracks for this Audio CD, press the UP or DOWN button until you see the Are you done? screen. Press the ENT button to confirm your selection.

Total: 6 Trk 26m : 17s  
Are you done?

The Mix process will begin and you will see the Mix Progress screen:

Mixing 1  
10% 04:31

- ✓ 1- the system is currently transferring track 1.
- ✓ 10% - the current track is 10% complete.
- ✓ 04:31 - current track's running time.

6. Once the mixing process is completed, you can choose to either continue adding tracks from another audio CD or finalize the CD:

Total: 6 Trk 26m : 17s  
Insert Next Master?

A - If you want to add tracks from a different audio CD, press the UP or DOWN button to select Insert Next Master. Press the ENT button and the audio CD will automatically be ejected. Insert the next audio CD and repeat steps 4 - 6 to continue adding tracks.

Total: 6 Trk 26m : 17s  
Finish Mixing?

B - If you are finished adding tracks to the list, press the UP or DOWN button to select Finish Mixing. Press the ENT button and you will see the Confirm to Finalize screen. Press the ENT button to confirm that you are ready to finalize the CD.

Finalizing...  
Please Wait

The audio CD will be automatically ejected and you will see the Finalizing screen.

7. Once the Finalizing process is completed, you will see the following screen. You can then press the ENT button and you will exit to the Main Menu. Your Mix Audio CD will be ejected.

## Select Source

This Select Source function will allow you to select which disc drive (or hard drive if you purchased a hard drive model) will be used as the Source/Reader drive for Copy related operations.

**Note:** While in the Main Menu, you can press the SOURCE shortcut button on the LCD panel to directly enter the Select Source menu.

Kanguru Solutions  
7. Select Source

1. From the Main Menu, press the UP or DOWN button to navigate to Select Source. Press the ENT button to enter the Select Source menu.

Drive 1                      Port 0.1

2. The current Source drive's information is displayed on the screen. If you want to use the 1st drive as the source drive, press the UP or DOWN button to select Drive 1 and then press the ENT button to confirm your selection.

Drive 2                      Port 1.0

3. If you want to use one of the other drives as the source drive, press the UP or DOWN button to select a different drive and then press the ENT button to confirm it.

Hard Drive                      Port 0.0

If you purchased a hard drive model, you can select the hard drive as your Source drive. Press the UP or DOWN button to select Hard Drive and then press the ENT button to confirm your selection.

Once the source has been selected, you will be returned to the Main Menu.

**Note:** Press the ESC button to cancel and exit to the Main Menu. The Source drive will remain unchanged.

## Erase

The Erase function allows you to erase RW media. Once erased, the RW disc can be used again as blank media.

You have two options for erasing rewritable discs:

√ Full Erase - Erases all data on the disc, making data impossible to be recovered. Best option if erasing sensitive or confidential data. Full Erase erases all data completely, but takes longer to complete than a Quick Erase.

√ Quick Erase - Erases the index of the rewritable disc only, not the data section. Quick Erase takes less time to complete than Full Erase.

Kanguru Solutions  
8. Erase

1. From the Main Menu, press the UP or DOWN button to navigate to Erase. Press the ENT button to enter the Erase menu.

Erase :  
Quick Erase

2. Press the UP or DOWN button to select Full Erase or Quick Erase and then press the ENT button to confirm your selection.

Counter :  
No Counter

3. You will see the Counter screen.

Preparing :  
Waiting for RW discs

4. Once you have set the Counter, any trays that do not contain discs in them will automatically be ejected. You will see the Preparation screen.

Preparing :  
7 Discs Detected : Go?

5. Insert the rewritable disc into the drive trays. Give the Duplicator 5 - 10 seconds for the system to detect the discs. Once they have been recognized, you will see the confirmation screen. When the number of discs detected matches the number of discs you inserted, press the ENT button to confirm.

6. After 2 or 3 seconds of processing time, one of the following Erase screens will appear depending on whether you selected Quick Erase or Full Erase.

Quick Erasing...

Full Erasing...

7. Once the Erase process has been completed, you will see the following screen.

```
Pass 7   Fail 0   ( 7)
Waiting for Blanks
```

- √ **PASS 7** - number of discs successfully copied.
- √ **FAIL 0** - number of discs that failed to copy.
- √ **( 7)** - number of copies made for this job so far.

The successfully erased discs will be ejected. Remove the successfully erased discs, refill the trays with rewritable media and press the ENT button to continue erasing another round of discs. Any discs that fail to erase will not be ejected automatically. You will need to manually eject them. Empty drives will also not be ejected automatically.

8. Terminate the current job.

- a) If you have finished making copies, press the ESC button to terminate the current duplication project and exit to the Main Menu.
- b) If you specified a Counter, once you see the following screen indicating that the specified Counter value has been reached, you can then press the ENT button to exit to the Main Menu.

```
Pass 21   Fail 0
Job Completed! Press ENT to Finish
```

## Job Counter

The Job Counter setting allows you to configure whether or not the system will allow you to set a job counter for each job. You can turn the Job Counter On or Off. The default setting is On.

Kanguru Solutions  
9. Job Counter

1. From the Main Menu, press the UP or DOWN button to navigate to **Job Counter**. Press the **ENT** button to enter the Job Counter menu.

Job Counter :  
On

2. Press the UP or DOWN button to select On or Off. Press the **ENT** button to confirm the selection. You will be returned to the Main Menu.

## Auto Copy

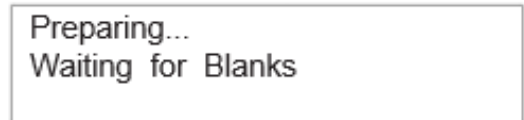
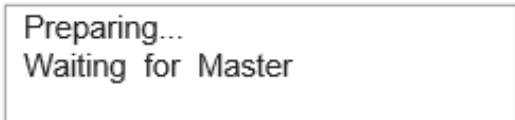
This Auto Copy function allows the system to operate the disc-to-disc copy function without any user inputs for ease of operation.

**Note:** While in the Main Menu, you can press the COPY shortcut button on the LCD panel to directly enter the Copy menu.



1. From the Main Menu, press the UP or DOWN button to navigate to Auto Copy. Press the ENT button to begin the Auto Copy process.

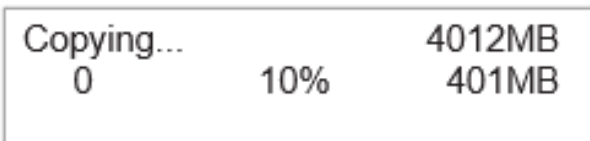
Any trays that do not contain discs in them will automatically be ejected. You will see the following Preparation screens:



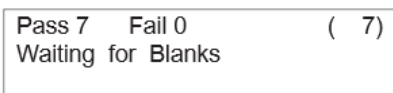
2. Insert discs into the drives.

After you've loaded the drives with discs, close the trays and allow 5 - 10 seconds for the system to detect them. If either of the preparation screens are displayed for more than 2 minutes after you have inserted your discs, please check the quality of the discs.

Once the system detects that all the Writer drives are filled with blank media the duplication process will begin automatically. After 2 or 3 seconds of processing time, the Copy Progress screen will appear.



3. Once the Copy process has been completed, you will see the following screen.



- √ **PASS 7** - number of discs successfully copied.
- √ **FAIL 0** - number of discs that failed to copy.
- √ **( 7 )** - number of copies made for this job so far.

The successful copies will be ejected. Remove the successful copies, refill the trays with blank media. Once the system detects that all the trays are full with blank media, it will automatically continue making another round of copies. Any discs that fail to copy (bad copy) will not be ejected automatically. You will need to manually eject them and throw them away if they are single recording discs. Empty drives will also not be ejected automatically.



4. If you have finished making copies, press the ESC button to terminate the current duplication project and exit to the Main Menu.

## External Connection

The External Connection setting allows you to turn the USB port (or Ethernet port on Network models) on the back of the Kanguru Duplicator On or Off. When turned On, the system can be connected to a computer. If your Duplicator came with a hard drive, you will be able to access the Duplicator's hard drive from your computer. If your Duplicator did not come with a hard drive, you will be able to access one of the Writer drives using the computer. The default setting is Off.

**Warning:** If your Duplicator came with a hard drive, do not try to access the hard drive through your computer before installing Kanguru Media Manager. The Duplicator's hard drive comes formatted in a special file system that will not be recognized until Kanguru Media Manager is installed.

1. Connect the Kanguru Duplicator to your PC using the USB cable provided.

Kanguru Solutions  
12. External Connection

2. From the Main Menu, press the UP or DOWN button to navigate to USB Connection. Press the ENT button to enter the USB Connection menu.

USB Connection :  
On

3. Press the UP or DOWN button to select On or Off. Press the ENT button to confirm your selection.

Process Complete !  
Please Restart

4. If you changed the USB Connection setting, after 3 - 5 seconds you will see the Restart screen. You must restart your Duplicator at this time.

Note: The Duplicator must be restarted after this setting is changed in order to take effect.

5. When the system boots back up, your computer should recognize a DVD drive or Hard drive, depending on the model you purchased.


Note: While USB Connection is turned On, the drive that is being enabled for USB functionality will be disabled on the Duplicator.

1 to 1 Duplicator users: When you turn USB Connection on, your Duplicator will display a "No Writers Enabled" error message when you reboot your system. Turn USB Connection off in order to get rid of this message.

# Setup Menu

# 3

The Setup Menu contains settings that will allow you to modify how the Kanguru Duplicator operates. The original settings are already configured for optimal performance, and typically do not need to be changed.



Kanguru Solutions  
10. Setup

From the Main Menu, press the UP or DOWN button to navigate to Setup. Press the ENT button to enter the Setup Menu. Once in the Setup Menu, press the ESC button at any time to exit to the Main Menu.

## Select Burn Speed

The Select Burn Speed setting allows you to adjust the duplication speed for various duplication job types. The Burn Speed is set to Max (the optimal speed for each format) by default. However, if your master or blank discs are of poor quality, you may want to reduce the duplication speed to reduce failure rate and improve the duplication quality.

Note: While in the Main Menu, you can press the SPEED shortcut button on the LCD panel to directly enter the Select Burn Speed menu.

Setup  
1. Select Burn Speed

1. From the Setup Menu, press the UP or DOWN button to navigate to Select Burn Speed. Press the ENT button to enter the Select Burn Speed menu.

Select Burn Speed  
CD to CD Speed

2. Press the UP or DOWN button to select a source-to-disc format burn speed. Press the ENT button to confirm your selection.

Note: If you purchased a hard drive model, you will also have the option to select the hard drive-to-disc format burn speed.

CD to CD Speed  
Max

3. Press the UP or DOWN button to select the desired speed value. If you select Max the system will always burn at the highest possible recording speed. Press the ENT button to confirm your selection. You will return to the Select Burn Speed menu.

Note: If the speed value you've selected is the same as the current speed value, the system will NOT respond to the ENT button. You will have to press the ESC button to return to the Select Burn Speed menu.

Select Burn Speed  
Setting Saved!

4. Press the ESC button to exit back to the Setup Menu. If you adjusted a recording speed you will see the Setting Saved screen for 2 seconds, and then you will exit to the Setup Menu.

## Duplication Mode (hard drive models only)

The Duplication Mode setting is for Kanguru Duplicator systems with a hard drive installed. If you purchased a Kanguru Duplicator with a hard drive installed, the Duplication Mode setting allows you to select how you want to make disc to disc duplications.

There are three duplication modes:

- √ **Load and Copy** - Allows faster duplication from the hard drive by simultaneously copying to the blank media in the writer drives while loading an image of the master disc to the hard drive. Starting from the 2nd round of duplications, all subsequent copies will be created using the master image loaded onto the hard drive as the copy source. The image will be loaded onto the RES.VEF partition. If there is already an image on the RES.VEF partition then this will copy over the existing image.
- √ **On the Fly (default)** - Instructs the system to copy directly from the master disc. When using On the Fly mode, no information is stored on the hard drive.
- √ **Prompt** – The system will ask you to select the Duplication Mode prior to performing a copy process.

Note: If your system did not come with a hard drive installed, you will be able to enter the Duplication Mode menu, but you will only be able to select On the Fly.

Setup  
2. Duplication Mode

1. From the Setup Menu, press the UP or DOWN button to navigate to Duplication Mode. Press the ENT button to enter the Duplication Mode menu.

Duplication Mode  
On The Fly

2. Press the UP or DOWN button to select a Duplication Mode. Press the ENT button to confirm your selection. You will exit to the Setup Menu.

## Auto Quick Compare

The Auto Quick Compare setting makes the compare process much faster by comparing partial data instead of entire disc content. This setting is Off by default.

Setup

3. Auto Quick Compare

1. From the Setup Menu, press the UP or DOWN button to navigate to Auto Quick Compare. Press the ENT button to enter the Auto Quick Compare menu.

Auto Quick Compare:  
Off

2. Press the UP or DOWN button to select the Auto Quick Compare mode. Press the ENT button to confirm your selection. You will exit to the Setup Menu.

## Auto Start

The Auto Start setting allows you to choose if the duplicator should start any function that is currently selected when any media is detected, all drives contain media, or turn off completely. This feature applies to applications inside the operation menu such as COPY, COMPARE, COPY & COMPARE, TEST, TEST & COPY, and ERASE.

- √ Auto - this feature automatically starts the duplication process when all writer drives detect recordable media inside, or waits for 30 seconds before starting the duplication process if there is at least one recordable disc in a writer drive and any of the remaining writer drives are empty.
- √ Full - selected, this feature allows the system to copy automatically once your master disc and all of the writer trays of the system are filled with recordable media, but will not start automatically if any writer drives remain empty.
- √ Off - the copy process requires you to press the “ENT”/Enter button to start the duplication.

Setup  
4. Auto Start

1. From the Setup Menu, press the UP or DOWN button to navigate to Auto Start. Press the ENT button to enter the Auto Start menu.

Auto Start:  
Auto - 30s

2. Press the UP or DOWN button to select the Auto Start mode. Press the ENT button to confirm your selection. You will exit to the Setup Menu.

## Language

The Language setting allows you select which language your system displays. The available languages are: English, Spanish, Japanese, French, Italian, Portuguese, German, Catalan and Swedish. The default language is English.

Setup  
5. Language

1. From the Setup Menu, press the UP or DOWN button to navigate to Language. Press the ENT button to enter the Language menu.

Language  
English

2. Press the UP or DOWN button to select a language. Press the ENT button to confirm your selection. You will exit to the Setup Menu.



## Read Error Skip

The Read Error Skip setting allows you to enable the system to skip any read errors it encounters during a Copy process. Normally when the system encounters a read error while reading the master disc, the duplication job will be aborted and all the recordable media will fail (bad copy). If you believe that your master disc has a small, insignificant error due to physical damages; you can turn Read Error Skip to On. The default setting is Off with Retry.

There are three options for the Read Error Skip function:

- √ Off - The system will not continue duplicating when it reads a disc error on the master disc.
- √ Off with Retry - The system will attempt to retry duplication if it encounters a read error on the master disc. If it still cannot duplicate then the copy process will be aborted.
- √ On - The system will skip 64KB of data and continue with the duplication process. A maximum total of 9,600KB is allowed to be skipped over.
- √ Turbo Mode - The system will skip 64KB of data and continue with the duplication process. A maximum total of 65,500KB is allowed to be skipped over.

Note: Turning on Read Error Skip will not fix the error on the master disk, it will only skip it to make the rest of the data readable if possible.

Setup  
6. Read Error Skip

1. From the Setup Menu, press the UP or DOWN button to navigate to Read Error Skip. Press the ENT button to enter the Read Error Skip menu.

Read Error Skip:  
Off with Retry

2. Press the UP or DOWN button to select the Read Error Skip mode. Press the ENT button to confirm your selection. You will exit to the Setup Menu.

## Writing Method

The Writing Mode setting allows you to select the writing method. The default setting is Disc at once.

There are two Writing Mode settings:

- √ Disc at Once - all tracks are recorded without the laser ever stopping, and the disc is closed. It is strongly advised to leave this setting as Disc at Once.
- √ Track at Once - Each time a track is finished, the recording laser is stopped, and two run-out blocks are written. When the laser starts writing another track, one link block and four run-in blocks are written.

Setup  
7. Writing Mode

1. From the Setup Menu, press the UP or DOWN button to navigate to Writing Mode. Press the ENT button to enter the Writing Mode menu.

Writing Mode  
Disc at Once

2. Press the UP or DOWN button to select the Writing Mode. Press the ENT button to confirm your selection. You will exit to the Setup Menu.

## Max Audio, VCD & CDG Speed

The Max Audio, VCD & CDG Speed setting allows you to adjust the maximum duplication speed for Audio and Video CDs. Audio CDs and video CDs do not have internal error checking capability, so duplicating at too high of a speed may cause frequent errors.

You can set the Max Audio, VCD & CDG setting to 1x, 2x, 4x, 8x, 10x, 12x, 16x, 24x, 32x, 40x, 48x, 52x and Max. When set to Max, audio and video CDs will be burned at the highest speed possible. The default setting is 16x.

Setup  
8. Max Audio, VCD & CDG

1. From the Setup Menu, press the UP or DOWN button to navigate to Max Audio, VCD & CDG Speed. Press the ENT button to enter the Max Audio, VCD & CDG Speed menu.

Max Audio, VCD & CDG  
16x

2. Press the UP or DOWN button to select the desired burn speed. Press the ENT button to confirm your selection. You will exit to the Setup Menu.

Note: If the speed value you've selected is the same as the current speed value, the system will NOT respond to the ENT button. You will have to press the ESC button to return to the Max Audio, VCD & CDG menu.

## Button Sound

The Button Sound setting allows you to choose whether or not you hear an audible beep signal when a button is pressed or when a task has been completed. You can turn the Button Sound setting On or Off. The default setting is On.

Setup  
9. Button Sound

1. From the Setup Menu, press the UP or DOWN button to navigate to Button Sound. Press the ENT button to enter the Button Sound menu.

Button Sound  
On

2. Press the UP or DOWN button to select On or Off. Press the ENT button to confirm your selection. You will return to the Setup Menu.

## Startup Menu Item

The Startup Menu Item setting allows you to choose which menu you would like to see first when you turn on the system. You can select Copy, Compare, Copy & Compare, Test, Test & Copy or Auto Copy to be the Startup Menu Item. The default Startup Menu Item is Copy.

Setup  
10.Startup Menu Item

1. From the Setup Menu, press the UP or DOWN button to navigate to Startup Menu Item. Press the ENT button to enter the Startup Menu Item menu.

Startup Menu Item  
Copy

2. Press the UP or DOWN button to select a Startup Menu Item. Press the ENT button to confirm your selection. You will exit to the Setup Menu.

## DVD+R High Compatibility Mode

The DVD+R High Compatibility Mode setting allows you to turn the DVD+R Compatibility Mode function On or Off. Turning this function On increases the compatibility of DVD+R media with a broader range of DVD players. The default setting is On.

Note: Enabling this function will increase the amount of time required to create duplicates.

Setup  
11. DVD+R High Compatibility Mode

1. From the Setup Menu, press the UP or DOWN button to navigate to DVD+R High Compatibility Mode. Press the ENT button to enter the DVD+R High Compatibility Mode menu.

DVD+R High Compatibility Mode  
On

2. Press the UP or DOWN button to select On or Off. Press the ENT button to confirm your selection. You will exit to the Setup Menu.

## ISRC

The ISRC setting allows you to turn the ISRC function On or Off. Turning On ISRC allows the system to copy the ISRC information from an audio CD. ISRC (International Standard Recording Code) is the serial number for audio tracks that uniquely identifies a music recording. This ISRC code is common in commercial audio CDs and is rarely seen on homemade audio CDs. The default setting is Off.

Note: Enabling the ISRC function will lower the duplication performance.

Setup  
12. ISRC

1. From the Setup Menu, press the UP or DOWN button to navigate to ISRC. Press the ENT button to enter the ISRC menu.

ISRC :  
Off

2. Press the UP or DOWN button to select On or Off. Press the ENT button to confirm your selection. You will exit to the Setup Menu.

## Disable Drives

The Disable Drives setting allows you to disable a specific Writer drive. This is useful when a drive is producing copies with a high rate of failure or if a drive is not functioning properly. By default, all writer drives are Enabled.

```
Setup
13. Disable Drives
```

1. From the Setup Menu, press the UP or DOWN button to navigate to Disable Drives. Press the ENT button to enter the Disable Drives menu.

```
Drive 1          Port 1.0
[*] Enable [ ] Disable
```

2. Press the UP or DOWN button to select a Writer drive. The Writers drives are ordered from the top to bottom (i.e. top most Writer is Drive 1, the Writer below is Drive 2, etc..) Press the ENT button to disable the selected drive or press the ESC button to enable the selected drive.

```
Save Changes?
OK?
```

3. When you have finished enabling/disabling the Writer drives, press the UP or Down button until you see the Save Change screen.

```
Setting Saved
Please Restart!
```

4. Press the ENT button to save the changes. After 2 - 3 seconds the system will prompt you to restart. These changes will not take effect until you restart the system. Press any button to exit to the Setup Menu.



## Overburn

Overburn is the process of recording data past the normal size limit. Many disc manufacturers extend the recordable area on a disc, leaving a small margin of extra recordable area along the outer edge. The Overburn setting allows you to turn On or Off the ability to burn to the overburn area on a disc. The default setting is Off.

**WARNING! Turning the Overburn setting to On may cause damage to your discs or Writer drives during the burn process.**

Setup  
14. Overburn

1. From the Setup Menu, press the UP or DOWN button to navigate to Overburn. Press the ENT button to enter the Overburn menu.

Overburn :  
Off

2. Press the UP or DOWN button to select On or Off. Press the ENT button to confirm your selection. You will exit to the Setup Menu.

## Select Loading Drive (hard drive models only)

The Select Loading Drive setting allows you to choose which disc drive you want to use as the Loading drive. The Loading drive is the drive used to load an image from a source DVD/CD/BD to a partition on the hard drive.

Setup  
15. Select Loading Drive

1. From the Setup Menu, press the UP or DOWN button to navigate to Select Loading Drive. Press the ENT button to enter the Select Loading Drive menu.

Drive 1                      Port 0

2. Press the UP or DOWN button to select a disc drive. Press the ENT button to confirm the selected drive.

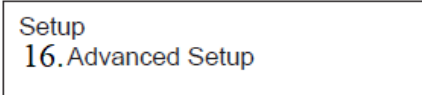
Drive 1                      Port 0  
Selected!

3. After you have confirmed the Loading drive, you will see the Selected screen before returning to the Setup Menu.

Note: If you press the ENT button and are returned to the Setup Menu without seeing the Selected screen, it means that the drive was already selected as the Loading drive.

## Advanced Setup

The Advanced Setup menu contains advanced settings that allow you to view and modify how the Kanguru Duplicator operates. The original settings are already configured for optimal performance and typically do not need to be changed.



Setup  
16. Advanced Setup

From the Setup Menu, press the UP or DOWN button to navigate to Advanced Setup. Press the ENT button to enter the Advanced Setup menu. Once in the Advanced Setup menu, press the ESC button at any time to exit to the Setup Menu.

## Disc Info

The Disc Info function allows you to view and identify the information encoded within your media. The Disc Info function provides you with information about a disc's format, capacity, manufacturer ID as well as the media's writing speed. This information is useful when troubleshooting with a technician.

Note: Limited information will be displayed for media in a Reader drive.

Advanced Setup  
1. Disc Info

1. From the Advanced Setup menu, press the UP or DOWN button to navigate to Disc Info. Press the ENT button to enter the Disc Info menu.

Disc Info  
Please Insert Disc

2. The system will prompt you to insert your discs. Insert your media into the drives.

3. Allow the system 5 - 10 seconds to recognize the discs. When the discs have been recognized, the screen will display information regarding the inserted disc.

1. DVD - R   Blank   0MB

- √ 1. - The drive the disc is occupying.
- √ DVD-R - Type of media format.
- √ Blank - The media's status.
- √ 0MB - Total amount of data on the disc.

4. Press the ENT button to view more information.

1. Blank   Cap: 4490MB  
Speed: 16x, 12x, 8x, 4x


- √ 1. - The drive the disc is occupying.
- √ Blank - The media's status.
- √ Cap: - The disc's capacity.
- √ Speed: - The disc's burn speeds.

5. Press the UP or DOWN button to view information about the next disc.

6. When you have finished, press the ESC button to exit to the Advanced Setup menu. The trays containing discs will automatically be ejected.

## System Info

The System Info function allows you to view information pertaining to your Kanguru Duplicator system. This information is useful when troubleshooting with a technician.



Advanced Setup  
2. System Info


1. From the Advanced Setup Menu, press the UP or DOWN button to navigate to System Info. Press the ENT button to enter the System Info menu.

2. Press the UP or DOWN button to view more information about your system.

3. Press the ESC button to exit and return to the Advanced Setup menu.

## Device Info

The Device Info function allows you to view information pertaining to the devices built into your system, such as the disc drives or a hard drive. This information includes but is not limited to the device's manufacturer, model number, etc. This information is useful when troubleshooting with a technician.



Advanced Setup  
3. Device Info

1. From the Advanced Setup menu, press the UP or DOWN button to navigate to Device Info. Press the ENT button to enter the Device Info menu.
2. The screen will display information pertaining to one of the devices built into your system. Press the ENT button to view more information about the selected device.
3. Press the UP or DOWN button to select a different device.
4. Press the ESC button to exit to the Advanced Setup menu.

## Load Defaults

The Load Defaults function will allow you to reset all of the system's settings back to the original, factory default settings. You can perform this function if your system is acting abnormally.

Advanced Setup  
4. Load Defaults

1. From the Advanced Setup menu, press the UP or DOWN button to navigate to Load Defaults. Press the ENT button to enter the Load Defaults menu.

Load Defaults  
Press ENT to Continue

2. The system will prompt you to confirm whether you want to reset the system to the default settings. Press the ENT button to confirm. Press any other button to exit to the Advanced Setup menu.

After 3 - 5 seconds, you will be returned to the Advanced Setup menu and all system settings will be reset to the default settings.

## Boot Password

A Bootup Password can be created in order to prevent unauthorized users from operating the Duplicator. The Bootup Password function allows you to create, modify or delete a Bootup Password. By default, there is no Bootup Password set. If you forgot your Bootup Password, please contact Kanguru Solutions Technical Support at [support@kanguru.zendesk.com](mailto:support@kanguru.zendesk.com).



## Creating a Bootup Password

Advanced Setup  
5. Bootup Password

1. From the Advanced Setup menu, press the UP or DOWN button to navigate to Bootup Password. Press the ENT button to enter the Bootup Password menu.

Bootup Password  
1. Create Password

2. Press the UP or DOWN button to select Create Password. Press the ENT button to enter the Create Password menu.

Create Password  
[ 0000 ] OK?

3. Enter a four-digit password.

Create Password  
Setting Saved!

4. Press the ENT button to confirm your password. The Setting Saved screen will appear and you will be returned to the Bootup Password menu.

Enter PWD (Admin)  
[     ] OK?

The next time the system boots up, the screen will display the Enter PWD screen. You will have to enter the correct Bootup Password before you are allowed to operate the Duplicator.

## Changing the Bootup Password

Advanced Setup  
5. Bootup Password

1. From the Advanced Setup menu, press the UP or DOWN button to navigate to Bootup Password. Press the ENT button to enter the Bootup Password menu.

Bootup Password  
2. Change Password

2. Press the UP or DOWN button to select Change Password. Press the ENT button to enter the Change Password menu.

Password Not Exist!  
Press ENT to Continue

Note: If you have not created a password yet, you will see a Password Not Exist screen. Press the ENT button to return to the Bootup Password menu.

Change Password  
[ 0000 ] OK?

3. Enter a new four digit password.

Change Password  
Setting Saved!

4. Press the ENT button to confirm your new password. The Setting Saved screen will appear and you will be returned to the Bootup Password menu.

## Removing the Bootup Password

Advanced Setup  
5. Bootup Password

1. From the Advanced Setup menu, press the UP or DOWN button to navigate to Bootup Password. Press the ENT button to enter the Bootup Password menu.

Bootup Password  
3. Remove Password

2. Press the UP or DOWN button to select Remove Password. Press the ENT button to enter the Remove Password menu.

Password Not Exist!  
Press ENT to Continue

Note: If you have not created a password yet, you will see the Password Not Exist screen. Press the ENT button to return to the Bootup Password menu.

Remove Password  
Please Confirm?

3. You will see the Remove Password Confirmation screen. Press the ENT button to confirm. Press any other button to Cancel.

Remove Password  
Deleted!

4. Once you have confirmed, you will see the Deleted screen. After 2 - 3 seconds you will be returned to the Bootup Password menu.

## System Counter (hard drive models only)

The System Counter function keeps a record of the number of Copy operations were performed, how many passed, how many failed as well as the total operating time for CDs, DVDs and BDs (BDs for Blu-ray models only).

Advanced Setup  
6. System Counter

1. From the Advanced Setup menu level, use the UP or Down button to navigate to System Counter. Press the ENT button to enter the System Counter menu.

Total Mileage of DVD  
PASS : 21    FAIL : 0

The screen will display the total mileage of the DVD drives, including the number of successful copies (PASS) and unsuccessful copies (FAIL) created by the drive.

Total Mileage of CD  
PASS : 21    FAIL : 0

2. Press the ENT button to proceed to view information on the CD drives. Press the ENT button again to view information on the BD drives (if you did not purchase a Blu-ray model, this will always display 0's for PASS and FAIL).

Total Usage Time  
1H 45M

3. Press the ENT button again to view the Total Usage Time screen. This will display the total number of hours and minutes the drives have been operating for. You can view the total usage time for individual drives by pressing the UP or DOWN button.

4. Press the ESC button to exit to the Advanced Setup menu.

## Update Firmware

The Update Firmware function will allow you to update your system's firmware version. Firmware updates can be located on the Kanguru Support site at <https://kanguru.zendesk.com/hc/en-us/articles/115003325212-Bluray-DVD-CD-Duplicator>.

To perform this update, you will need the following:

- 1 blank Blu-Ray/CD/ DVD
- Kanguru Blu-ray/DVD Duplicator
- Firmware

To update your duplicator please do the following:

1. Please unzip the file sent to you and move the files to a Blu-Ray/CD/ DVD
2. Place the Blu-Ray/CD/ DVD in the source tray on the duplicator.
3. Navigate through the menu till you see Setup Menu and press ENT.
4. Once you are in Setup Mode, use the up and down arrows to navigate to Advanced Setup Menu.
5. Select Advanced Setup and in here look for Update Firmware then press ENT. Once this is completed you will need to restart your duplicator

# Duplicators with Internal Hard Drives

# 4

Duplicators that contain internal hard drives have more options available to them as these devices have the ability to store images in form of ISO files for later use. As such there are additional settings options available to them as well option computer software available to load images from your computer the internal drive. Please note that a duplicator with an internal hard drive cannot have one of the burners connected to the computer when External Connection is enabled. Instead only the internal drive itself will connect to your computer.

## Mix Audio Tracks Using Hard Drive

By mixing an audio CD through the hard drive, all the tracks you select from the audio CD will be transferred to the hard drive. Once you've completed your track selection, you will be instructed to copy them onto blank CD-R media.

Mixing through the hard drive is considered a safer method for creating mixed audio tracks compared to mixing directly to CD. If any of the audio CD tracks you wish to mix are not readable due to scratches or bad quality, the blank CD-R media will NOT be ruined since the blank CD-R media isn't being recorded on until all audio CD tracks are successfully transferred to the hard drive.

Kanguru Solutions  
6. Mix Audio Tracks

1. From the Main Menu, press the UP or DOWN button to navigate to Mix Audio Tracks. Press the ENT button to enter the Mix Audio Tracks menu.

Mix Audio Tracks  
Through Hard Drive

2. You will see the Mix Audio Tracks Options menu. Press the UP or DOWN button to select Through Hard Drive. Press the ENT button to confirm your selection.

Preparing...  
Waiting for Master

Once the Mix Mode selection is submitted, you will see the Preparation screens. The master disc drive tray will automatically be ejected.

3. Insert an audio CD into the Reader drive.

After you've placed an audio CD containing the track(s) you wish to copy, please allow 5-10 seconds for the system to detect it. If the Preparation screen is displayed for more than 2 minutes after you have placed your audio CD into the drive, please check the disc quality.

After it has been recognized you will see the Track Selection screen:

Total: 0      Trk      0m : 00s  
Track 1 :      4m : 31s

- √ 0 Trk - number of tracks selected so far.
- √ 0m:0s - total minutes and seconds of playtime.
- √ Track 1 :- currently on track 1 of the Audio CD.
- √ 4m:31s - current track's running time.

4. Press the UP or DOWN button to navigate through each track on the audio CD. Press the ENT button to select the track you want to include on your mix.

Total: 0      Trk      0m : 00s  
Track 1      4m : 31s

Once a track is selected, you will see an asterisk symbol (\*) appear to the left of the track number. Press the ENT button again to deselect the track.

Over Blank Disc Capacity  
Press OK to Continue

Note: If the track you have selected will cause the total playtime to exceed your blank CD-R media capacity, you will see an Over Blank Disc Capacity screen. Press the ENT button to return to the track selection menu. The last track selected will be de-selected automatically.

The Mix process will begin and you will see the following screen:

Mixing 1  
10% 04:31

- √ 1- the system is currently transferring track 1.
- √ 10% - the current track is 10% complete.
- √ 04:31 - current track's running time.

5. Once you have finished selecting the tracks for this Audio CD, press the UP or DOWN button until you see the Are you done? screen. Press the ENT button to confirm your selection.

Total: 6 Trk 26m : 17s  
Are you done?

6. Once the mixing process is completed, you can choose to either continue adding tracks from another audio CD or finalize the CD:

Total: 6 Trk 26m : 17s  
Insert Next Master?

A - If you want to add tracks from a different audio CD, press the UP or DOWN button to select Insert Next Master. Press the ENT button and the audio CD will automatically be ejected. Insert the next audio CD and repeat steps 4 - 6 to continue adding tracks.

Total: 6 Trk 26m : 17s  
Finish Mixing?

B - If you are finished adding tracks to the list, press the UP or DOWN button to select Finish Mixing. Press the ENT button and you will see the Confirm to Finalize screen. Press the ENT button to confirm that you are ready to finalize the CD.

Preparing...  
Waiting for Blanks

7. The audio CD will be automatically ejected. Insert blank discs into the writer drives and press the ENT button.

The Copy process will begin and you will see the Copy Progress screen.



# Duplicators with Internal Hard Drives

# 4

Copying...	H	529M
0/6	40%	79M

- √ H - indicates that the source location is the hard drive
- √ 529M - total size of all tracks.
- √ 0/6 - currently transferring first of six tracks.
- √ 40% - the current track is 40% complete.
- √ 79M - size of current track being copied.

8. Once the Finalizing process is completed, you will see the following screen. You can then press the ENT button and you will exit to the Main Menu. Your Mix Audio CD will be ejected.

Job Completed! Press ENT to Finish
---------------------------------------

## Copy Using Hard Drive

Using the hard drive as the master copy source is the best way to make copies. Since you won't need to occupy the Reader drive with a master disc, you will have one additional drive to use for burning copies.

Using the hard disc as the master copy source improves:

√ **Performance** - Copying from the hard drive enables the writer drives to boost the copying performance to the limit.

√ **Stability** - Copying from the hard drive allows a more stable duplication process than disc-to-disc duplication.

√ **Durability** – The hard drive is a more durable storage device than recordable discs. The recording surface of a recordable disc is exposed and can easily be scratched, potentially corrupting data. The hard drive is shielded and mounted inside the unit, protecting it from incidental damage.

√ **Convenience** – With your master copy sources stored inside the hard drive, you have convenient access to each one. There is no need to search for a master disc every time you want to make a copy; they are all stored inside the system.

Before you can make copies from an existing hard drive partition, make sure you have loaded an image of the Master disc onto the hard disk drive and that the hard disk drive is selected as your source drive.

Kanguru Solutions  
1. Copy

1. From the Main Menu, press the UP or DOWN button to navigate to Copy. Press the ENT button to enter the Copy menu.

Choose Partition  
[TEST1.VEF] 401MB

2. You will see the Choose Partition menu. Use the UP or DOWN button to select the image that you want to copy from and then press the ENT button to confirm your selection.

**Note:** If you receive a “Hard drive is empty” error message, there are no images loaded on the hard drive.

Counter :  
No Counter

3. You will see the Counter screen.

Once you have set the Counter, any trays that do not contain discs in them will automatically be ejected. You will see the following Preparation screens:

4. Insert discs into the drives.

After you've loaded the drives with discs, close the trays and allow 5 - 10 seconds for the system to detect them. If either of the preparation screens are displayed for more than 2 minutes after you have inserted your discs, please check the quality of the discs. Once all the discs have been recognized, you will see the Confirmation screen.

Preparing :  
7 Discs Detected : Go?

**Note:** The “7” indicates that there are seven discs recognized by the Writers. The actual quantity may be different depending on the number of discs you have inserted.

Preparing...  
Please Wait

5. When the number of discs detected matches the number of blank discs you inserted, press the ENT button. You will see the Processing screen.

After 2 to 5 seconds of processing time, the Copy Progress screen will appear.

Copying...      4012MB  
0                  10%              401MB

**Note:** It is normal to see the progress indicator stay at 0-10% and 100% for approximately 30 seconds to one minute for duplication. That is caused by the initializing and finalizing stages.

6. Once the Copy process has been completed, you will see the following screen.

Pass 7    Fail 0                  ( 7 )  
Waiting for Blanks

- √ **PASS 7** - number of discs successfully copied.
- √ **FAIL 0** - number of discs that failed to copy.
- √ **( 7 )** - number of copies made for this job so far.

The successful copies will be ejected. Remove the successful copies, refill the trays with blank media and press the ENT button to continue making another round of copies. Any discs that fail to copy (bad copy) will not be ejected automatically. You will need to manually eject them and throw them away if they are single recording discs. Empty drives will also not be ejected automatically.

7. Terminate the current job.

- a) If you have finished making copies, press the ESC button to terminate the current duplication project and exit to the Main Menu.
- b) If you specified a Counter, once you see the following screen indicating that the specified Counter value has been reached, you can then press the ENT button to

Pass 21    Fail 0  
Job Completed! Press ENT to Finish

## Hard Drive Setup

If you purchased a Kanguru Duplicator with a hard drive, the Hard Drive Setup menu will allow you to manage your hard drive as well as any images and partitions saved on the hard drive.

Kanguru Solutions  
13. Hard Drive Setup

From the Main Menu, press the UP or DOWN button to navigate to Hard Drive Setup. Press the ENT button to enter the Hard Drive Setup menu. Once in the Hard Drive Setup menu, press the ESC button at any time to exit to the Main Menu.

Select HDD as source?  
OK?

Note: You need to select the hard drive as the Source drive in order to access the Hard Drive Setup menu. If the hard drive is not already selected as the Source drive, then you will see the Select HDD as source screen. Press the ENT button to confirm the hard drive as the Source drive.

## Select Partition

The Select Partition setting allows you to select a partition/image to be used as the default partition.

Hard Drive Setup  
1. Select Partition

1. From the Hard Drive Setup menu, press the UP or DOWN button to navigate to Select Partition. Press the ENT button to enter the Select Partition menu.

Choose Partition  
[NEW-0001.VEF] 247M

2. Press the UP or DOWN button to select a partition saved to the hard drive. Press the ENT button to confirm your selection.

Hard drive is empty  
Press ENT to Continue

Note: If you haven't loaded a Master disc image onto the hard drive, you will see the Hard drive is empty screen.

[NEW-0001.VEF] 247M  
Selected!

You will see the Selected screen appear for 2 to 3 seconds and then you will be returned to the Hard Drive Setup menu.

## Load Partition

The Load Partition function will guide you through loading an image of a Master disc into one of the hard drive partitions.

Hard Drive Setup  
2. Load Partition

1. From the Hard Drive Setup menu, press the UP or DOWN button to navigate to Load Partition. Press the ENT button to enter the Load Partition menu.

Load Partition [213GB]  
Load → New Partition

The remaining capacity available on the hard drive is displayed in the upper right corner.

2. From the Load Partition menu press the UP or DOWN button to select how you want to load the image.

You have three options for loading a image to the hard drive:

- ✓ Auto Generate - Load the image on a new partition with a name automatically generated by the system. Automatically generated partitions are assigned a name in the form of New-XXXX where XXXX represents a four-digit number. The first partition created is 0001, the second is 0002, etc...
- ✓ New Partition - Load the image on a new partition with a user created name. You will have to enter the partition name manually.
- ✓ Overwrite - Load the image over an already existing partition. This option is only available if you have previously loaded an image to the hard drive.

3. Press the ENT button to confirm. The Reader drive tray will automatically open.

Preparing...  
Waiting for Master

4. Insert a Master disc into the Reader drive. Close the tray and wait 5 - 10 seconds for the system to recognize the disc.

Note: If the preparation screen is displayed for more than 2 minutes after you have inserted your disc, please check the quality of the disc.

Loading... 247M  
NEW-0001 43% 116M

5. After 2 or 3 seconds of processing time, the Load Progress screen will appear.

Load Partition OK!  
Press ENT to Finish

6. Once the Load process has been completed, you will see the Load Partition OK screen. The Master Disc will automatically be ejected. Press the ENT button to exit to the Hard Drive Setup menu.

## Rename Partition

The Rename Partition function allows you to rename an existing partition/image on the hard drive.

Hard Drive Setup  
3. Rename Partition

1. From the Hard Drive Setup menu, press the UP or DOWN button to navigate to Rename Partition. Press the ENT button to enter the Rename Partition menu.

Choose Partition  
[NEW-0001.VEF] 247M

2. Press the UP or DOWN button to select a partition on the hard drive. Press the ENT button to confirm your selection.

Hard drive is empty  
Press ENT to Continue

Note: If you haven't loaded a Master disc image onto the hard drive, you will see the Hard drive is empty screen.

Rename Partition  
[NEW-0002 ] OK?

3. The Rename Partition screen appears. Enter a new name for the partition and confirm.

[NEW-0002.VEF] 247M  
Renamed!

You will see the Renamed screen appear for 2 to 3 seconds and then you will be returned to the Hard Drive Setup menu.



## Delete Partition

The Delete Partition function allows you to delete an existing image/partition on the hard drive.

Hard Drive Setup  
4. Delete Partition

1. From the Hard Drive Setup menu, press the UP or DOWN button to navigate to Delete Partition. Press the ENT button to enter the Delete Partition menu.

Choose Partition  
[NEW-0001.VEF] 247M

2. Press the UP or DOWN button to select a partition saved to the hard drive. Press the ENT button to confirm your selection.

Hard drive is empty  
Press ENT to Continue

Note: If you haven't loaded a Master disc image onto the hard drive, you will see the Hard drive is empty screen.

Delete Partition  
[NEW-0002.VEF], OK?


3. The Delete Partition Confirmation screen appears. Press the ENT button to confirm the image for deletion.

NEW-0002.VEF  
Deleted!

You will see the Deleted screen appear for 2 to 3 seconds and then you will be returned to the Hard Drive Setup menu.

## Partition Info


The Partition Info function allows you to view additional information for all existing partitions/images stored on the hard drive. This information includes disc type, capacity, etc...



```
Hard Drive Setup
5. Partition Info
```

1. From the Hard Drive Setup menu, press the UP or DOWN button to navigate to Partition Info.

2. Press the ENT button to enter the Partition Info menu.



```
(003) DVD 4438M
NEW-0003.VEF
```

- √ (003) - The partition on the hard drive.
- √ DVD - The media format.
- √ 4438M - The partition size.
- √ NEW-0003.VEF - The partition name.

3. Press the UP or DOWN button to view information about another partition.

4. Press the ENT or ESC button to exit to the Hard Drive Setup menu.

# Duplicators with Internal Hard Drives

# 4

## Format Hard Drive

The Format Hard Drive function allows you to re-format the internal hard drive.

**WARNING!** During the formatting process, all of the data stored on the hard drive will be permanently erased. Please use this function with caution.

Hard Drive Setup  
6. Format Hard Drive

1. From the Hard Drive Setup menu, press the UP or DOWN button to navigate to Format Hard Drive. Press the ENT button to enter the Format Hard Drive menu.

All stored data will be erased  
Press ENT to Continue

2. Press the ENT button to confirm that you want to format the hard drive.

Processing...  
Please Wait

The Processing screen will appear. Please allow 1 – 2 minutes for the Hard Drive Format process to complete.

Hard Drive  
Format Complete

3. Once the Hard Drive Format process completes, the Hard Drive Format Complete screen will appear for 2 - 3 seconds and then you will be returned to the Hard Drive Setup menu.

The Blu-ray and DVD duplicators are fully standalone by default however our duplicators with internal hard drives do have the optional ability to be accessed via a computer. This computer connection is available by enabling External Connection within the main menu. This connection allows you to transfer data in form of ISO files to your duplicator internal hard drive.

## CopyConnect for Mac

Like the Kanguru Media Manager, the CopyConnect software needs to be installed on your Mac in order for it to recognize the Kanguru Duplicator's hard drive through the USB connection.

The Kanguru Duplicator's internal hard drive is formatted using a proprietary file system that is not recognized by your Apple computer. Once you have installed the CopyConnect software on your Mac, your Mac will be able to recognize the file system and you will be able to access the Duplicator's internal hard drive, allowing you to copy or save files directly from your computer to your Duplicator through the USB connection.

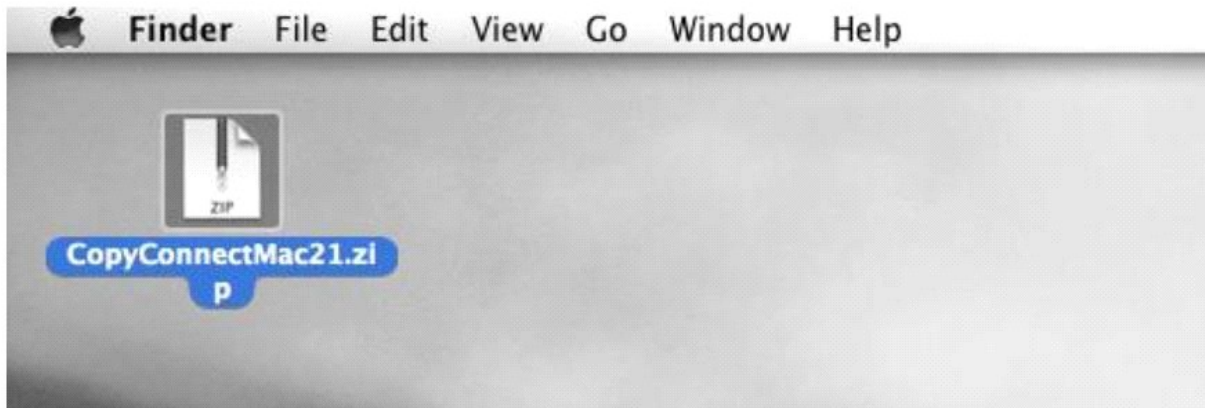
## CopyConnect Installation

Copy Connect v2.1 Minimum Hardware Requirements:

- ✓ Mac Computer (Mac OS X 10.8 and later supported)
- ✓ Intel i386 or x86\_64 processor ✓ USB2.0 port
- ✓ 10MB of free disc space on your hard drive

## Software Installation

1. Download the Mac CopyConnect software from the Kanguru Support site.



2. The CopyConnectMac21.zip file is password protected and cannot be extracted by the Mac Archive Utility. You will need to use the Mac Terminal:

- a) Open the Utilities window and select Terminal.



- b) The Terminal window appears. Type “cd desktop” and then press the Enter key.
- c) Type “unzip copyconnectmac21.zip” and then press the Enter key. The terminal will ask you to provide a password:

```
Terminal — unzip — 80x24
Last login: Mon Aug  4 12:15:43 on ttys000
macbook41:~ Kanguru$ cd desktop
macbook41:desktop Kanguru$ unzip copyconnectmac21.zip
Archive:  copyconnectmac21.zip
[copyconnectmac21.zip] CopyConnect for Mac.2.1.dmg password: █
```

d) The Copy Connect password can be found on the Product Key label affixed to the back of the duplicator. The password must be entered exactly as it appears on the label with hyphens included.

e) If you entered the password correctly then the installer files will be extracted.

```
Terminal — bash — 80x24
Last login: Mon Aug  4 12:15:43 on ttys000
macbook41:~ Kanguru$ cd desktop
macbook41:desktop Kanguru$ unzip copyconnectmac21.zip
Archive:  copyconnectmac21.zip
[copyconnectmac21.zip] CopyConnect for Mac.2.1.dmg password:
  inflating: CopyConnect for Mac.2.1.dmg
macbook41:desktop Kanguru$ █
```

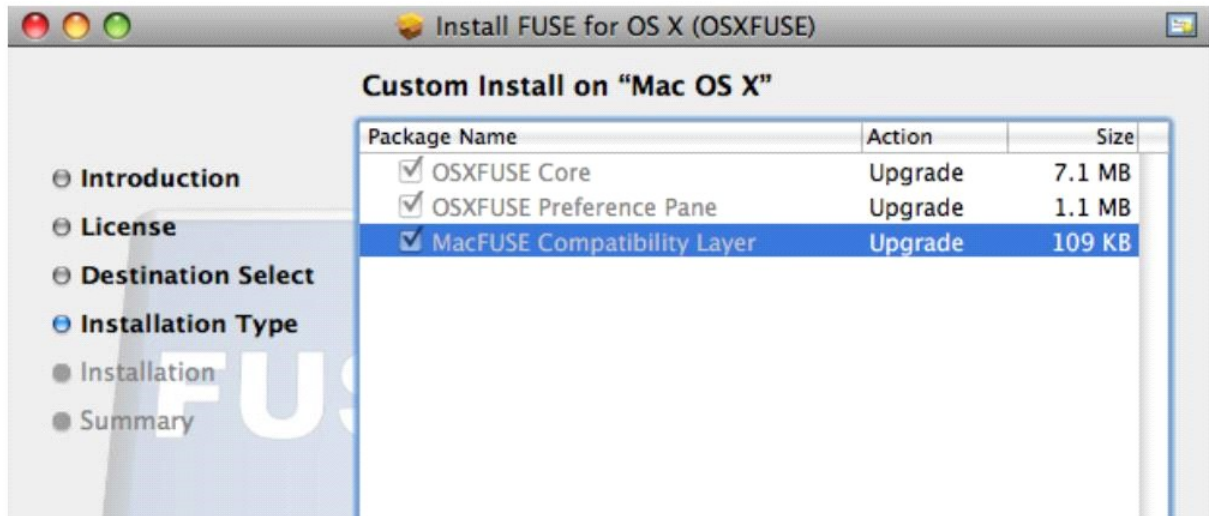
3. The file CopyConnect for Mac.2.1.dmg appears on the desktop. Double click it to mount and open the .dmg file.



4. Double click the Install OSXFUSE 2.6 file to install OSXFUSE. OSXFUSE allows Mac OSX to recognize the file system used by the duplicator's internal hard drive.



5. When you reach the “Installation Type” screen during the installation, Mac FUSE Compatibility Layer MUST be selected.



Note: If the installer asks you for a password, the password is the admin password you use to login to Mac OSX.

6. After OSXFUSE is successfully installed, double click on the CopyConnect for Mac.mpkg file to install the Copy Connect software.



Note: If the installer asks you for a password, the password is the admin password you use to login to Mac OSX.

7. Follow the instructions on screen to complete the installation of the Copy Connect software.

8. When Copy Connect is installed, it will appear in the Applications window.





Note: You can also type “CopyConnect for Mac” from your Spotlight search as well.

## How to Use CopyConnect

After you have successfully installed Copy Connect onto your computer, you can now copy or save DVD image files to the Kanguru Duplicator's hard drive through your computer.


**Warning!** Do not try to access the Duplicator's hard drive through your computer before you have installed Copy Connect. If you try to access the Duplicator's hard drive through your computer before installing Copy Connect, your computer will not be able to recognize the file format and you will be prompted to format the hard drive. Do not format the hard drive; doing so will erase any data stored on the hard drive.

1. Open the Applications window and double click CopyConnect for Mac to launch the Copy Connect software. Only run the CopyConnect for Mac (unprivileged) when you do not admin rights on the computer.



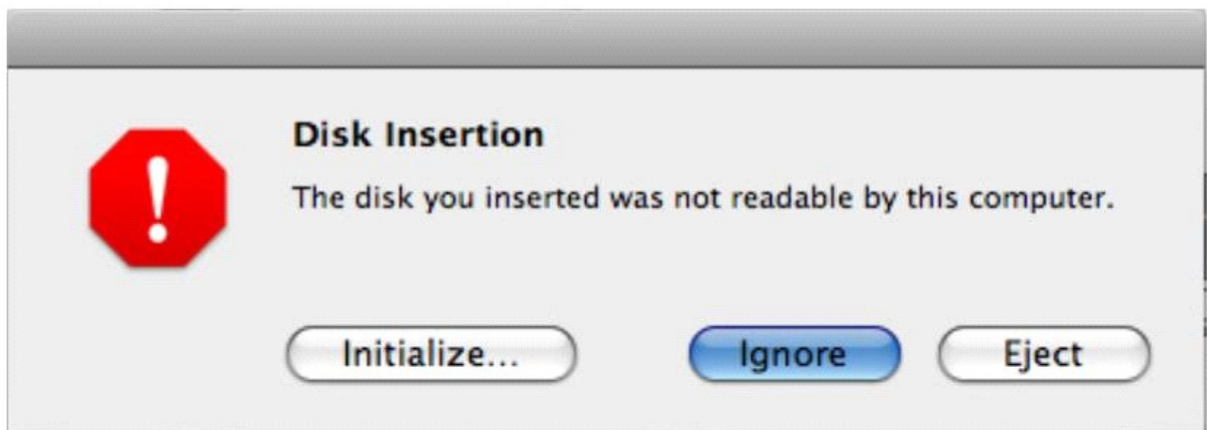
The Copy Connect menu appears.



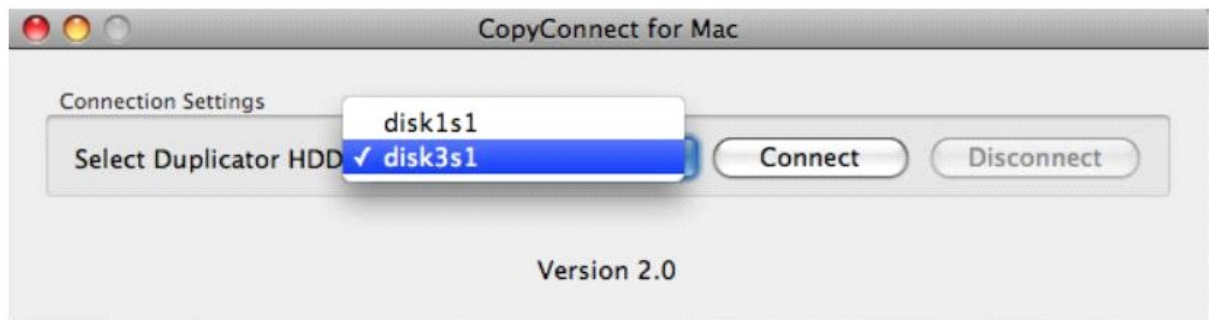
2. Click on  and note the drives that are listed.



3. Connect your Duplicator to your Mac computer using the supplied USB cable.
4. Enable the External Connection option on the DVD Duplicator.
5. You will receive a Disk Insertion warning message from the operating system. Click Ignore.



6. In the Copy Connect menu, click on  and click on the drive that has been added to the list.



7. Click on the Connect button.



8. A new USB hard drive named “Duplicator” appears on the desktop.



9. When you open the “Duplicator” drive, you will see three folders: dup, label and system. Any ISO image files that you want to save to the duplicator’s hard drive must be saved in the dup folder.



10. When you are done copying your ISO files to the duplicator's internal hard drive, drag the Duplicator drive icon to the trash can to eject it and then click on the Disconnect button.



You can now disconnect the USB cable.

Turn the External Connection setting on the duplicator to. This will require you to restart the Duplicator. When the Duplicator boots up, you will be able to access the ISO image files saved on the Duplicator's internal hard drive.

## Kanguru Media Manager

The Kanguru Media Manager needs to be installed in order for your computer to recognize the Kanguru Duplicator's hard drive through the USB connection (or Ethernet connection on Network Models).

The Kanguru Duplicator's hard drive is formatted using a proprietary file format that is not recognized by your computer. Once you have installed the Kanguru Media Manager on your PC, your PC will be able to recognize the file format and you will be able to access the Duplicator's hard drive, allowing you to copy or save files directly from your computer to your Duplicator through the USB connection.

## Media Manager Installation

### Minimum Hardware Requirements:

- √ Pentium 3 Class CPU or better
- √ CD-ROM drive
- √ 512MB of RAM
- √ 10MB of free disc space on your hard drive.

### Software Installation

1. Insert the Kanguru Media Manager Installation Disc into the CD drive of your computer.
2. Under My Computer or Windows Explorer, click on the CD drive.
3. From the CD Drive, double-click Setup.exe to run the setup program.
4. The Installation Program appears. Select I Accept after reviewing the license information and then click on the Next button.
5. You will be prompted for a Product Key. The Product Key can be found on the back of you Kanguru Duplicator. Enter your Name, Company Name (optional) and Product Key into the appropriate fields and then click on the Next button.

Note: The product key is case sensitive. Make sure you enter the product key exactly as it appears on the back of your Duplicator.

6. Select a destination folder where the necessary files will be installed into and then click on the Next button.
7. Select the programs you want to install from the next screen and then click on the Next button.

Note: ImgBurn is a 3rd party application that is used for creating ISO image files to/from DVDs or CDs. If you have already installed ImgBurn or have a similar application that you use for creating image files, you do not need to install ImgBurn.

8. Complete the install wizard to finish installing the Kanguru Media Manager.

## How to Use Media Manager

Once you have installed Kanguru Media Manager you will be required to restart your computer before it can recognize the Duplicator's hard drive.

After you have successfully installed the Kanguru Media Manager onto your computer, you can now copy or save DVD image files to the Kanguru Duplicator's hard drive through your computer.

**Warning!** Do not try to access the Duplicator's hard drive through your computer before you have installed Kanguru Media Manager. If you try to access the Duplicator's hard drive through your computer before installing the Kanguru Media Manager, your computer will not be able to recognize the file format and you will be prompted to format the hard drive. Do not format the hard drive; doing so will erase any data stored on the hard drive.

1. Connect the Kanguru Duplicator to your computer via USB using the provided USB cable.
2. From the Duplicator's main menu, turn the USB Connection setting to On. This will require you to restart the Duplicator.

**Note:** While the USB Connection setting is On, you will not be able to access the Duplicator's hard drive from the Duplicator. You can only access the Duplicator's hard drive from the Duplicator when the USB Connection setting is Off.

3. When the Duplicator boots up, a new Hard Disk Drive named Duplicator will appear under My Computer.

### Hard Disk Drives

---



Local Disk (C:)



Duplicator (F:)

4. Copy/Save your DVD image (.iso) files to the Duplicator's hard drive  
√ DVD image files (.iso) - Copy/Save your .iso image files in the folder named Dup on the Duplicator's hard drive. All image files must be stored in this folder for proper functionality.
5. When you have finished copying your .iso image file(s) to the Kanguru Duplicator, turn the USB Connection setting to Off. This will require you to restart the Duplicator.
6. Disconnect the USB cable.

When the Duplicator boots up, you will be able to access the Duplicator's hard drive from the Duplicator again.



Note: The Kanguru Duplicator comes with ImgBurn software which can be used to create .iso image files from DVDs. ImgBurn is a 3rd party software and is not supported by Kanguru Solutions. For ImgBurn information or support, please check the ImgBurn website at : [www.imgburn.com](http://www.imgburn.com)

## Duplicator Network Center

The Kanguru Duplicator Network Center software needs to be installed on a PC in order to be able to access the duplicator's internal hard drive through your local area network. Once installed, you will be able to conveniently transfer files to and from the duplicator's internal hard drive from your PC over a network connection.

Note: You are only able to access the internal hard drive through the network connection. You still need to manually execute the actual duplication process. Only one user at a time can access the Duplicator's internal hard drive through the network.

## Network Center Installation

### Minimum Requirements

- √ Pentium 3 Class microprocessor or better
- √ Ethernet 10/100Mbps LAN Port
- √ 32Mbytes of RAM
- √ 10Mbytes of free disc space on your hard drive
- √ Kanguru Media Manager software
- √ Windows Server 2003, Vista or later

To install the Duplicator Network Center.

1. Insert the CD that came included with your Kanguru DVD Duplicator. If you did not receive a CD with your duplicator or if you misplaced your CD, you can download a copy of the installer file on our support site under the Downloads -> Duplicators -> Disc Duplicators section.
2. Open “My Computer” or Windows Explorer and enter the CD drive.
3. Double-click on the DuplicatorNetworkCenter\_v1.5.1.exe install application.
4. Follow the Installation Wizard to complete the installation process.

Note: You can find the product key on the Product Key sticker located on the back of the Duplicator.

5. You will need to restart your computer before the installation process can complete.

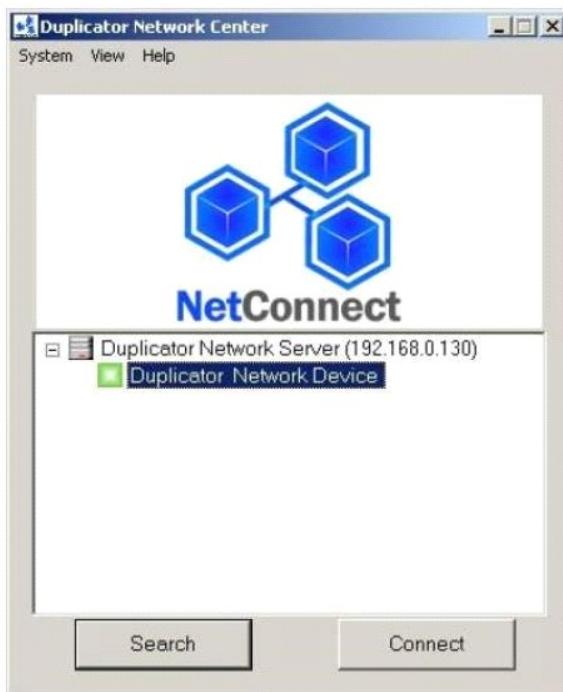
## How to Use Network Center

Once your Duplicator has been setup and connected to your LAN, you can begin using the Duplicator Network Center software to transfer files to and from the Duplicator's internal hard drive over your network.

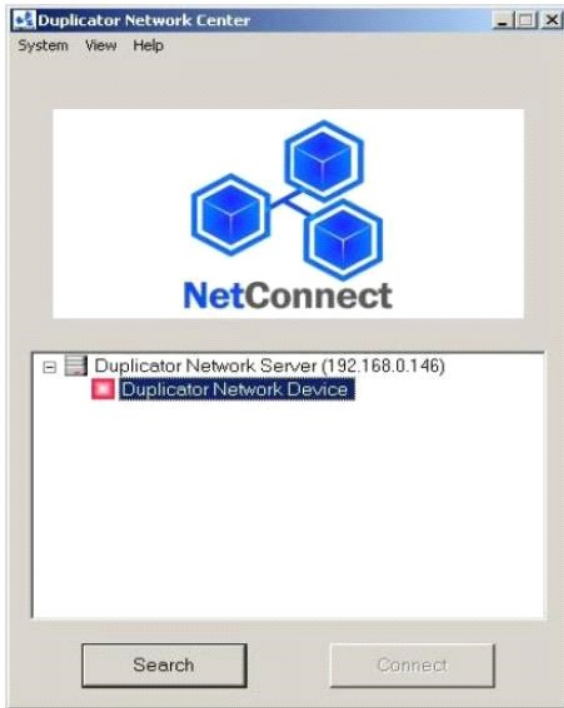


1. Double-click on the “Duplicator Network Center” icon located on your desktop

2. The Duplicator Network Center window appears.



Normally you will see a green icon appear next to “Duplicator Network Device”. The green icon indicates that the network Duplicator has been recognized and is ready to be connected. Click on the Connect button and proceed to the next step.



A red icon appearing next to “Duplicator Network Device” indicates that the network Duplicator is currently being accessed by another user.

You can send the other user a request to disconnect by right-clicking “Duplicator Network Device” and then selecting “Request Disconnect” from the menu. You will receive a notification when the Duplicator Network Device is available. The red icon will turn green when the Duplicator is ready. Click on the Connect button and proceed to the next step.

3. A new Hard Disk Drive named “Duplicator” now appear under My Computer. You can now copy/paste or click/drag your files into the Duplicator’s internal hard drive. CD and DVD images should be saved in the folder named “DUP” located in the “Duplicator” hard drive.

### Hard Disk Drives

---



## Network Center Troubleshooting

Symptom	Problem	Solution
The Duplicator Network Center Software won't detect the Network Duplicator.	The Duplicator's Network Module is pre-configured as DHCP by default.	Connect under a DHCP LAN environment and then manually configure the network settings by clicking on the "System" menu and then select Server Setting.
Duplicator Network Device always has a red icon and I can't connect to it.	The red icon is an indication that the network device is currently being used by another user.	You can obtain more details about the current connection by right clicking on "Duplicator Network Device" and selecting Details. You can send the other user a request to disconnect by selecting "Request Disconnect".
The Duplicator Network Device has a yellow "!" exclamation mark on the red icon and I can't connect to it.	This is an indication that the Ethernet port is being over prioritized by the USB port.	Make sure that the USB port is not connected while the Ethernet cable is connected.
I've connected to the Duplicator Network Device successfully but my PC does not have any drive letter that is associated with the hard drive.	The hard drive's drive letter has not been automatically assigned.	Click on the "System" menu and then select Mount Drive. A window appears that allows you to manually assign the drive letter.
I've connected to the Duplicator Network Device successfully but my computer asks me to format the hard drive when I click on it.	Kanguru Media Manager isn't installed. The Kanguru Duplicator's hard drive is formatted with a proprietary file system that requires Kanguru Media Manager to be installed.	Install Kanguru Media Manager and reboot your computer.

# Warranty and Tech Support

# 6

This product carries a 1 year\* limited warranty on the power supply, controller, and all internal components. The warranty does not cover any IDE, SATA, or Power cables. Kanguru Solutions is not responsible for any damages incurred in the shipping process. Any claims for loss or damage must be made to carrier directly. Claims for shipping errors should be reported to Kanguru Solutions within three (3) working days of receipt of merchandise. Please refer to the RMA Procedure section of this manual if your duplicator needs servicing. Kanguru Solutions does not offer money back returns on its duplicator product lines due to the unique nature of the product. All units will be fully supported under manufacturer's and/or extended warranty plans.

## Tech Support

If you experience any problems installing your Kanguru product or have any technical questions regarding any of our products, please call our tech support department. Our tech support is free and available Monday thru Friday, 9am to 5pm EST.

Call 1-508-376-4245 Or visit our website at [www.Kanguru.com](http://www.Kanguru.com)

## Troubleshooting

<p>No display on the LCD or the unit does not operate when the power is on.</p>	<ul style="list-style-type: none"> <li>✓ Check that the power cable is securely connected at both ends and that your electrical outlet's voltage is correct.</li> <li>✓ Make sure the power voltage on the duplicator matches the voltage of your power outlet.</li> <li>✓ If the system was stored in a location where the temperature dropped below 32°F (0°C) within the past 24 hours, leave the system in a warm room with temperatures of at least 65°F (19°C) for 4 hours prior to powering it on.</li> </ul>
<p>The system cannot recognize the master disc.</p>	<ul style="list-style-type: none"> <li>✓ Check the format of the master disc or the master disc itself for damage.</li> <li>✓ Your master disc may be copy protected. Most DVD/Blu-ray Discs and some CDs purchased from stores have copy protected encryption encoded in them.</li> <li>✓ Use one of the Writers to read your master disc by selecting one of Writers as the Copy source. If this works, make a copy of your master disc and treat the copy as the new master. Set the Copy source back to the Reader and try again.</li> <li>✓ Your master disc may be on an unsupported brand of media.</li> <li>✓ Try a different brand of master disc.</li> </ul>
<p>Buttons do not function.</p>	<ul style="list-style-type: none"> <li>✓ The Duplicator may still be busy performing a task. Wait a moment and then press the button again. If the button still doesn't work, turn off the Duplicator, and then restart the machine after a minute.</li> </ul>
<p>Copy completed but the copies are not readable / executable.</p>	<ul style="list-style-type: none"> <li>✓ Use the Compare feature to check the copied discs against the master copy source.</li> <li>✓ The quality of your media plays a big role on this part. Try to use high quality media to prevent such problems.</li> <li>✓ Use another BD/DVD/CD player/ROM to test the copied media. Sometimes, your BD/DVD/CD Player/ROM may not be compatible with the recordable BD/DVD/CD disc.</li> </ul>
<p>System turns on but fails to boot up.</p>	<ul style="list-style-type: none"> <li>✓ This could be due to a more serious issue. Contact Kanguru Tech Support.</li> </ul>



The failure rate is high.	<ul style="list-style-type: none"> <li>√ Lower the write speed and try again. The quality of your media plays a big role on this part.</li> <li>√ Try to use high quality media to prevent such problems.</li> </ul>
Do I need to upgrade my system's firmware?	<ul style="list-style-type: none"> <li>√ Please contact Kanguru Solutions Tech Support if you think you need to upgrade your firmware.</li> </ul>
System fails to upgrade firmware.	<ul style="list-style-type: none"> <li>√ This could be due to a more serious issue. Contact Kanguru Tech Support.</li> </ul>
Can I load data directly from my computer to my system's hard drive?	<ul style="list-style-type: none"> <li>√ In order to load data from your computer to your Duplicator, you must first install the provided Kanguru Media Manager software.</li> </ul>
Some writers will not create copies.	<ul style="list-style-type: none"> <li>√ If those writers are associated with an external connection, please make sure the USB connection is off and restart your system.</li> <li>√ Reset the system back to the default settings.</li> </ul>
Hard Drive not displayed at full size	<ul style="list-style-type: none"> <li>√ Hard drive manufacturers use a conversion rate of 1GB = 1 Billion Bytes or 1000<sup>3</sup> Bytes. However, most Operating Systems, including our Duplicator uses the standard conversion rate of 1GB = 1.074 Billion Bytes or 1024<sup>3</sup> Bytes. Therefore, an advertised 250GB (250 Billion Bytes) hard drive's true capacity based on our system's standard is approximately 233GB (may vary from system to system).</li> </ul>
Cannot access the Duplicator's HDD from the Duplicator	<ul style="list-style-type: none"> <li>√ Make sure that the USB Connection is not turned On.</li> </ul>
Cannot access the Duplicator's HDD from a computer.	<ul style="list-style-type: none"> <li>√ Make sure that the USB cable is connected securely from your computer to the Duplicator.</li> <li>√ Make sure that the Make sure that the USB Connection is turned On.</li> <li>√ If you are receiving an error message from your computer stating that the drive isn't formatted, make sure that you have Kanguru Media Manager installed.</li> </ul>
Where do I find the product number that is required for installing the included software?	<ul style="list-style-type: none"> <li>√ Your product number can be found on the back of the Duplicator by the USB port.</li> </ul>

## Error Codes

Error code	Meaning	How to Fix
16	Hard drive write error	If a hard drive format does not correct the issue then the drive will need to be replaced.
32	Return command error	Controller sends out a command and receives an error back. Most likely issue with the Media
37	Reader is not responding	Try a different master, media or replace the source drive
39	Generic error	Caused by a bad LightScribe label file (LSI)
41	Read Error Limit	Description: Read errors exceed the specified limit <b>Possible Solution: Replace with new master OR change Read Retries setting in Setup menu.</b>
162	Bad Master Disk	Description: there is atleast one bad sector on the disk that is preventing the duplication to be completed correctly. <b>Possible Solution: Create a new master disk.</b>
168	Generic error	Check FW. If update does not work then the device will need to be sent to Kanguru for RMA and possible controller replacement.
200	Source Disc Empty	Description: The intended master disc is detected and identified successfully ,but it is a blank disc. <b>Possible Solution: Please double check the master disc to ensure it contains data.</b>
201	Bad Master	Description: The master disc is detected but cannot be identified within 3 minutes. <b>Possible Solution: Please check the master disc for quality, defects or errors.</b>
202	No Targets	Description: The blank disc(s) are missing when the job starts. <b>Possible Solution: Please make sure blank discs are placed in Writer trays.</b>
203	Burner Mixed or Firmware version Mixed	Description: The model or firmware version of the writers in the duplicator is not the same. <b>Possible Solution: This typically happens when you have recently replaced a Writer drive. Contact Tech Support.</b>
204	Targets & Master Not Compatible	Description: The master disc and targets (blanks) are not of the same format. The Kanguru Duplicator can't cross copy across different media formats. <b>Possible Solution: Please go to Disc Info in the Advanced Setup menu to make sure the master disc and the blank discs are the same format (see section "3.13.14.1 Disc Info" on page 44).</b>
205	Targets Not Blank	Description: The target (blank) discs are not detected and identified as either RW/R discs or blank discs. <b>Possible Solution: Please go to Disc Info in the Advanced Setup menu to make sure the intended blank discs are empty (see section "3.13.14.1 Disc Info" on page 44).</b>

206	Targets & Master Size Mismatch	Description: 1. When the error code occurs during the Compare process, the size of the master disc and the successfully copied disc(s) is different. The Kanguru Duplicator can't cross copy across different media formats. 2. When the error code occurs during a Copy related process, the capacity of the blank disc(s) is less than the data size of the master disc. <b>Possible Solution: 1. When the error code occurs during the Compare process, contact Tech Support. 2. When the error code occurs during a Copy related process, please go to Disc Info in the Advanced Setup menu to make sure the blank disc's capacity is large enough to fit the data size of the master disc.</b>
207	Targets M Code Mixed	Description: The blank discs contain different manufacture codes. <b>Possible Solution: Please go to Disc Info in the Advanced Setup menu to make sure every blank disc has the same media ID (M-Code) (see section "3.13.14.1 Disc Info" on page 44). Make sure all targets are from the same manufacturer and replace the one(s) that are different if necessary.</b>
208	Targets are not RW discs	Description: The target(blank) discs are not Rewritable discs <b>Possible Solution: Please go to Disc Info in the Advanced Setup menu to make sure every blank disc is a rewriteable disc (see section "3.13.14.1 Disc Info" on page 44).</b>
209	Master Disc is CSS Protected	Description: The master disc is copy-protected. <b>Possible Solution: This master disc contains copy-protection. Please try a different master disc without any copy-protection.</b>
210	Bad Discs	Description: The target (blank) disc(s) are detected but can not be identified. <b>Possible Solution: Please double check the blank disc(s) quality.</b>
211	This format can not be tested	Description: The target (blank) disc(s) is DVD+R, DVD+RW, DVD+R DL, BD-R or BD-RE. <b>Possible Solution: Above disc formats are not supported by the Test function. Please only use DVD-R/RW or CD-R/RW discs for this function</b>
212	DVD is not supported	Description: Your system does not support the DVD format. <b>Possible Solution: Compatible DVD drive required.</b>
213	DVD-RAM is not supported	Description: Your system does not support the DVD-RAM format. <b>Possible Solution: Compatible DVD drive required.</b>
214	Blu-ray is not supported	Description: Your system does not support the Blu-ray format. <b>Possible Solution: Compatible Blu-ray drive required.</b>
230	Not enough HDD space	Description: The empty space in the hard drive is less than the size of the master disc. <b>Possible Solution: Please free up hard drive space by deleting unnecessary partitions/images before loading more images.</b>

231	Redundant Name	Description: The image name entered has already been used in the system. <b>Possible Solution: Please enter a different image name, or rename the existing file name which is in conflict before you re-enter this name.</b>
232	Format Failed	Description: The system is not able to format the hard drive. A detailed error code will be displayed at the end of the error message. <b>Possible Solution: Possible hard drive failure; please try to replicate error and then contact Tech Support</b>
233	Hard Drive Corrupted	Description: The hard drive's information is corrupted. <b>Possible Solution: Please re-format the hard drive.</b>
235	Hard Drive Access Error	Description: There's an error when accessing the hard drive. <b>Possible Solution: Possible hard drive failure; please contact Tech Support.</b>
240	Wrong Password!	Description: The password entered is not correct <b>Possible Solution: Please confirm you typed in the correct password or try a different password.</b>
241	Login Failed	Description: An incorrect password was entered 3 times consecutively <b>Possible Solution: Wait for 5 minutes, then try to use the correct password for the next the attempt. If the problem persists, call Tech Support.</b>
250	Source Cannot Be HDD	Description: The source is configured as the hard drive when trying to perform the Mix Audio Tracks function. <b>Possible Solution: Change the Copy source to the Reader if no hard drive is available.</b>
251	Copy Audio Error	Description: An error occurred during the mixing process of your audio CD. <b>Possible Solution: Try different master or blank discs.</b>
252	Not Audio CD	Description: The total size of the selected tracks is larger than the capacity of the target blank disc during the track selection process. <b>Possible Solution: Try to select an alternative track with a smaller capacity</b>
253	Over Blank Disc Capacity	Description: The total size of the selected tracks is larger than the capacity of the target blank disc during the track selection process. <b>Possible Solution: Try to select an alternative track with a smaller capacity</b>
260	No Update File	Over Blank Disc CapacityDescription: The system can NOT locate the Firmware Update File during the Update Firmware process <b>Possible Solution: Confirm the file is not a "zip" file. If it is, please extract it before you burn it to a CD. Confirm the update file is written as "Mode 1" Data CD Usually a Data CD created with Windows XP or Roxio's Drag-to-Disk is not in this format</b>

261	Wrong update File	Description: The Firmware Update File is not compatible with your system or the Firmware Update File is corrupted. <b>Possible Solution: Get an updated version of the Firmware Update File.</b>
262	Unknown flash model	Description: The Firmware Update File is not meant for your system. <b>Possible Solution: Contact Tech Support for the proper Update file</b>
263	Job Abort	Description: A job is aborted by the user pressing the ESC button for more than 5 seconds during a job. <b>Possible Solution: Restart the job when ready with the proper master disc &amp; blank discs.</b>

## RMA Procedure

It is recommended that all Duplicators being serviced BE PACKED IN THE ORIGINAL PACKAGING. If you do not have your original packaging, you can purchase replacement packaging for \$15.00 from Kanguru's Tech Support Department. Kanguru Solution's warranty will not be honored in the event that a duplicator is received improperly packaged, altered, or physically damaged.

STEP ONE: Call for a RMA Number: 508-376-4245

Duplicators will not be accepted for repair without a valid RMA number. RMA numbers are valid for 30 days upon assignment. Any return without a valid RMA number will be returned to the customer at their expense.

STEP TWO: Ship and Insure your Duplicator

Kanguru Solutions strongly recommends you fully insure the duplicator for shipping. Kanguru Solutions is not responsible if the package is lost or damaged in transit. We suggest using a shipping company that utilizes a "tracking" feature to verify "proof of delivery." The customer is responsible for shipping charges when returning a product. Shipping back to the customer is covered by Kanguru Solutions during the first 90 days of purchase. After 90 days of purchase the customer is responsible for shipping both ways.

Clip and Use this Label to Ship Your Return



Kanguru Solutions  
Tech. Support Dept.  
1360 Main St.  
Millis, MA 02054

RMA#