

KanguruClone Hard Drive Duplicator SerialPort Terminal Guide

Models: KCLONE-5HD-SATA and KCLONE-14HD-SATA

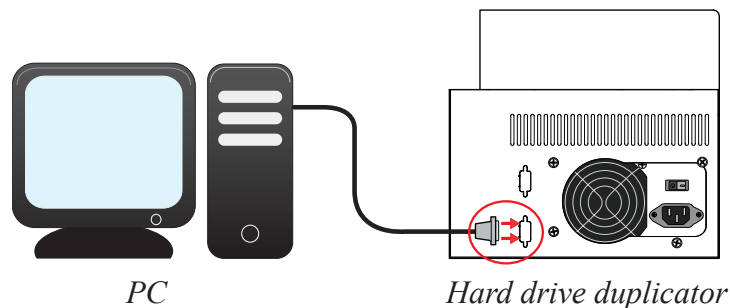
Kanguru Solutions has developed the SerialPort Terminal application for use with your KCLONE-5HD-SATA or KCLONE-14HD-SATA hard drive duplicator. The SerialPort Terminal application is a text based logging tool for recording duplicator operations. The generated text can be saved for auditing purposes, or can be provided to a Kanguru support technician for troubleshooting assistance.

Requirements:

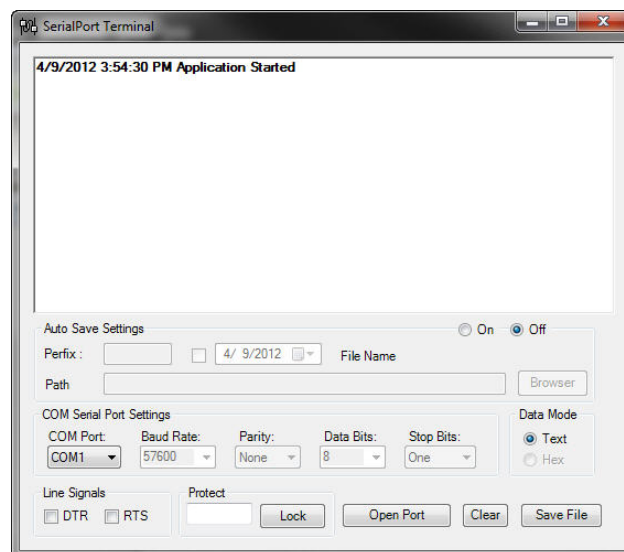
- KCLONE-5HD-SATA or KCLONE-14HD-SATA hard drive duplicator
- Windows XP, Vista or 7 operating system, 32-bit and 64-bit compatible
- PC with a USB port (USB2.0 suggested)

To run the SerialPort Terminal application:

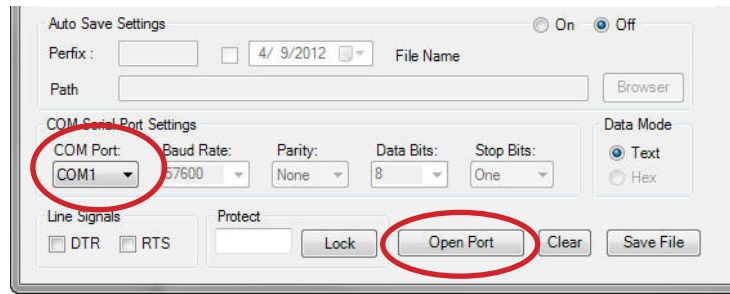
1. Locate the two serial ports located on the back of your Kanguru hard drive duplicator.
2. Connect the provided Serial to USB cable from the bottom serial port on your hard drive duplicator to your PC.
Note: If Windows asks you for a driver, the necessary drivers are located on the provided CD under the "Drivers" folder.



3. Insert the CD you received from Kanguru Solutions in your PC's optical drive.
4. Open My Computer and navigate to the Kanguru CD. Double click on **SerialPort Terminal.exe**. The SerialPort Terminal application launches.

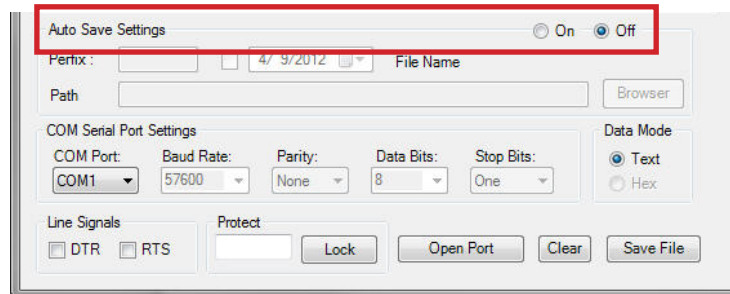


5. Normally the “COM Port” setting is auto-detected. However if the correct COM port isn’t selected, you will need to configure this option manually. Click on the **Open Port** button.

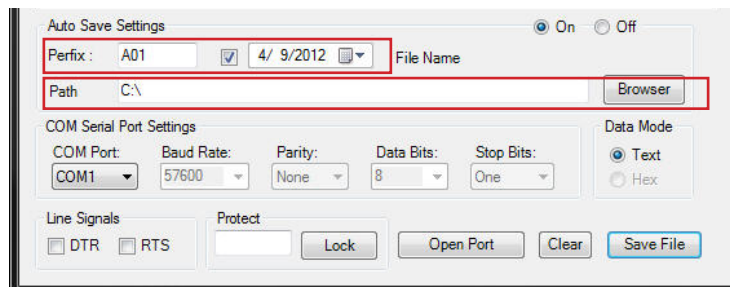


6. Power on your Kanguru hard drive duplicator.

Congratulations! You have successfully enabled communication between the hard drive duplicator and the SerialPort Terminal application. Every system level operation executed by the duplicator will be displayed in plain text through the Terminal application. Now that you have established communication between the hard drive duplicator and the SerialPort Terminal application you have two methods for saving the text as a log file, **Manual** and **Auto**.



- **Manual** - Configure the “Auto Save Settings” option to **Off**. You will need to manually click on the **Save File** button whenever you want to save the log file.
- **Auto** - Configure the “Auto Save Settings” option to **On**. Auto saving is recommended if you want to save a log file for every duplication cycle. Every duplication cycle will generate a log file and assign a file name with a serial number. If you turn Off the SerialPort Terminal application, it will reset the serial numbers. When you run the program again, serial numbers will restart at “0001”. You can configure how the serialized file name is generated:
 - **Prefix** - Set the file name prefix. This is the base filename (e.g. A01) that will precede a serial number (e.g. A01-00001.log, A01-00002.log, A01-00003.log, etc...).
 - If you enable the **Date** (e.g. 2012, 04/09), this information will appear between the prefix and the serial number (e.g. A01-20120409-0001.log, A01-20120409-0002.log, etc...).
 - **Path** - Select the folder location where the log files will be saved.



The KanguruClone Hard Drive Duplicator is guaranteed to be free from defect in materials and workmanship for one year. Kanguru Solutions does not offer money back returns on its duplicator product lines due to the unique nature of the product. If you experience any problems using your KanguruClone Hard Drive Duplicator or have any technical questions, please call our technical support department. Our tech support is available Monday through Friday, 9am to 5pm EST. Call 1-508-376-4245 or visit our website at www.Kanguru.com