



USER'S MANUAL

QS2 USB2.0 QS2 USB2.0/eSATA Combo and QS2 USB2.0/eSATA/Firewire Combo Models



FCC COMPLIANCE STATEMENTS

This equipment has been tested and found to comply with the limits for a Class B digital device, pursuant to Part 15 of the FCC Rules. These limits are designed to provide reasonable protection against harmful interference in a residential installation. This equipment generates, uses and can radiate radio frequency energy and, if not installed and used in accordance with the instructions, there is no guarantee that interference will not occur in a particular installation. If this equipment does cause harmful interference to equipment off and on, the user is encouraged to try to correct the interference by one or more of the following measures:

- Reorient or relocate the receiving antenna.
- Increase the Distance between the equipment and receiver.
- Connect the equipment into an outlet on a circuit different from that to which the receiver is connected.
- Consult the dealer or an experienced radio/TV technician for help.

Please be aware of the following points before using your Kanguru QS2 hard drive.

Copyright© 2007, Kanguru Solutions. All rights reserved.

DOS[®], Windows 2000[®], Windows ME[®], Windows XP[®], Windows Vista[™] and Windows 7[™] are registered trademarks of Microsoft Inc. Apple[®] and Macintosh[®] are registered trademarks of Apple Inc. IBM and OS/2 are registered trademarks of the International Business Machines Corporation. All other brand or product names are trademarks of their respective companies or organizations.

Kanguru Solutions will not be held responsible for any illegal use of this product nor any losses incurred while using this product. The user himself is responsible for the copyright laws, and is fully responsible for any illegal actions taken.

CUSTOMER SERVICE

To obtain service or technical support for your system, please contact Kanguru Solutions Technical Support Department at 508-376-4245, or visit www.Kanguru.com for web support.

LIMITED WARRANTY

Kanguru Solutions guarantees that every Kanguru QS2 will be free from defects in workmanship and materials for 1 year from the date of purchase. The Hard Drive installed in the QS2 is covered for 3 years. This warranty does not apply if, in the judgment of Kanguru Solutions, the product fails due to damage from handling, accident, abuse, misuse, or if it has been used in a manner not conforming to the product's instructions, has been modified in anyway, or the warranty labels have been removed. If the product proves defective during this warranty period, call Kanguru Solutions Technical Support in order to obtain a RMA required for service. When returning a product, mark the RMA number clearly on the outside of the package, and include a copy of your original proof of purchase.

In no event shall Kanguru Solutions' liability exceed the price paid for the product from direct, indirect, special, incidental, or consequential software, or its documentation. Kanguru Solutions offers no refunds for its products after 30 days of purchase. Kanguru Solutions makes no warranty or representation, expressed, implied, or statutory, with respect to its products or the contents or use of this documentation and all accompanying software, and specifically disclaims its quality, performance, merchantability, or fitness for any particular purpose. Kanguru Solutions reserves the right to revise or update its products, software, or documentation without obligation to notify any individual or entity.

Kanguru Solutions
1360 Main St., Millis, MA 02054
508.376.4245 • Fax 508.376.4462
www.kanguru.com

Table of Contents:

USER'S MANUAL	1
INTRODUCTION:	4
PACKAGE CONTENTS:.....	4
FEATURES:	4
SYSTEM REQUIREMENTS:	5
HARDWARE:	5
OPERATING SYSTEM:	5
SPECIFICATIONS:	5
DRIVER INSTALLATION	6
USB 2.0:	6
<i>Windows ME / 2000 / XP / Vista</i>	6
<i>Macintosh 8.6 and later</i>	6
FIREWIRE:.....	7
ESATA:.....	7
DISCONNECTING THE QS2 HARD DRIVE:	8
USB 2.0/FIREWIRE:	8
ESATA:.....	8
<i>Windows 2000 / XP / Vista</i>	8
BOOTING FROM THE QS2 VIA ESATA	9
BIOS SETTINGS:.....	9
<i>Embedded Serial ATA Controller:</i>	9
<i>Add-on Serial ATA Controller Card:</i>	9
INSTALLING WINDOWS 2000/XP ONTO THE KANGURU QS2:	9
PARTITIONING AND FORMATTING	10
PARTITIONING	10
FORMATTING.....	11
USAGE NOTES	11
<i>eSATA Hot Swappable Functionality</i>	11
WARRANTY	12
TECH SUPPORT	12

Introduction:

Thank you for purchasing the Kanguru QS2 hard drive from Kanguru Solutions!

The Kanguru QS2 features the latest in external hard drive technology with cutting edge SATA connectivity for the fastest throughput. The QS2 can take on your most demanding data transfer tasks with ease! Video streaming, photo editing and production, large-scale database access, the QS2 can do it all! In addition to an eSATA connection (Q2S & Q2T models only) and Firewire connection (Q2T models only), the QS2 is also equipped with a high speed USB2.0 connection for quick and easy connectivity to both PC's and Mac's without a eSATA or Firewire port.

Package Contents:

- 1 – Kanguru Solutions QS2
- 1 – USB 2.0 Cable
- 1 – Firewire Cable (Q2T models only)
- 1 – eSATA Cable (Q2S & Q2T models only)
- 1 – Vertical Stand
- 1 – AC Power Supply
- 1 – Manual & Driver's CD
- 1 – User Registration Form

If any of the above items are missing, please contact the Kanguru Solutions Technical Support Department at: (508) 376-4245 and replacement parts will be shipped ASAP.

Features:

- Various capacity drives available (80GB – 1 TB)
- USB 2.0 & eSATA (Q2S models only) interface
- USB 2.0, eSATA & Firewire (Q2T models only) interface
- Supports SATA II (Q2S & Q2T models only)
- Newly designed alloy/aluminum case for better heat dissipation
- Front status LED
- Able to be set up horizontally or vertically
- Lightweight and durable design
- Plug and play compatible
- Hot swappable
- Supports Windows ME/2000/XP/Vista/7 & Mac OS 9/X and Later.

System Requirements:

Hardware:

- Notebook or desktop computer
- 256MB RAM
- Pentium II processor or equivalent
- 1 – USB1.1 or USB2.0 port
- 1 - eSATA port (Q2S & Q2T models only)
- 1 – Firewire port (Q2T models only)
- 1 Available wall outlet for power

Operating system:

- WinME/2000/XP/Vista/7
- Mac OS 8.6 or Later

Specifications:

General:	
Model Number	Q2U (USB2 only), Q2T (USB2/eSATA/Firewire Combo), and Q2S (USB2/eSATA Combo) Series
Interface	USB 2.0 (Backwards compatible with USB 1.1) Firewire 400 (Q2T models only) eSATA (Q2S & Q2T models only)
Capacities	Various (80GB – 1TB)
Rotational Speed	7,200 RPM
Hard Drive Interface	SATA
Access Time	8.5 - 11 ms (Internal)
Reliability	750,000 Hrs
OS Compatibility	USB 2.0 <ul style="list-style-type: none">• Windows ME• Windows 2000• Windows XP• Windows Vista• Windows 7• Mac OS 8.6 or later FIREWIRE <ul style="list-style-type: none">• Windows ME• Windows 2000• Windows XP• Windows Vista• Mac OS 8.6 or later

	SATA <ul style="list-style-type: none"> • Windows ME • Windows 2000 • Windows XP • Windows Vista • Mac OS X 10.2 or later
Size:	
Weight	2.15 LBS
Dimensions	7-3/4" x 4-1/2" x 1-3/8"

Driver Installation

USB 2.0:

Windows ME / 2000 / XP / Vista

None of the Kanguru QS2 hard drives require any driver files for Win ME, Win2000, Win XP or Windows Vista. These operating systems include a USB Mass Storage driver, which will support all Kanguru QS2 hard drives.

Simply plug in the Kanguru QS2 into the USB 2.0 port and Windows will automatically detect the new hardware and install the appropriate driver.

When the installation has completed successfully, you will find a "Removable Disk" drive icon showing in the "My Computer" screen.

Macintosh 8.6 and later

If you are using Mac OS 8.6, you must install Mass Storage Support 1.3.5. This file is included in the Kanguru drivers & manuals CD, but may also be downloaded from the Apple Software Updates website at <http://www.apple.com/support>.

You do not need to install any USB drivers if you are using Mac OS 9.0 or later.

Notice: The Kanguru hard drive icon may take up to 10 minutes to initially appear on your desktop. If you are solely using your drive with Macs, please format your drive as a Mac Hard Drive to avoid this delay.

Firewire:

There are no drivers needed for the Firewire Kanguru QS2 drives in any of the operating systems. The drives are compatible in ME, 2000, XP, Vista and 7, as well as Mac 8.6 and above.

Notice: The Removable Drive icon will only appear on your desktop when the QS2 is connected to the computer and powered on via the external power supply. The Kanguru Hard Drive icon may take up to 10 minutes to initially appear on your desktop. If you are solely using your drive with Macs, please format your drive as a Mac Hard Drive to avoid this delay.

If you continue to experience issues, please restart your computer.

If you are still having trouble please make sure your Mac OS have the following extensions:

- Firewire Authoring Support
- Firewire Enabler
- Firewire Support

eSATA:

Installing Drivers for Windows ME/2000/XP/Vista/7:

The above operating systems do not require any additional driver installations. Your computers Serial ATA controller will automatically install a default driver for the Kanguru QS2 hard drive.

After the system has detected the drive and installed the necessary drivers, double-click on the "My Computer" icon to verify the drive has been added to your system.

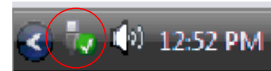
Notice: Most Serial ATA controllers support Plug & Play for external SATA (eSATA) devices. If your Serial ATA controller does not support plug & play, please contact the manufacturer of your controller to obtain and update and/or fix.

Notice: The Kanguru QS2 hard drive icon may take up to 10 minutes to initially appear on your desktop.

Disconnecting the QS2 Hard Drive:

USB 2.0/Firewire:

Windows ME/2000/XP/Vista/7 users: Click on the green Remove Hardware icon on the right side of the taskbar and select the USB Mass Storage Device to safely remove the drive.



Notice: If you do not properly remove the drive from your system, then you may have to reboot your computer in order for the drive to be recognized again.

Mac: When removing the drive from your Mac, close all windows and quit all applications that are stored on the QS2 and drag the drive's icon to the Trash/Eject to remove the drive from your computer.

Do not unplug the QS2 from your computer while copying files to or from the drive or while applications or files stored on the drive are in use. Doing so may result in data loss or damage to the drive.

eSATA:

Windows 2000 / XP / Vista

1. Right click on the **My Computer** icon and click properties
2. Click on the **Hardware** tab and click on the **Device Manager** button
3. Double click on **Disk Drives**
4. Right click on the device labeled **SCSI Disk** and select **Uninstall**
5. When the confirm dialog appears, click '**OK**' to remove the device
6. It is now safe to unplug the device from your computer

Booting From the QS2 via eSATA

BIOS Settings:

If your computer's Serial ATA controller supports booting, you may boot from the Kanguru QS2.

Embedded Serial ATA Controller:

You may need to enter the BIOS setup for your motherboard to change the boot sequence so the SATA controller is the first boot device. In most cases, if your controller is built into your motherboard (not an add-on controller card), the BIOS will have an option to choose the SATA controller as the initial boot device. Please consult your motherboard manual on how to change the boot order for your computer.

Add-on Serial ATA Controller Card:

If your SATA controller is an add-on controller card, you may try to choose the SCSI device as the first boot device. If your system does not have this option available, your BIOS may not allow the SATA controller to be designated as a boot device at the BIOS level. In such cases, you may be able to boot the QS2 if there is no bootable EIDE drive installed in the system.

Installing Windows 2000/XP onto the Kanguru QS2:

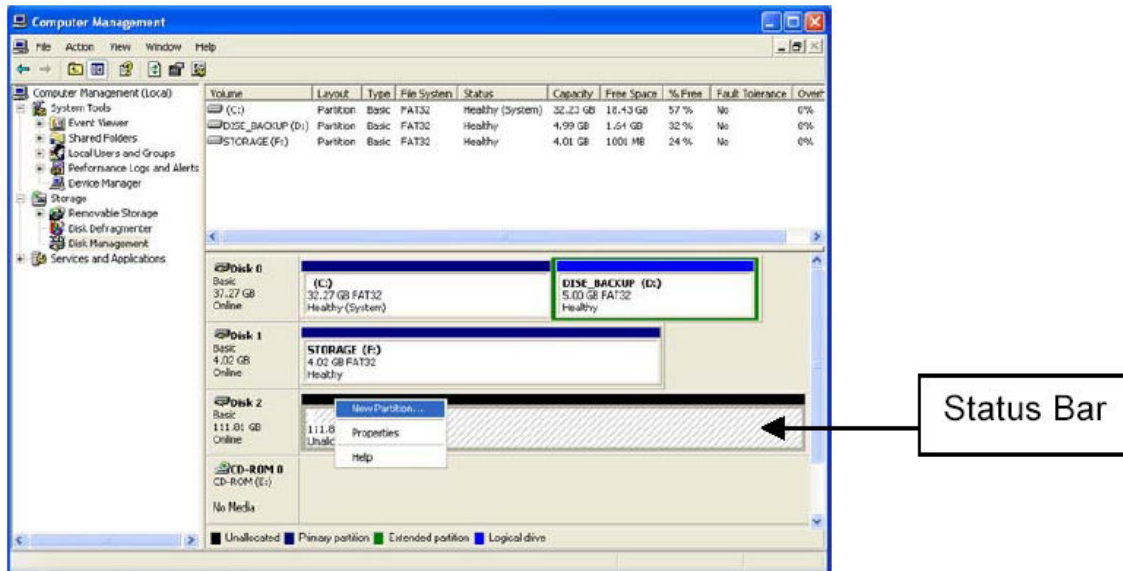
Insert the Windows 2000/XP CD into your CD-ROM drive and have your computer boot from the CD. When the Windows installation screen appears, press F6 to have setup install Third Party Mass Storage controllers. You will be prompted to install the drivers that were supplied by your Serial ATA controller manufacturer. After installing the drivers, Windows setup should detect the drive and allow Windows to be installed. Follow the instructions onscreen to finish the installation for Windows.

Partitioning and Formatting

Partitioning

Partitioning allows you to take one large drive and make it into multiple smaller drives. Partitioning requires formatting the drive and will erase all data if any exists on the drive.

1. To partition the QS2, plug the drive into your computer, then right click on the **My computer** icon (this icon may also be located in the Start Menu on some Windows XP) systems and choose **Manage** to open **Computer Management**.
2. Locate **Disk Management** below the **Storage** submenu on the left side of the window. The right side of the window will update, showing you a list of all the drives connected to your system.
3. Locate the Kanguru QS2 in the bottom half of the Window. In order to partition the drive you will have to delete the current partition by right clicking on the status bar (see below) to the right of the disk and choosing **Delete partition**. Next to create a new partition, right click on the status bar and choose **New Partition**.



4. The **New Partition Wizard** will appear to create the new partition. Follow the on screen instructions to complete the partition and formatting process.

Formatting

Notice: Formatting the drive will erase all data contained on the drive

1. To format the QS2, plug the drive into your computer, then open **My Computer** and right click on the drive letter associated with the QS2 and choose the **Format** option
2. Choose the file system that you would like to format the drive in.
3. Enter a **Volume Label** in the text box (optional).
4. Check the **Quick Format** box to perform a quick format. You can leave it unchecked to have it perform a full format (Full Format will take longer to complete).
5. Click **Start** to begin the format process. Once the process is complete, you can then resume accessing and copying data to and from the drive.

Notice: When formatting with FAT32 on Windows 2000 Win XP or Windows Vista there is a 32GB hard drive size limitation. In order to format a drive larger than 32GB, you would need to partition it or use a Windows 98 system to format it.

Usage Notes

Once the driver files have been loaded simply plug in the USB2.0 or eSATA (Q2S & Q2T models only) cable into the back of the drive and then into your system. Turn on the power to your drive and you will see a new Removable Drive icon in My Computer.

eSATA Hot Swappable Functionality

The Kanguru QS2 is hot swap compatible. However, based on your computers' settings, several tasks may need to be performed in order to view the QS2. Please do the following to rescan for newly connected eSATA devices:

1. Right click on the **My Computer** icon and click **Manage**
2. From the list on the left side of the window, select **Device Manager**
3. Now, on the right side of the window, there will be a list of devices.
4. **Right Click** on your computer name, it should be at the very top.
5. Click **Scan for hardware changes**
6. Wait for the scan to complete and then check the **My Computer** screen again to see if the Kanguru QS2 has been recognized by the computer.

If this does not find the Kanguru QS2 via eSATA connection, the computer may need to be restarted.

Warranty

Kanguru Solutions guarantees that every Kanguru QS2 enclosure will be free from defects in workmanship and materials for 1 year from the date of purchase. It guarantees the Hard Drive installed in the device for 3 years. This warranty does not apply if, in the judgment of Kanguru Solutions, the product fails due to damage from handling, accident, abuse, misuse, or if it has been used in a manner not conforming to the product's instructions, has been modified in any way, or the warranty labels have been removed. If the product proves defective during this warranty period, call Kanguru Solutions Technical Support in order to obtain a Return Material Authorization required for service. When returning a product, mark the RMA number clearly on the outside of the package, and include a copy of your original proof of purchase.

In no event shall Kanguru Solutions' liability exceed the price paid for the product from direct, indirect, special, incidental, or consequential software, or its documentation. Kanguru Solutions offers no refunds for its products after 30 days of purchase. Kanguru Solutions makes no warranty or representation, expressed, implied, or statutory, with respect to its products or the contents or use of this documentation and all accompanying software, and specifically disclaims its quality, performance, merchantability, or fitness for any particular purpose. Kanguru Solutions reserves the right to revise or update its products, software, or documentation without obligation to notify any individual or entity.

Tech Support

If you experience any problems installing your Kanguru QS2 or have any technical questions regarding any of our products, please call our tech support department. Our tech support is free and available Monday thru Friday, 9am to 5pm EST.

Call 1-508-376- 4245 or

visit our website at www.Kanguru.com