

Wireless Mouse with Mini Keyboard 2.4 GHz

User's Manual

Thank you for choosing the **Kanguru Solutions Wireless Mouse with Mini Keyboard 2.4GHz**. You are moments away from enjoying the convenience this device brings to your home, office or while you're on the road. This palm-sized, wireless device has three (3) unique features, including a multi-touch trackpad, mini QWERTY keyboard with multimedia playback controls, and the ability to function as a laser mouse. With superb 2.4GHz wireless technology, you can control any PC from distances up to 200 feet (line of sight). Low-power consumption gives you at least 80 hours of continual use and the internal battery can be conveniently recharged through any standard USB2.0 port.

©2011 All rights reserved.



FEDERAL COMMUNICATIONS COMMISSION

This device complies with Part 15 of the FCC Rules. Operation is subject to the following two conditions: (1) this device may not cause harmful interference, and (2) this device must accept any interference received, including interference that may cause undesired operation.

Note: This equipment has been tested and found to comply with the limits for a Class B digital device, pursuant to Part 15 of the FCC Rules. These limits are designed to provide reasonable protection against harmful interference in a residential installation. This equipment generates, uses and can radiate radio frequency energy and, if not installed and used in accordance with the instructions, may cause harmful interference to radio communications. However, there is no guarantee that interference will not occur in a particular installation. If this equipment does cause harmful interference to radio or television reception, which can be determined by turning the equipment off and on, the user is encouraged to try to correct the interference by one or more of the following measures:

- Reorient or relocate the receiving antenna.
- Increase the separation between the equipment and receiver.
- Connect the equipment into an outlet on a circuit different from that to which the receiver is connected.
- Consult the dealer or an experienced radio/TV technician for help.

Changes or modifications not expressly approved by the party responsible for compliance could void the user's authority to operate the equipment.

EU DECLARATION OF CONFORMITY

This product carries the CE-Mark in accordance with European Directives.

Package Contents

- 1x Wireless Mouse with Trackpad and Mini QWERTY Keyboard
- 1x USB Receiver (embedded in the back cover)
- 1x Rechargeable Battery
- 1x USB Charging Cable
- 1x User's Manual

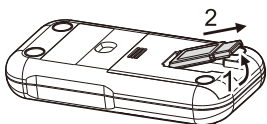
System Requirements

- Windows® XP / Vista / 7
- USB2.0 port

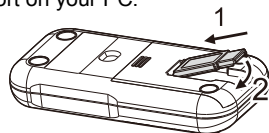
Getting Started

1. Plug the USB receiver into PC USB port

Take out the USB receiver embedded in the back cover and plug the USB receiver into a USB2.0 port on your PC.



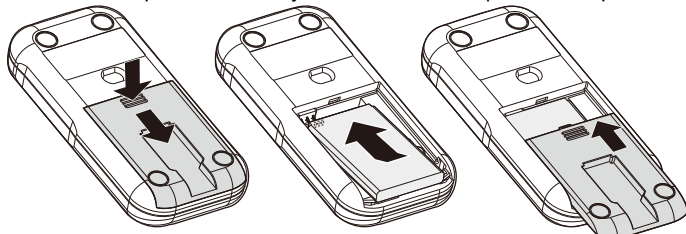
Steps for removing USB receiver



Steps for reinserting USB receiver

2. Insert the battery

Press and slide the battery cover open. Insert the battery firmly with the contact pins on the battery matching up with the ones in the device. Replace the battery cover and slide it up, back into place.



Press and slide the battery cover

Insert the battery

Replace the battery cover

Note before first use: Use the USB charging cable to charge the device for at least two (2) hours. See the next section "Low Battery Indication and Charging the Battery" for complete instructions on charging the battery.

Now you can begin using your **Kanguru Wireless Mouse with Mini Keyboard**. Please note that the device is set in the multi-touch trackpad mode by default. For details on changing the mode and other operations, please read the following section "General Operation".

Low Battery Indication and Charging the Battery

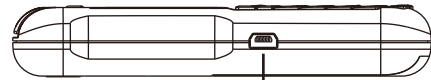
• Low battery indication

When battery power is at low capacity, the indication LED will light up red anytime you press a key, button or the trackpad. Please charge the battery immediately.

• Charging the battery

Connect the supplied USB charging cable between this product and a USB port on your PC to charge the battery. The red indication LED will blink while charging. The indication LED will turn off once the battery is fully charged.

Note: Battery charge time depends on remaining battery power, operation condition and working environment, etc. The rechargeable battery has a limited number of charging cycles. When you find that you need to frequently recharge the battery, you may need to replace the rechargeable battery.



Connection port for USB charging cable

ID Pairing

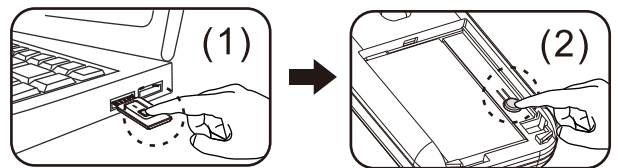
You do not need to conduct ID pairing when you use this product, **UNLESS the following situation occurs: Battery is charged, the device and USB receiver are within connection distance but the product does not work or when you want to use more than one of these devices in the same location at the same time.**

In such cases, you may need to conduct ID pairing to prevent interference.

(1) Click the ID Link button on USB receiver. The red LED will light up and it will enter into **20-second** ID pairing, stand-by time.

Note: If you press the ID Link button again during 20-second stand-by time, the ID pairing action will be cancelled.

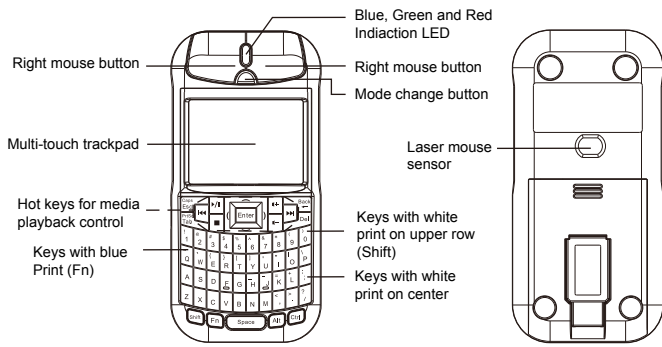
(2) Within the 20-second stand-by time, press the pairing button in the device's battery compartment until the red LED on the USB receiver blinks 3 times. Three blinks means the ID pairing was successful.



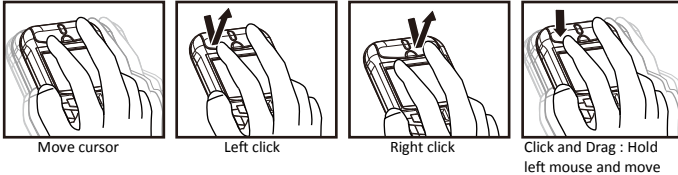
Specifications

Frequency	2400 ~ 2483 MHz
Channel number	16
ID number per Channel	65,535
Modulation	GFSK
Antenna type	PCB track
Wireless range	Up to 200 feet (line of sight)
Working voltage	DC 3.0V ~ 3.8V
Battery	BL-5C 850mA-hour Li-Ion rechargeable battery
Transmission power	1mW
Power consumption / Battery continuous operation hours	Standby : 0.4mA / 2125 hour
	Keyboard mode : 1mA / 850 hours
	Multi-touch trackpad mode : 10mA / 85 hours
	Laser mouse mode : 30mA / 28.3 hours
Weight	3.25oz (including BL-5C battery and USB receiver)
Dimension	Approximately 4.5" (L) x 2.2" (W) x 0.8" (H)
Operation temperature	32°F(0°C)~140°F (60°C)
Operation humidity	10%~85%

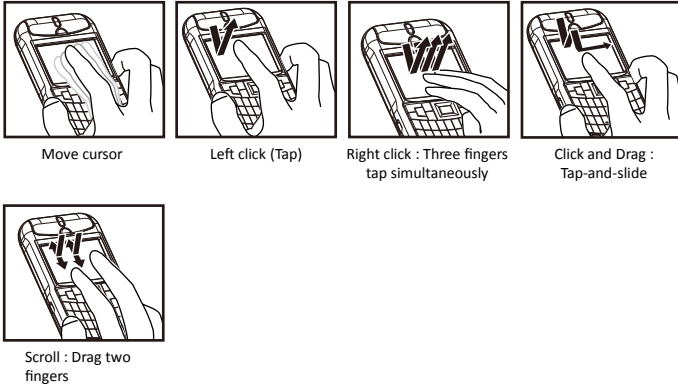
General Operation



Laser mouse operation



Multi-touch trackpad operation



1. Laser mouse mode (Blue indication LED)

While in Laser mouse mode, the device operates like a standard optical mouse. Several trackpad functions are still available.

Function	Operation
Mode change button	<ul style="list-style-type: none"> Press and hold the mode change button until the indication LED turns white to turn off mouse functionality. Click the mode change button again to turn on the mouse function in the default multi-touch trackpad mode Note: Keyboard functions are still available even when mouse functionality is turned off. When the mouse function is activated, click the button to switch modes between Laser mouse and Multi-touch trackpad modes
Blue indication LED	Lights up when mouse moves or trackpad is used
Cursor move	Place mouse on a flat surface and move as you would any mouse
Left click	Press the left mouse button or single tap the trackpad
Right click	Press the right mouse button or tap the trackpad using three fingers
Mouse drag	Press and hold the left mouse button while moving the mouse
Scroll	Hold two fingers to the trackpad and then drag your fingers up or down
Mouse dpi setting	Press and hold the Fn key and then click the mode change button to change mouse dpi setting between 1700, 2500 and 3400 Note: The mouse dpi setting can only be changed while in Laser mouse mode. Default dpi is set to 3400. Remove and reinsert the battery to reset the mouse dpi setting to the default setting.

2. Multi-touch Trackpad mode (Green indication LED)

When in Multi-touch Trackpad mode, the left and right mouse buttons functions are still available.

Function	Operation
Mode change button	See Mode change button in the section <i>Laser mouse mode</i>
Green indication LED	Lights up when the trackpad is used
Cursor move	Move a finger across the trackpad
Left mouse click	Press the left mouse button or single tap the trackpad
Right mouse click	Press the right mouse button or tap the trackpad using three fingers
Mouse drag	Tap and slide your finger across the trackpad
Scroll	Hold two fingers to the trackpad and then drag your fingers up or down

3. Presentation control device

Use this device during your next PowerPoint slide show as a wireless presentation remote. Use the following keys and buttons to wirelessly control your presentation.

Key or button	Operation
Fn + 5	Press and hold Fn , and then press the 5 key to execute an F5 function to start the slide show
Caps/ Esc	Press this key to exit the slide show
Left mouse button or \curvearrowright or \curvearrowleft	Click the left mouse button or press the \curvearrowright or \curvearrowleft key to advance to the next slide
\curvearrowleft or \curvearrowright	Press the \curvearrowleft or \curvearrowright key to go back to previous slide
B key	Press the B key to turn the whole screen black. Press it again to return to the slide show.
W key	Press the W key to turn the whole screen white. Press it again to return to the slide show.
Alt + Tab	Press and hold the Alt key and then press the Tab key to navigate through any open windows. Release both the Alt and Tab keys to switch to the selected window.

4. QWERTY Keyboard – always functional

The Mini keyboard is always functional, no matter what mode the device is set in.

Key print	Function and Operation
White print in the center	Press the key to input character
White print on the upper row	Press and hold the Shift key and then press the key to input the secondary character
Blue print on the upper row	Press and hold the Fn key and then press the key to input the secondary character/function
F1~F10 function	Press and hold the Fn key and then press the corresponding numerical key (1~10) to execute F1~F10 function
Multimedia playback controls	While running a Multimedia playback application, press any one of these keys to execute the displayed function.

Note: The 4 arc-shape keys surrounding the Enter key have the same function as the 4 directional keys i.e. “ \rightarrow \leftarrow \uparrow \downarrow ” on a keyboard.

Note: The “**Alt**” key is normal Alt function, not Alt-Gr function. You can press “**Ctrl+Alt**” together to execute the Alt-Gr function.

Note: The following 8 keys have a repeated function when they are press and held: **Back, Del, \leftarrow , \rightarrow** and the 4 arc-shape keys (\curvearrowright \curvearrowleft)

FAQ

Q1. Do I need to install driver software for this product?

A1: This is a Plug-and-Play product. No additional drivers are needed.

Q2. Why is the trackpad not operating smoothly?

A2: The trackpad is sensitive to moisture. For optimal performance please keep your fingers dry when using the trackpad.

Q3. Why can't I control the laser mouse, trackpad and keyboard?

A3: Poor functionality can be caused by a) low battery or b) interference caused by another 2.4GHz product. The device may need to be charged or the ID needs to be paired.

Q4. How can I check the value of the mouse dpi?

A4: There is no way to check the mouse dpi. You can remove and reinsert the battery to reset the mouse dpi to the default 3400.