

RocIT drive comes preconfigured with a single virtual machine (VM), containing a demo version of Windows XP. Perform the following steps to replace XP or install another VM on your drive, refer to *RocIT Defender User's Guide* for additional instructions on adding and managing virtual machines.

1. Boot the computer into the **ViSoS Authenticator**.
2. Insert the new operating system installation disc into the CD/DVD drive, wait for it to spin up, and then login to the drive.
3. The system will then boot to the operating system installation disc.
4. Follow the instructions to complete the installation and activation of the new operating system.
5. From the new VM, select **Machine Taskbar Menu — Devices —> Install Guest Additions**. This will install extra features that improve the performance between the guest operating system and the ViSoS Runtime Environment.
6. Follow the on screen instructions within the **Guest Additions Setup Wizard**.
Note: Windows will respond with several warnings about hardware that has not passed Windows logo testing. Select <Continue Anyway> on these warnings.

Windows Activation

Windows XP is shipped with a demo license that is preloaded on the drive. If the hardware on the computer changes significantly it will require reactivation. Please follow the on-screen directions for Windows reactivation.

Warranty Information

This product carries a 1-year warranty from the date of purchase. Kanguru Solutions is not responsible for any damages incurred in the shipping process. Any claims for loss or damage must be made to the carrier directly. Claims for shipping errors should be reported to Kanguru Solutions within three (3) working days of receipt of merchandise.

Specifications

Weight: 10 grams

Power Requirements: 266 mA

Type: 256-bit AES Hardware encrypted USB drive
US DoD DIACAP Certified
Tamper Resistant

Capacity: 16 GB - 32GB

Contact Information

Sales: 1-888-526-4878

Headquarters: 1-508-376-4245

Fax: 1-508-376-4462

Technical Support: (800) 603-3589

Support: techsupport@absolute-id.com



RocIT™ DEFENDER QUICK START GUIDE

Package Contents

- Kanguru RocIT Defender Flash Drive
- Quick Start Guide
- Registration Form
- Lanyard
- USB Extension Cable

Minimum System Requirements

- X86-based processor
- 2 GB memory
- USB 2.0 port
- LAN/WAN Card: 10/100baseT support

Recommended System Requirements

- 1.6 GHz dual core processor
- 4 GB memory
- 2 USB 2.0 ports

Introduction

Thank you for choosing the Kanguru RocIT Defender USB drive, the world's premium, secure, mobile computing platform

This device provides the ultimate in convenience, portability and security. Utilizing a bootable, hardware encrypted, tamper-proof architecture, your new drive can be connected to a computer and run completely independent from that system, thereby providing an autonomous and secure solution that will leave no trace on the host system after running it.

The drive comes equipped with a Windows XP virtual machine (demo version) which is integrated within a Virtual Machine Manager. A virtual machine (VM) is a special environment that is created for a "guest" operating system (OS) while it is running. In other words, the guest operating system is run "within" a virtual machine.

The license may be activated and/or another operating system may be installed and activated. The drive supports 32 bit Windows XP, Vista and Windows 7, as well as several flavors of Linux.

Caution! The through-hole at the bottom of the drive is designed for use with the provided lanyard only.

1 Setup BIOS System to boot from USB

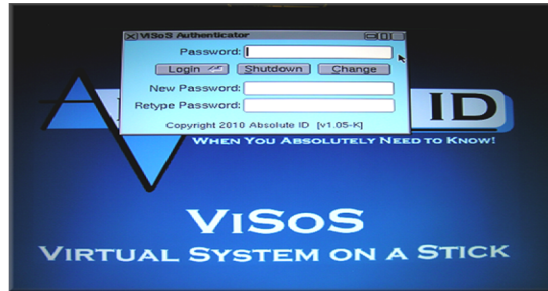
The host computer system must first be configured to boot from a USB storage device in order to run your new drive.

1. Turn on the host computer system.
2. Watch the screen and look for a message on how to enter the system BIOS. Press the Pause key if it goes by too fast to read.
3. Press the designated key to enter the BIOS (usually **ESC**, **DEL**, or a function key such as **F1** or **F2**).
4. Set the computer to enable booting from USB drives or ports.
5. Set the boot order to boot from USB prior to booting from the hard drive.
6. Save and exit the system BIOS and reboot.

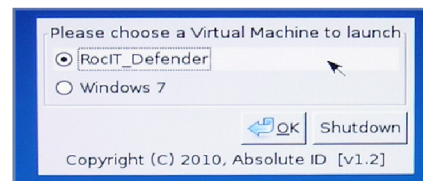
2 Boot RocIT Drive

Once the BIOS has been set up, the RocIT Drive is ready to boot.

1. Turn off the host computer system.
2. Insert the RocIT Drive into an available USB 2.0 slot.
3. Power the system on.
4. A dialog titled **ViSoS Authenticator** will be displayed. Enter the drive password, and hit **<Enter>** or click the **<Login>** button.
Note: the default password is "password".
5. On initial drive authentication, the End User Licensing Agreement (EULA) will be displayed. Press the **<Accept>** key to accept the EULA.
6. A dialog will be displayed with a message: **"Booting ViSoS"**, and the system will start.
7. The ViSoS Runtime Environment (VRE) will then boot from the secure, encrypted partition, and the RocIT Defender's default operating system (Windows XP) will be launched.
8. If multiple operating systems have been loaded on the RocIT Defender drive, then the following dialog will be displayed providing a choice of which VM to run.



The RocIT Defender drive is now ready to begin normal operation.



3 Changing the Drive Password

Follow these steps to change the password on the RocIT Drive:

1. At the ViSoS Authenticator screen, enter the drive password into the **"Password"** field. The default password is: **"password"**.
2. Enter a new password into the **"New Password"** field, and then confirm it by entering it again in the **"Retype Password"** field.
3. Click on the **<Change>** button to change the drive password. *Note: If the <Enter> key is pressed instead of <Change>, the drive will start but the password will not be changed.*

4 Attaching USB Devices and Printers

After Windows has booted, additional USB devices, such as printers or external media, may be attached to the running VM with the following procedure:

1. Hover over the bottom of your Windows screen and a **Taskbar Menu** will appear.
2. Select the **Devices** —> **USB Devices** menu option and select the device to attach.

Note: a check mark will be displayed beside devices that are currently attached.

3. Once the device is attached, it will be recognized by Windows and Windows will prompt to install the necessary drivers.

The device is now ready to use from within the selected virtual machine.



IMPORTANT: Do not attach the Kanguru Defender drive. This will crash the system.

5 Connecting to the Network

The drive is preconfigured to connect to any wired networks. Network connectivity is managed by the ViSoS Runtime Environment (VRE). Refer to the *RocIT Defender User's Guide* for instructions to connect to wireless networks and advanced network setup and configuration