

Kanguru BioAES™

User Manual



User Manual v1.0

Copyright Kanguru Solutions - 2008

Kanguru BioAES – User Guide

Table of Contents

Table of Contents	1
1. Notices and Warranty Information.....	2
2. Introduction	3
3. Kanguru BioAES Drive	3
4. Features	4
5. Specifications.....	5
6. Package Contents	6
7. System Requirements	7
8. Installation	7
9. Getting Started	8
5.1 Starting Kanguru BioLock	8
9.2.1. <i>Setup Wizard</i>	10
9.2.2. <i>Setting up a password</i>	10
9.2.3. <i>Fingerprint Registration</i>	12
10. Working with Kanguru BioLock Software.....	15
10.1. Encrypting files and folders.....	17
10.2. Security settings	19
10.2.1. Password Settings.....	20
10.2.2. Fingerprint Settings	20
11. Safely remove hardware.....	21
12. Tech Support.....	21

1. Notices and Warranty Information

Please be aware of the following points before using the Kanguru BioAES

Copyright© 2008, Kanguru Solutions. All rights reserved.

DOS[®], Windows 95[®], Windows 98[®], Windows NT[®], Windows 2000[®], Windows ME[®], Windows XP[®], and Windows Vista[®] are registered trademarks of Microsoft Inc. Apple[®] and Macintosh[®] are registered trademarks of Apple Computer Inc. IBM and OS/2 are registered trademarks of the International Business Machines Corporation. All other brand or product names are trademarks of their respective companies or organizations.

Kanguru Solutions will not be held responsible for any illegal use of this product nor any losses incurred while using this product. The user himself is responsible for the copyright laws, and is fully responsible for any illegal actions taken.

EXPORT LAW COMPLIANCE

Regardless of any disclosure made to Kanguru Solutions pertaining to the ultimate destination of the specific Kanguru product, you warrant that you will not export, directly or indirectly, any Kanguru Product without first obtaining the approval of Kanguru Solutions and the appropriate export license from the Department of Commerce or other agency of the United States Government. Kanguru has a wide range of products and each product family has different license requirements relative to exports.

CUSTOMER SERVICE

To obtain service or technical support for your system, please contact Kanguru Solutions Technical Support Department at 508-376-4245, or visit www.Kanguru.com for web support.

LIMITED WARRANTY

Kanguru Solutions guarantees that every Kanguru BioAES will be free from defects in workmanship and materials for 3 year from the date of purchase. This product carries a *3 year limited warranty on all internal components. The warranty does not cover any USB cables, or other devices used in conjunction with the Kanguru BioAES. This warranty does not apply if, in the judgment of Kanguru Solutions, the product fails due to damage from handling, accident, abuse, misuse, or if it has been used in a manner not conforming to the product's instructions, has been modified in anyway, or the warranty labels have been removed. If the product proves defective during this warranty period, call Kanguru Solutions Technical Support in order to obtain a RMA required for service. When returning a product, mark the RMA number clearly on the outside of the package, and include a copy of your original proof of purchase.

In no event shall Kanguru Solutions' liability exceed the price paid for the product from direct, indirect, special, incidental, or consequential software, or its documentation. Kanguru Solutions offers no refunds for its products. Kanguru Solutions makes no warranty or representation, expressed, implied, or statutory, with respect to its products or the contents or use of this documentation and all accompanying software, and specifically disclaims its quality, performance, merchantability, or fitness for any particular purpose. Kanguru Solutions reserves the right to revise or update its products, software, or documentation without obligation to notify any individual or entity.

Kanguru Solutions

1360 Main St., Millis, MA 02054

P: 508.376.4245 • F: 508.376.4462

www.kanguru.com

2. Introduction

The Kanguru BioAES™ is a biometric 256-bit AES encrypted USB flash drive. It helps keep sensitive data secure and available wherever you may be.

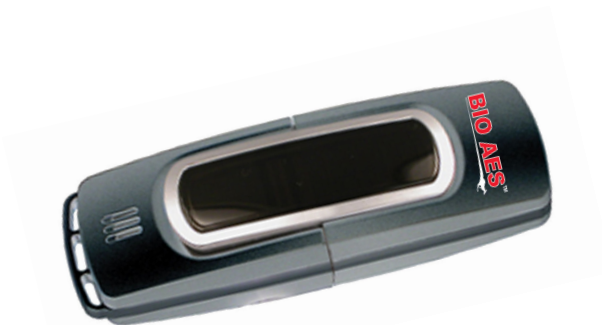
With the **Kanguru BioAES** drive you can:

- Copy & encrypt your data using AES 256 Bit encryption.
- Secure all the data by using fingerprint and password protection.

Warning

While using Kanguru BioAES, you should never disconnect the USB drive without closing Kanguru BioLock interface properly first. Do this via the exit button and then use the “Safely Remove Hardware” option in Windows (see description within this manual).

3. Kanguru BioAES Drive



The Kanguru BioAES is a compact biometric 256-bit AES encrypted USB flash drive. Two-factor authentication makes it one of the most secure ways to transport your data. The Kanguru BioAES uses a biometric sensor that will recognize up to 10 fingerprints or thumbprints and only after an authorized fingerprint is confirmed and the correct password is entered can a user access the confidential information.

The Kanguru BioAES, although sophisticated in design and technology, is very easy to use. The Bio AES comes with a user friendly setup wizard that walks you through the password setup and fingerprint scanning process. As an added benefit, all saved passwords, fingerprints, as well as the security program itself are stored directly on the drive. It can be used with most Windows platforms and you never have to install anything to use it meaning no administrator privileges are required!

4. Features

- High capacity internal storage
- Simple drag and drop 256bit AES data encryption
- Store up to 10 fingerprints
- Administrator privileges on the PC not necessary; works with any user level privileges.
- Application runs entirely from the Bio AES, you never have to install any software
- Device is preloaded and ready to go out of the box
- Two factor (Password + Fingerprint) strong authentication
- High Speed USB2.0 Interface
- Top grade fingerprint sensor-500 DPI
- Windows 2000/XP/Vista/7 compatible
- Custom printing available

5. Specifications

General

Model Number	AES-SB-MD Series
Interface	USB 2.0
Capacities	1GB ¹ thru 16G ²
Reading Speed	10MB/sec
Writing Speed	5MB/sec
Memory Type	Solid State Portable Storage (NAND Flash Memory)
Encryption	256 Bit AES
Fingerprint Capacity	Store up to 10 fingerprints
Fingerprint Sensor	Capacitive Slide Sensor
Sensor Resolution	500 DPI
Field Size	192 x 16 Pixels
Gray Level	265 levels (8 bits/pixel)
False Rejection Rate	1/1000
False Acceptance Rate	1/1,000,000
Allowable Rotation	+/-15°
Scanning Speed	1 sec
Matching Speed	<10ms
Write Cycles	1,000,000
Data Retention	10 yrs
OS Compatibility	- Windows 2000 - Windows XP - Windows Vista - Windows 7

Size

Weight	19g
Dimensions	85mm x 27mm x 13mm

Power

Operating Current	<120mA
--------------------------	--------

¹ Kanguru Solutions defines a megabyte (MB) as 1,000,000 bytes and

² a gigabyte (GB) as 1,000,000,000 bytes

6. Package Contents

- Kanguru BioAES USB storage device
- USB Extension Cable
- Neck Strap
- Quick Start Guide
- Registration Information

7. System Requirements

- Operating System:
 - Windows 2000 Service Pack 4
 - Windows XP Service Pack 2
 - Windows Vista
 - Windows 7
- 1 Available USB port (USB 2.0 Recommended)
- 256MB of internal DDR RAM or more better
- 500MHz internal CPU or faster

8. Installation

The Kanguru BioAES is **pre-installed** with Kanguru BioLock software, which is necessary for encrypting your files. No installation is needed on your PC.

Administrator privileges are also not necessary.

When connecting your Kanguru BioAES drive, the Kanguru BioLock application should start itself automatically.

To start the Kanguru BioLock manually, you can start the '**BioLockLauncher.exe**' file from your Kanguru BioAES device's CD-ROM partition by double clicking on the file. Alternatively, you can simply double click on the CD-ROM partition icon in My Computer to launch the BioLock application.

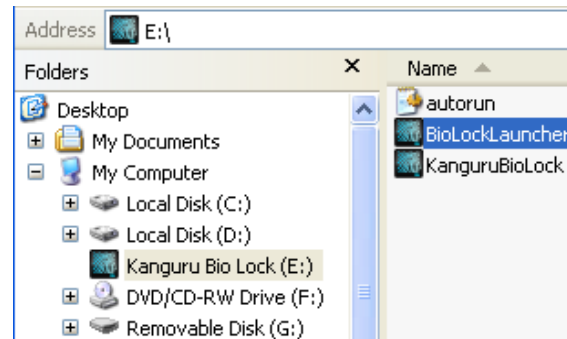
9. Getting Started

5.1 Starting Kanguru BioLock

Manually opening the BioLockLauncher.exe application is only required if the application does not auto run.

To start using your Kanguru BioAES, plug in the device to an available USB port and open **My Computer** or **Windows Explorer**.

Open the Kanguru BioAES's 'CD-ROM drive partition' with the drive letter (E: drive as pictured below) depending on your computer. Double-click on the '**BioLockLauncher.exe**' file to start the application manually.



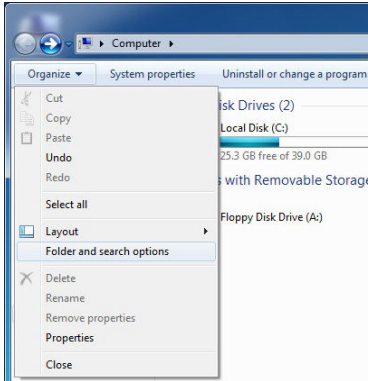
The **BioLockLauncher.exe** file will remain on the Kanguru BioAES CD-ROM partition so you can use the application when you switch between different computers without any difficulty. **Please always run the application directly from the CD-ROM partition of your Bio AES and not from the hard disk on your desktop/laptop.**

When you connect your BioAES, a CD-ROM partition and a removable disk partition should appear in My Computer. The removable disk is the Defender's secure partition. If the removable disk does not appear when you connect your BioAES, please contact Technical Support.

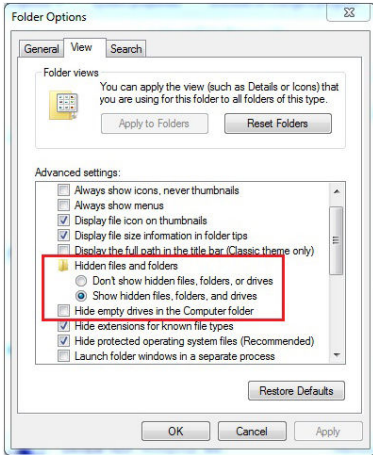
Note for Windows 7 users: Windows 7 users may not see the removable disk partition until you have logged in to BioLock. This is normal.

If you are running Windows 7 and for any reason you need to see the removable disk before you have logged in, you will need to configure Windows in the following manner:

1. From My Computer, click on the **Organize** tab and then select **Folder and search options**.



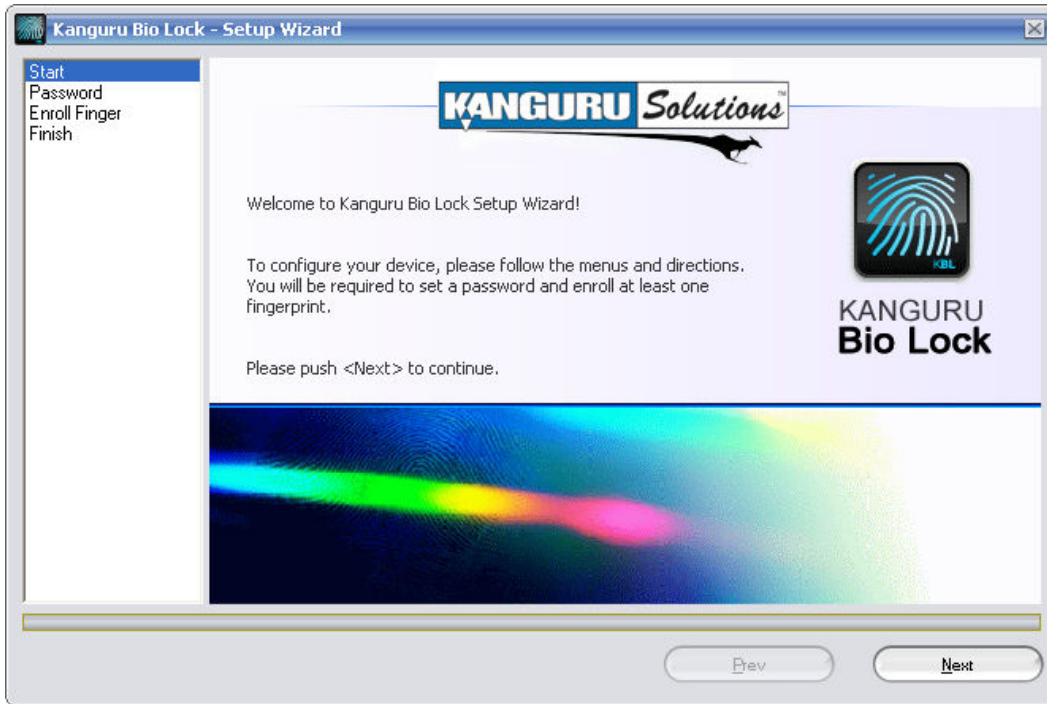
2. The Folder Options window appears. Scroll down to the option for Hidden Files and Folders and select **Show hidden files, folders, and drives**.



3. Click on the **OK** button to finish configuring Windows. The removable disk is now visible before you log into KDM.

9.2.1. Setup Wizard

When plug in your Bio AES initially, you will be greeted by the Setup Wizard.

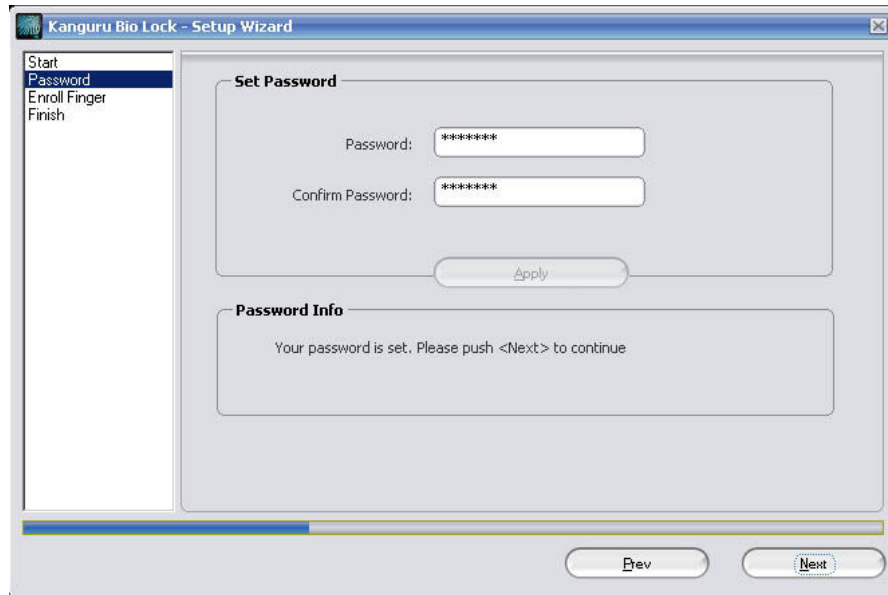


With the help of the Setup Wizard you will set up a password and fingerprint(s) to secure your data.

To begin, just follow the simple instructions and you'll be encrypting your data within minutes. The grey/blue bar at the bottom of the window above, as well as the list of steps on the top left both indicates your progress through the setup wizard.

9.2.2. Setting up a password

The password that you choose must have at least 6 characters. For security reasons, it is recommended that you incorporate upper and lowercase letters, numbers and symbols to achieve maximum security.



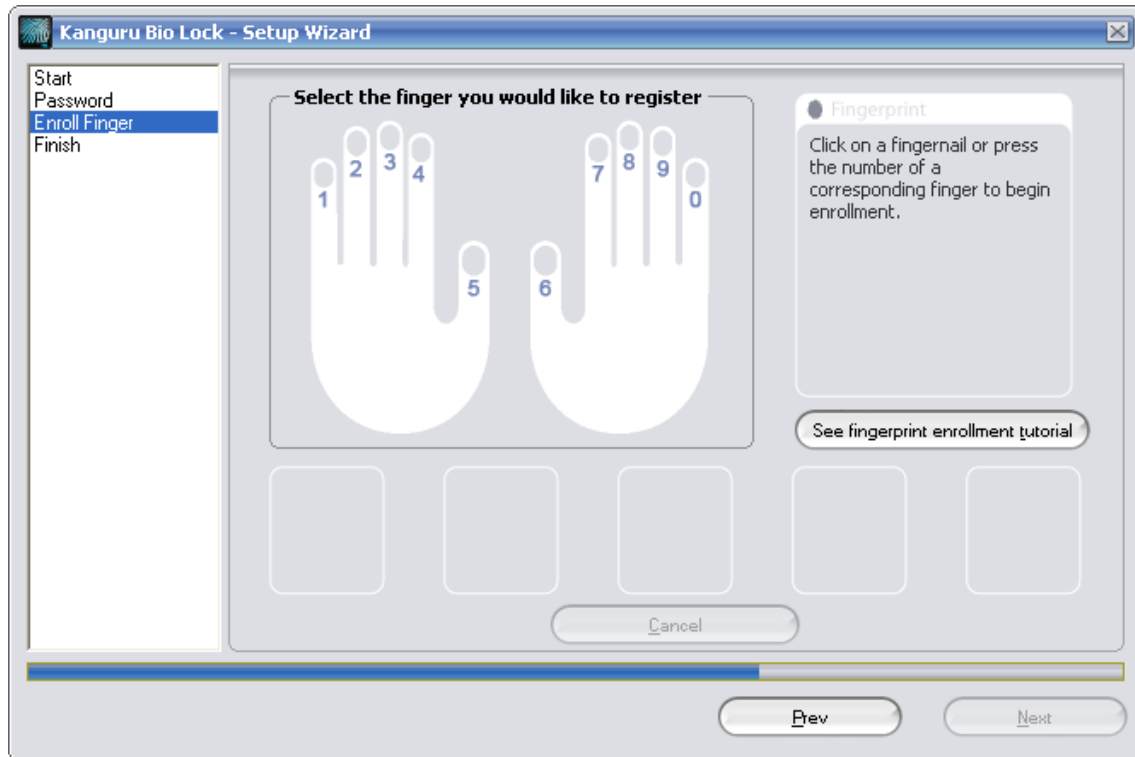
After you have entered your password in both areas, press **<Apply>**, then click the **<Next>** button to continue.

If your passwords do not match or there is any other issue with the password which you have entered in the **Set Password** section, an explanation will be visible in the **Password Info** Section below.

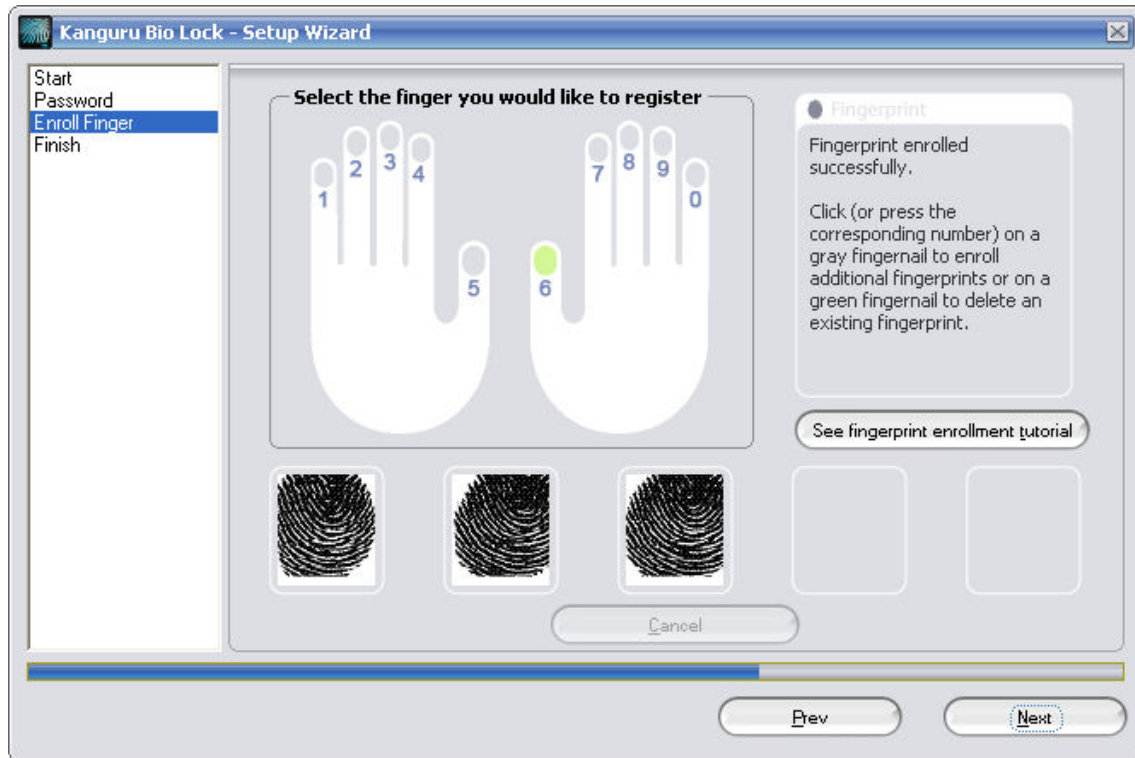
Note: The Password Info section updates in real time. It may tell you that your confirmation password is too short or does not match before you have finished re-typing the entire password. Please disregard the messages in this Info box until you are finished completing the Password or Confirm Password fields.

9.2.3. Fingerprint Registration

In order to use your Kanguru BioAES you must register at least one fingerprint. To do this, select the finger that you want to use by selecting a gray fingertip with your mouse cursor. Also you can use the number keys to select a finger instead of your mouse. When the finger is selected, the finger tip will flash dark gray and light gray.



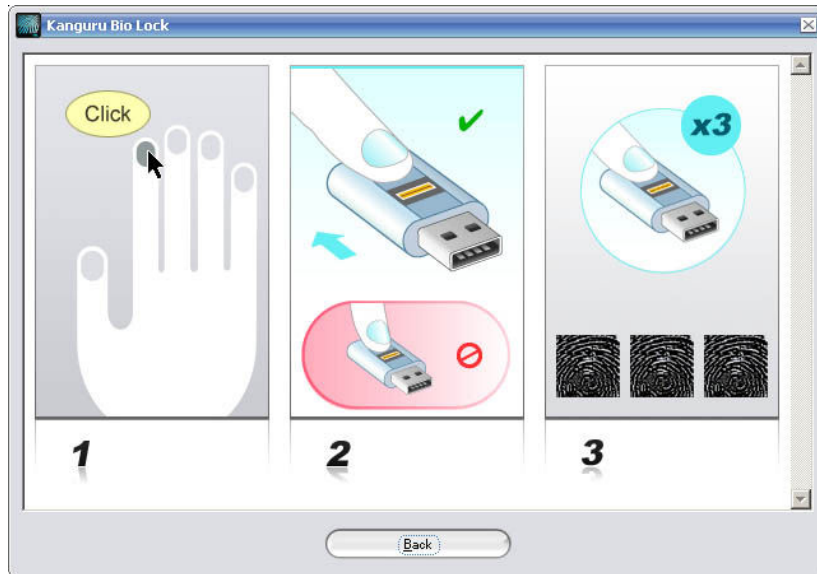
After choosing the finger for registration, you will receive a message asking you to swipe that finger over the fingerprint sensor. Swipe your finger over the sensor until you receive a message saying that the fingerprint registration was successfully completed. For the registration to be valid, you have to enter the same finger at least three times in a readable way. The Kanguru BioAES can store up to 10 fingerprints.



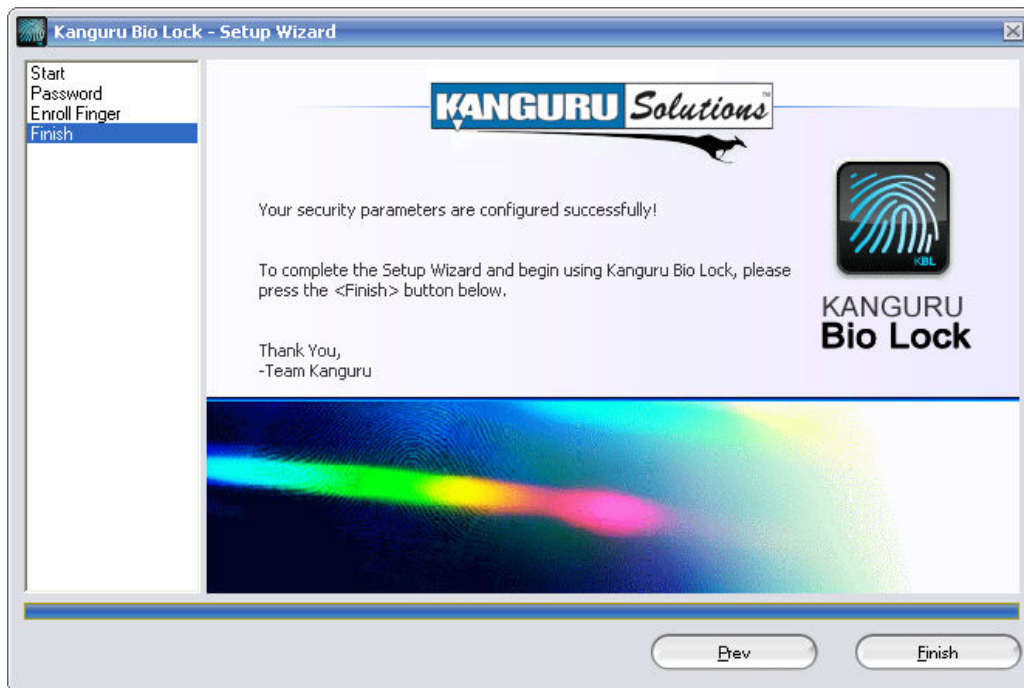
If the registration was successful then the selected finger tip will be highlighted in a neon green color and you will receive a message in the top right info box noting that the enrollment was a success.

In order to register your fingerprint in a readable way, please make sure that you swipe your finger over the fingerprint sensor in the same way (orientation) at least 3 times. The Kanguru BioAES should be lying on a flat surface (connected via the supplied USB extension cable) so you can swipe your finger aligned to the fingerprint sensor. Swiping your finger at a too steep angle against the sensor will lead to an unreadable result. Also, do not apply too much pressure to the sensor and please make sure that your fingers are dry and clean. It should take you about 1 second to swipe your finger from the top of the drive to the bottom.

The fingerprint enrollment tutorial shows a visual demonstration of how to register a fingerprint. To access the fingerprint enrollment tutorial, click the **“See fingerprint enrollment tutorial”** button located on the right sign of the **‘Enroll Fingerprint’** screen.



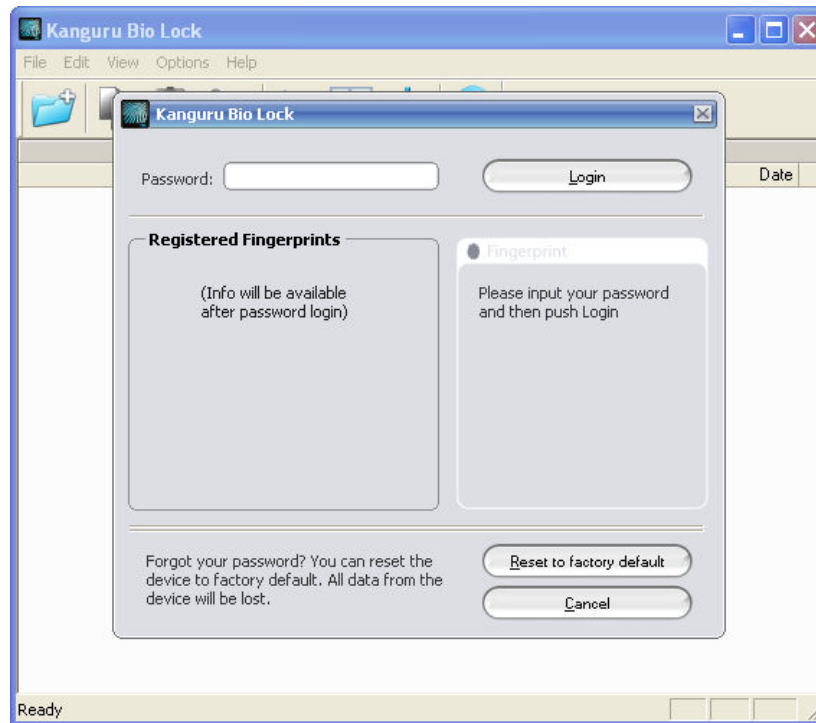
After you have successfully registered a fingerprint(s) click **<Next>**. Now the Kanguru BioAES will set up your security parameters. Once the security parameters are set, you will be guided to the final setup screen.



Click **<Finish>** to complete and close the Setup Wizard. You can cancel setup at any time. You only have to run the BioLockLauncher.exe again to bring the setup wizard back and complete setup.


10. Working with Kanguru BioLock Software

After completing the Setup Wizard the Kanguru BioLock application will start. For security reasons, you will first be asked to enter your password and then swipe an enrolled finger.



To continue, **first enter your password and press Login**, then **swipe an enrolled finger over the sensor**.

Note: if you enter your password incorrectly 7 times in a row, then your data will be automatically erased for security purposes. On the 6th attempt you will be warned of this to prevent accidental erasure of data via an onscreen message.

In the event you have forgotten your password, you can use the **<Restore to factory default>** function.  This will reset the device to factory setting;

file wiping all saved fingerprints, passwords, and data. The next time you insert your Kanguru BioAES or run BioLockLauncher.exe the setup wizard will begin.

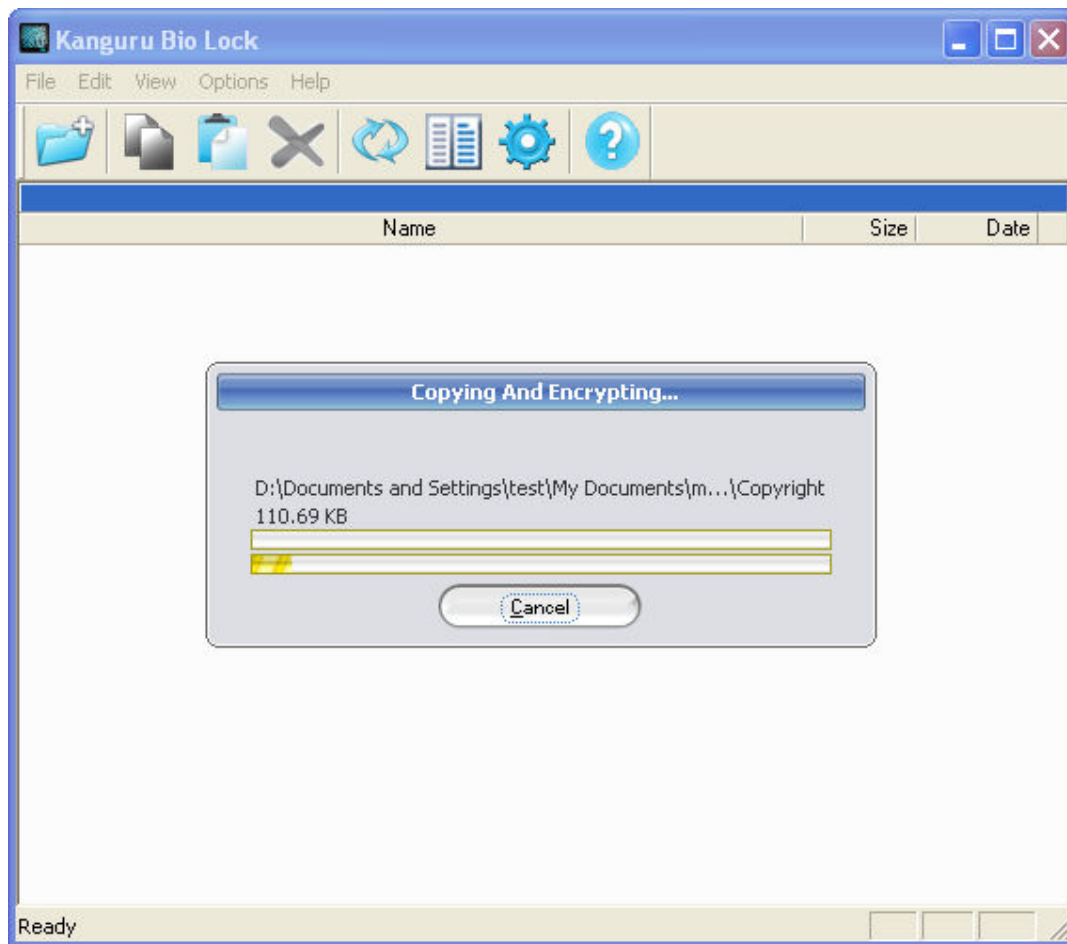
Warning!

Using the Restore to factory default function will format and wipe all data off the device! All data on the device will be lost! Please use with caution.

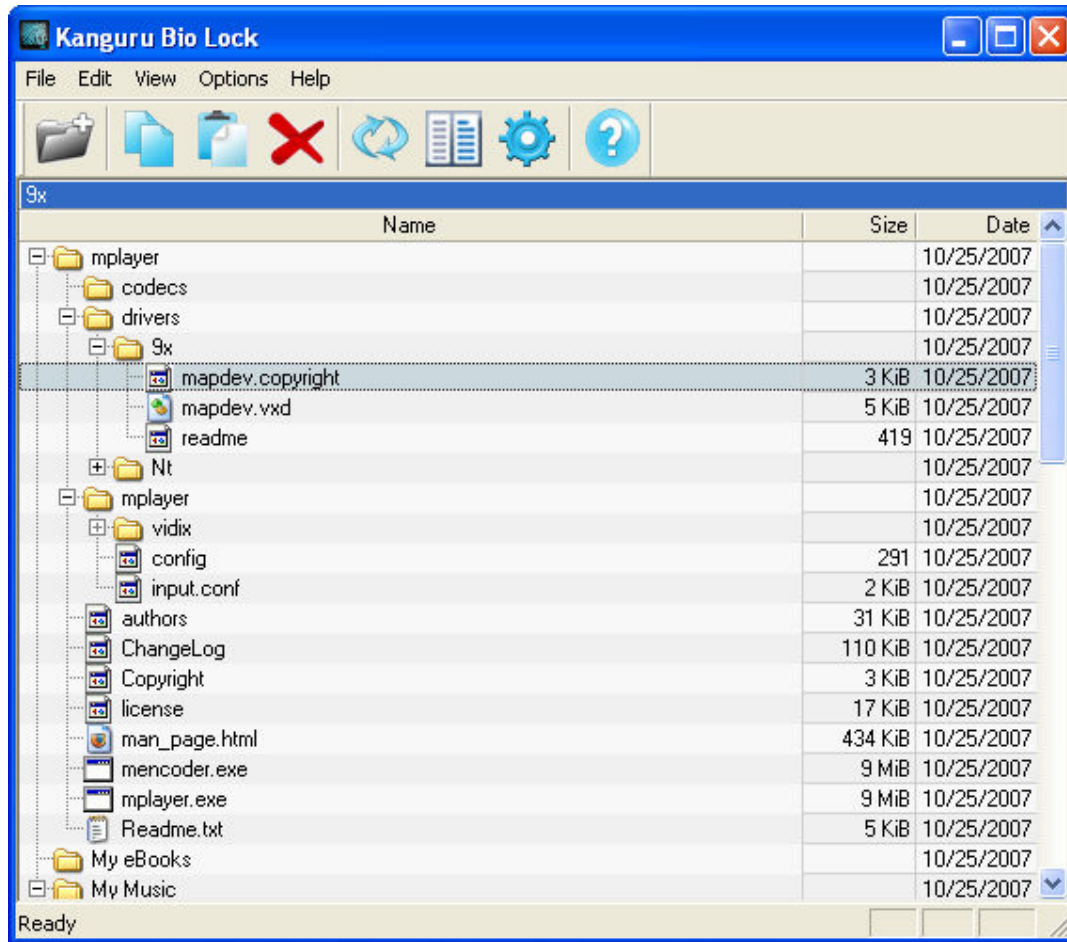
To cancel logon to the secure part of the Kanguru BioAES, simply press the **<Cancel>** button. Reinserting your Kanguru BioAES or manually running BioLockLauncher.exe will bring this logon window back.

10.1. Encrypting files and folders

A key feature of the Kanguru BioAES is Drag & Drop functionality, allowing you to simply drag files that you wish encrypt with high level 256bit AES onto the BioLock interface window. Kanguru BioLock automatically encrypts these files, ensuring that your data stays safe and private.



You can see the status of file encryption/decryption with the help of the progress bar. When the bar reaches the end, your files have been copied and encrypted.



Navigating through your encrypted files is just like using Windows Explorer. Clicking on an item with the right mouse button will give you access to options such as “Refresh”, “Copy” and “Delete”. Double clicking with the left mouse button will allow you to open a file with its default handling application.

Note: before dismounting your secure drive and/or unplugging the Bio AES, you must save and close any applications accessing files on your secure drive. Failure to do so could result in loss of data or windows errors.

After the secure drive is unlocked, the BioLock interface appears to allow copying and encrypting/decrypting of files. **Copying files from your hard drive to the Kanguru BioAES through Windows Explorer is not recommended!** If you happen to do this accidentally, then your files will be encrypted automatically regardless. You will notice that the files you have copied via Windows Explorer have disappeared from the drive. This is because Kanguru BioLock automatically encrypted and moved your files into encrypted folders. You can now find these files using the BioLock interface.

We recommend copying files to your Bio AES by using the BioLock interface only. Either utilize the **Drag & Drop** feature, or the shortcut keys for copying and pasting, **Ctrl+C** and **Ctrl+V**. The commands **Right Click → Copy** and **Right Click → Paste** are also allowed.

In the toolbar area of Kanguru BioLock you can find additional icons that you can also use to copy and encrypt your files. This toolbar is shown below.



Note: These files are saved on the private partition of your biometric portable storage device and they are only accessible when the Kanguru BioLock interface is running.

When you exit the BioLock interface, the secure partition of the Bio AES, labeled “**Kanguru Bio**” will revert back to the public partition and all encrypted files on the Kanguru BioAES will not be accessible.

To exit Kanguru BioLock application, select the File menu and choose **Exit**, or simply click the “**X**” button in the upper-right corner of the BioLock application window.

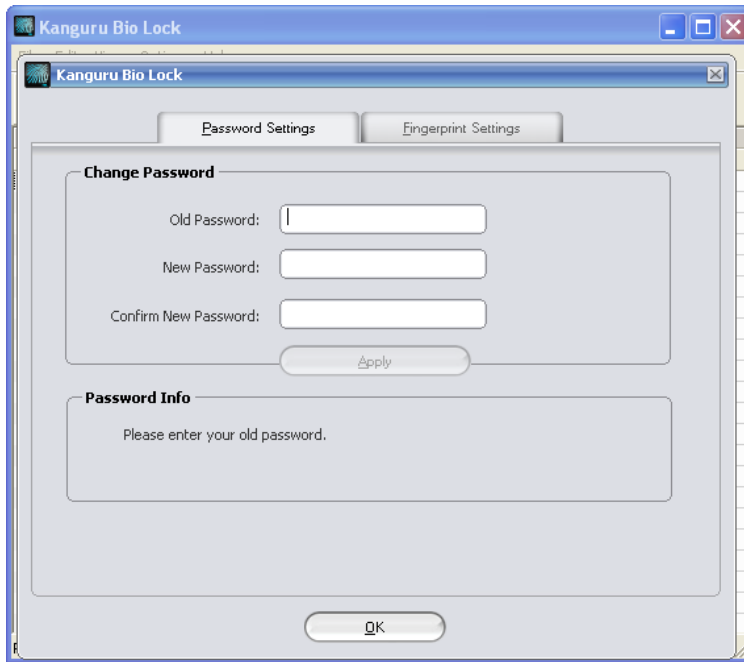
Do not disconnect the Kanguru BioAES without properly exiting the Kanguru BioLock application. Doing so may result in file damage or corruption.

10.2. Security settings

The security settings can be modified from within Kanguru BioLock. After logging in, you can modify your password and add or remove fingerprints. You can access the security settings menu by selecting **Options → Security Settings** from the toolbar menu or by pressing the hotkey **Ctrl + O**.

10.2.1. Password Settings

To change your password, first enter your current password in the box labeled **Old Password**, then enter the new password you wish to use in the **New Password** box. Finally, confirm this new password once more and once all three fields are completed appropriately, click the **<Apply>** button. A pop up window will notify you that the password change was performed successfully.



10.2.2. Fingerprint Settings

To add a new fingerprint, click the finger you wish to add or type the number that corresponds to the finger you wish to add. The finger tip will blink gray when selected.

Once the finger you wish to add is selected, slide the correct fingerprint across the sensor. In order to enroll the fingerprint correctly, you will be required to slide the finger top across the Kanguru BioAES sensor a minimum of 3 times. If you have trouble, please press the **See fingerprint enrollment tutorial** button to view a quick tutorial on how to enroll a fingerprint.

To delete a fingerprint record, simply click the tip of the finger that you wish to delete or press the corresponding number key. These fingers should have a green fingernail tip. When prompted if you are sure you wish to delete, click YES.

11. Safely remove hardware

Before you unplug your Kanguru BioAES from the USB port of your computer, you should use the “**Safely Remove Hardware**” option from the system tray, otherwise you risk corrupting the data on your Kanguru BioAES Drive.

To Safely Remove Hardware, left click on the system tray icon, and then select the Drive you want to remove from the list.

Windows XP/2000:



Windows Vista:



A message will appear indicating that the portable storage device can now be securely removed. If a message saying “**The device cannot be stopped right now**” appears, please make sure any Windows Explorer windows or applications accessing files on the Bio AES are closed. Then try again.

12. Tech Support

If you experience any problems installing your Kanguru BioAES or have any technical questions regarding any of our products, please call our tech support department. Our tech support is free and available Monday thru Friday, 9am to 5pm EST.

Call 1-508-376-4245 or

visit our website at www.Kanguru.com