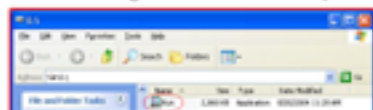


# KANGURU BIO DRIVE QUICK START GUIDE

**Please Note:** Windows 98/98SE users must first install a USB driver to gain access to the KanguruMicro Drive. To install these drivers, insert the included CD and run the Setup.exe file. An installation wizard will complete the installation.

1. Insert the Kanguru Bio Drive and open the Run.exe file.



2. Enter the Serial Number included with your drive and click "OK".



3. You are now ready to enroll up to 5 fingerprints. Please select one of the blue fingers to begin. The program will instruct you to place your finger on the sensor several times to get an accurate scan of your prints. The program will read "Fingerprint OK" when it's collected enough data.



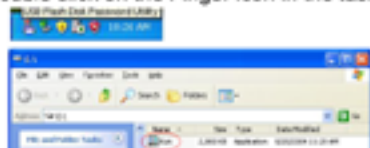
Note1: You must center your fingerprint on the sensor in order to get an accurate reading.

Note2: Adjusting the "Secure Level" will increase the sensitivity of the rejection rate. The sensor will only accept exact matches so you may have to enter your prints more than once.

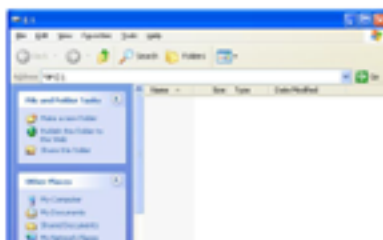
Note3: There is an optional Rescue Password that will allow you to bypass the fingerprint reading.

Once you have registered one fingerprint you can begin using the drive.

4. The next time you insert the Kanguru Bio Flash the "unlock USB Flash Disk" pictured below should appear. If it doesn't appear right away, you can simply open the Run.exe program on the drive or double click on the Finger icon in the taskbar

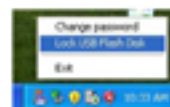


5. When the drive has been unlocked the secure portion of the drive will appear under My Computer, under the same drive letter.



## Locking the Drive:

You can lock the Kanguru Bio drive by either removing the drive for the pc, or by right-clicking on the Finger icon in the taskbar and selecting "Lock USB Flash Drive".



## Formatting the Drive

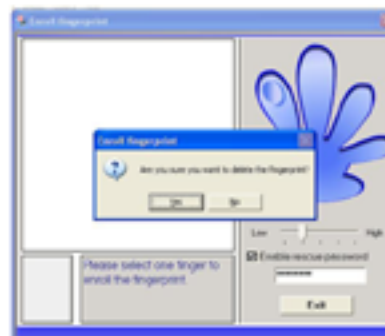
Please note, the Kanguru Bio Drive can only be formatted if the drive has been unlocked. You will get a "Disk is write-protected" error if you attempt to format the partition that Run.exe is located in.

## Enrolling Additional Fingerprints

1. Insert the drive, but do not unlock the drive. Instead, right click on the Finger icon in the taskbar and select "Change Password".
2. Place the enrolled finger on the sensor and you should now have access to the setup screen.
3. Select a new finger to enroll and follow the instruction on the screen as you did before.

## Deleting Enrolled Fingerprints

1. Insert the drive, but do not unlock the drive. Instead, right click on the Finger icon in the taskbar and select "Change Password".
2. Place the enrolled finger on the sensor and you should now have access to the setup screen.
3. Select one of the enrolled fingerprints to delete, and press "OK".



## Tech Support:

If you experience any problems using your Kanguru Bio Drive, or have any technical questions regarding any of our products, please call our tech support department. Our tech support is free and available Monday through Friday, 9am to 5pm EST.

Call 1-508-376-4245 or  
Visit our website at <http://www.kanguru.com>