



Kanguru BioSlider II

User Manual



Trademarks and/or registered trademarks are the property of their respective owners:

The information presented in this publication has been carefully prepared and is believed to be correct at the time of publication. However, no responsibility will be assumed for any inaccuracies. Specifications are subject to change without notice.

Please be aware of the following points before using your Kanguru BioSlider II.

Copyright© 2007 , Kanguru Solutions. All rights reserved.

All brand or product names are trademarks of their respective companies or organizations .
Kanguru Solutions will not be held responsible for any illegal use of this product nor any losses incurred while using this product. The user himself is responsible for the copyright laws, and is fully responsible for any illegal actions taken.

CUSTOMER SERVICE

To obtain service or technical support for your system, please contact Kanguru Solutions Technical Support Department at 508-376-4245, or visit www.Kanguru.com for web support.

LIMITED WARRANTY

Kanguru Solutions guarantees that every Kanguru QS2 will be free from defects in workmanship and materials for 1 year from the date of purchase. The Hard Drive installed in the QS2 is covered for 3 years. This warranty does not apply if, in the judgment of Kanguru Solutions, the product fails due to damage from handling, accident, abuse, misuse, or if it has been used in a manner not conforming to the product's instructions, has been modified in anyway, or the warranty labels have been removed. If the product proves defective during this warranty period, call Kanguru Solutions Technical Support in order to obtain a RMA required for service. When returning a product, mark the RMA number clearly on the outside of the package, and include a copy of your original proof of purchase.

In no event shall Kanguru Solutions' liability exceed the price paid for the product from direct, indirect, special, incidental, or consequential software, or its documentation. Kanguru Solutions offers no refunds for its products after 30 days of purchase. Kanguru Solutions makes no warranty or representation, expressed, implied, or statutory, with respect to its products or the contents or use of this documentation and all accompanying software, and specifically disclaims its quality, performance, merchantability, or fitness for any particular purpose. Kanguru Solutions reserves the right to revise or update its products, software, or documentation without obligation to notify any individual or entity.

Kanguru Solutions
1360 Main St., Millis, MA 02054
508.376.4245 • Fax 508.376.4462
www.kanguru.com

Table of Contents

Chapter 1: Introduction.....	4
Chapter 2: Installation Guide.....	6
Chapter 3: Starting the BioSlider II.....	10
Chapter 4: Recovery.....	18

Chapter 1 : Introduction

USB 1.1/2.0 Kanguru BioSlider II

Storing, moving, and securing the data has never been easier. The Kanguru BioSlider II is equipped with encryption technology that allows only authorized users to access your data. The BioSlider II is available in multiple capacity versions to provide enough space to store confidential documents, presentations, high-resolution photographs, videos, and any other personal/private files you wish.

Features

- Portable USB 1.1/2.0 Kanguru BioSlider II equipped with biometric security to prevent confidential information being accessed by others
- Fingerprint scan (or password) required to obtain the data from the BioSlider II
- No software or driver install necessary for Windows 2000 and XP
- Reliable data retention

Dimensions: 85mm x 27mm x 13mm

Weight: Approximately 19g

Available Capacities: 256MB, 512MB, 1GB, 2GB, 4GB, and 8GB.

The Kanguru BioSlider II is one of the most secure and developed data storage devices on the market. It utilizes leading-edge biometric technology, and a user can only access the hidden secure files upon providing his/her identity that is approved by the scanner's authentication. All data saved on the BioSlider II is automatically hidden and encrypted.

The BioSlider II is equipped with advanced high-definition sensor to make it secure and unexposed.

Hardware Requirements

- Pentium @ 100MHz (minimum)
- 32MB RAM (64MB recommended)
- 1 USB Port

Compatible Operating Systems :

- Windows 98SE with Device Driver
- Window 2000/ME and Windows XP

System Requirements

- A. Plug-in the BioSlider II only after the Windows 98SE driver has been installed.
(Windows 98 Users Only)
- B. Be sure you have Windows 2000 Service Pack 4 or Windows XP SP2 installed from Microsoft Update.

Before Use

- A. Keep the BioSlider II away from heat, direct sunlight, and moisture. Do not bend, flex, or drop the BioSlider II
- B. To prevent data loss and/or damage to the BioSlider II, do not remove the BioSlider II from the USB port while data is transferring
- C. Keep the sensor away from sharp objects, such as keys and knives
- D. Do not store the BioSlider II in dusty, dirty areas or conditions
- E. Do not paint the BioSlider II. Paint will clog the parts and prevent proper operation
- F. On the side of the BioSlider II is a small dipswitch, which allows you to protect data from accidental erasure. The driver will not allow copying to or erasing of the contents on the drive. You may slide the switch from the left (unlocked) position to the right (locked) position.

Chapter 2: Installation Guide

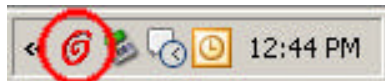
Windows ME/2000/XP Installation

No driver installation is required for Windows ME, 2000 or XP operating systems as Windows has built-in drivers to support the BioSlider II. Plug the BioSlider II into a USB port and it will be recognized by the system. Double click “My Computer” on the desktop; you will see a “Removable Disk” drive icon, which represents the BioSlider II. To start, double click the Drive labeled as ‘FP Software’ (BioSlider II Setup).

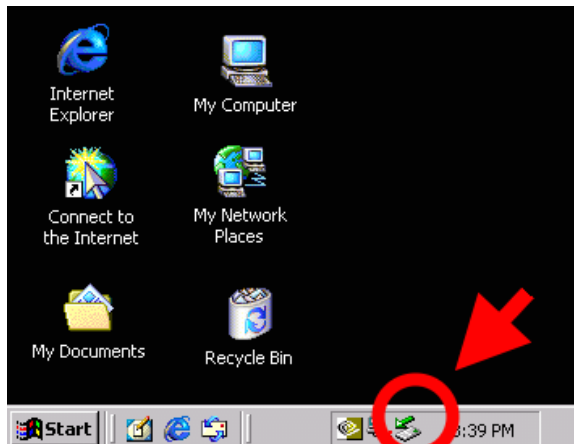


Removing the BioSlider II under Windows ME /2000/ XP

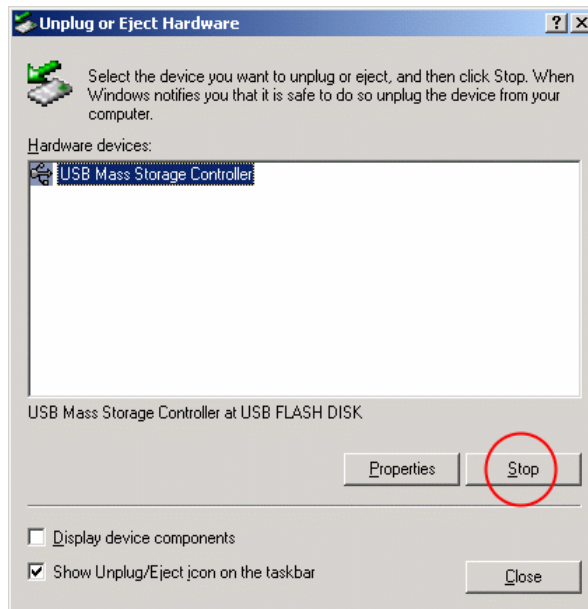
1. Right click the “Red Finger Print” icon in the taskbar and select “Exit”



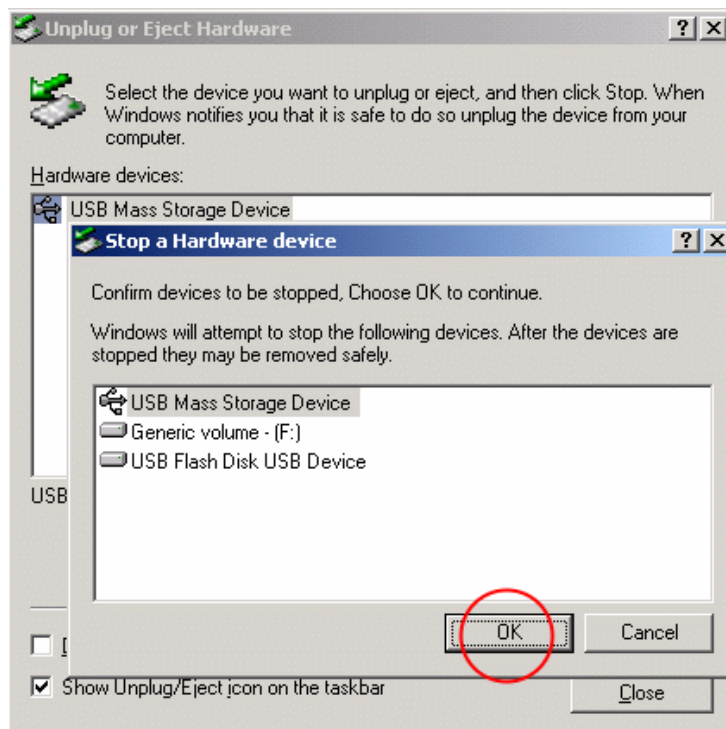
2. Double click the “Unplug or Eject Hardware” icon on the bottom right of the screen.



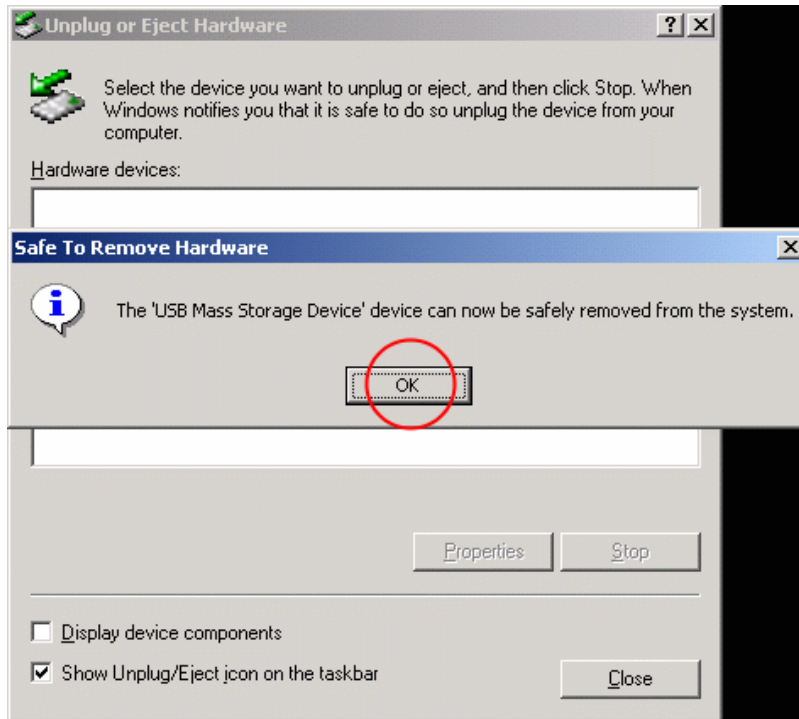
3. Click “Stop” in the Unplug or Eject Hardware Window.





4. Select “USB Mass Storage Device” and click “OK”



5. Click “OK” and remove BioSlider II



 Make sure the LED is not flashing before removing the BioSlider II. If you remove the BioSlider II while the LED is flashing, it could result in data loss and damage to the files and damage to the BioSlider II itself.

 If you do not follow the above procedure when removing the BioSlider II, data may be lost due to a write cache issue .

Windows 98SE Installation

1. Plug-in the BioSlider II to any available USB port of your computer
2. Insert the driver CD
3. Browse the CD to the Win98 Driver folder and run the setup.exe file.

Removing the BioSlider II under Windows 98/ 98SE

1. Right click the “Red Fingerprint” icon in the taskbar and select “Exit”



2. When using Windows 98SE, please remove the BioSlider II by unplugging the device.



Make sure the LED is not flashing before removing the BioSlider II. If you remove the BioSlider II while the LED is flashing, it could result in data loss and possible damage to the files and the disk itself.



If you do not follow the above procedures when removing the BioSlider II, data may be lost due to a write cache issue.

Chapter 3: Starting the USB BioSlider II

The BioSlider II is a removable device to your PC. Plug it into a USB port before using it.

NOTE: You have to click “Unplug or Eject” icon in the Windows toolbar before removing the USB BioSlider II from the system. Windows 98SE does not have this function (icon), so you must be careful when unplugging the BioSlider II in Windows 98SE. It is your responsibility to make sure all data transfer has been completed before the device is unplugged. The access LED in USB BioSlider II will stop flashing after data is transferred. This is a good indication that you can unplug the BioSlider II safely.

Fingerprint Enrollment Adaptation

In order to maximize access security and to minimize the possibility of incorrect identification, obtaining accurate fingerprint images is crucial for the enrollment process.

The enrollment process consists of installing a complete digital image of your fingerprint pattern from consecutive scanned images.

To obtain the best result, select the section of your finger which will present unique, clear rib and valley patterns.

Step 1. Place your finger towards the top of the BioSlider II; close to the USB connection



Step 2. Slide your finger down towards the other end of the BioSlider II

Step 3. Apply just enough pressure with your finger so as to obtain a sharp image by the scanner.



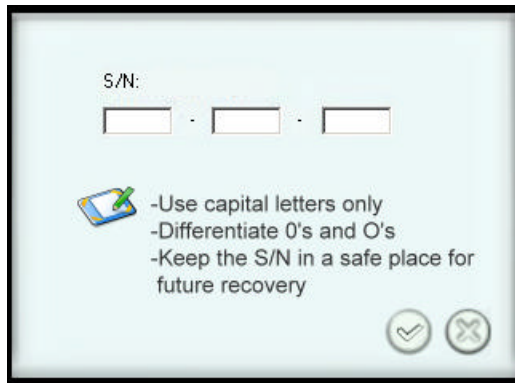
It is highly recommended to use the index finger, as it will present the best fingerprint image. In addition, enroll the identical fingerprint image more than once to ensure successful verification, and to best capture the characteristics of user's fingerprint image.

First time Enrollment Procedure s

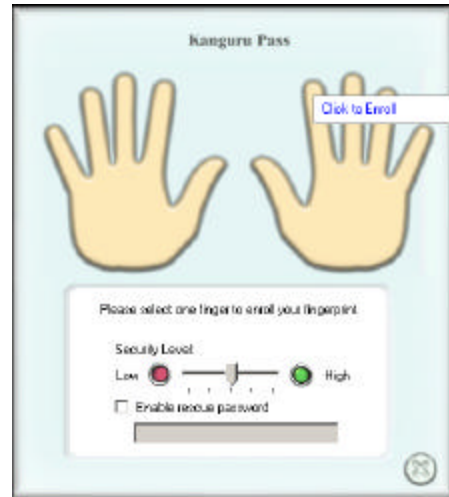
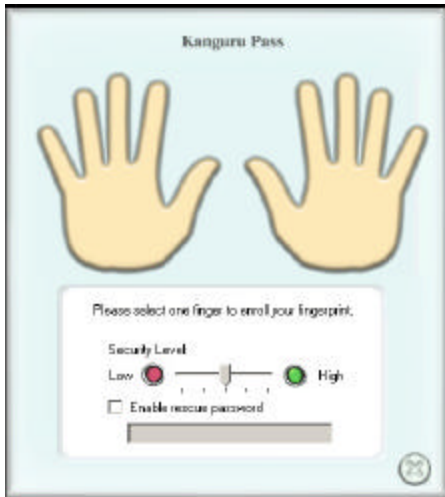
1. Plug in the BioSlider II to any USB port available in your PC.
2. Open the "FP Software" drive and click "Setup"



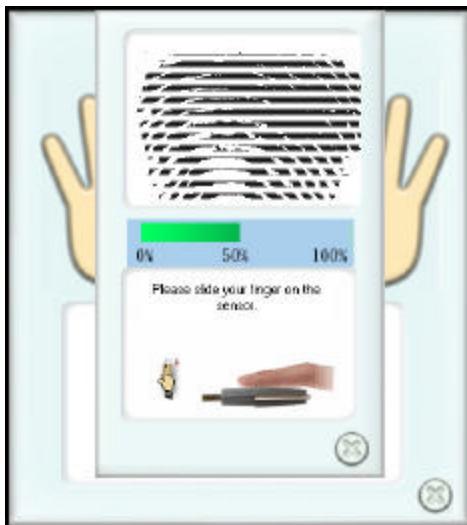
3. Enter the serial number provided in your package and click "ok" after completed
Note: You must use all capital letters. Also make sure to use 0's and O's when appropriate.



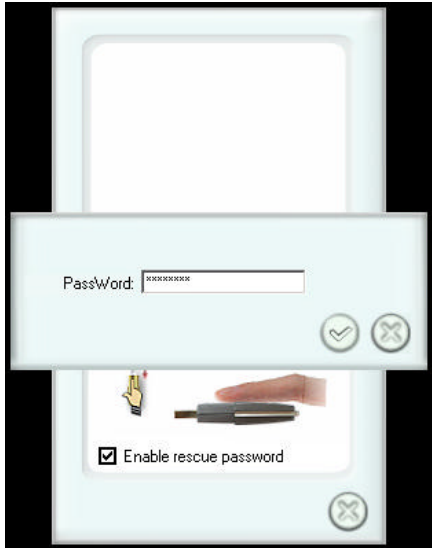
4. Enroll your fingerprint by clicking one of the fingers.



5. It will require the user to take **at least** 3 to 7 times to enroll successfully. You can adjust the “level of security” from low to high. Users can decide the degree of complexity when the BioSlider II identifies the user’s fingerprint image. This will can increase the print complexity and therefore security at the risk of higher false negatives rates.

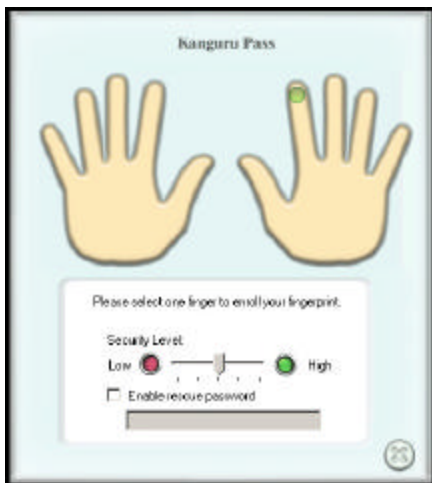


6. **Enroll “Rescue Password”**: If you wish to enter a password (optional), select the “enable rescue password” and enter at least a four digit passwords (numbers or letters).



⚠ It is highly recommended to enter passwords more than six characters in length.

7. A green dot will be shown on the appropriate finger after the enrollment is completed. Click the “X” to exit the enrollment.



⚠ It is recommended to equip the BioSlider II with fingerprint images as well as password functions. The password function will act as secondary access option. In the event of sensor damage, unclear fingerprint images or loss of fingerprints, the password can replace the fingerprint images to


become the primary access security



Some users may have distinct fingerprint images, others may not. In addition, some individuals may take a short time to enroll their fingerprint images, others may have to take a longer time. It is important to follow the procedure s completely to enroll a clear fingerprint image so that any risk of possible data theft or loss can be avoided.

Unlock USBioSlider II:

Accessing the Secure Partition:

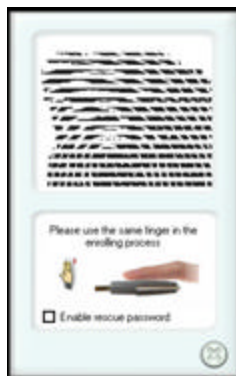
1. Right click the ‘Red Fingerprint’ icon  and select ‘Open’.



2. Click on the ‘Kanguru-Pass’ menu item.



3. Slide your finger so the sensor can read your fingerprint.

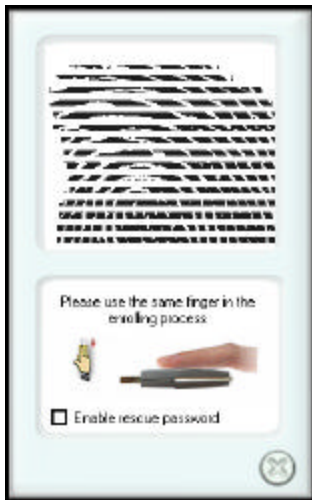


- Access to the secure encrypted drive will be visible once the correct fingerprint or rescue password is entered. If window does not automatically appear, please navigate to the 'My Computer' Screen to access the secure drive.

Note: Drive Letters May be different

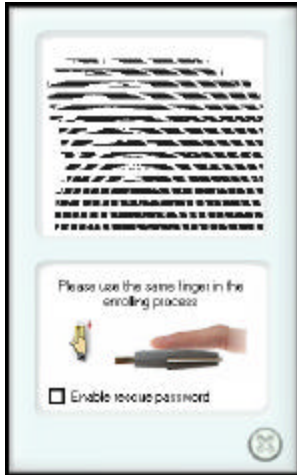


- Slide the enrolled finger or enter the rescue password to gain access to the encrypted area.

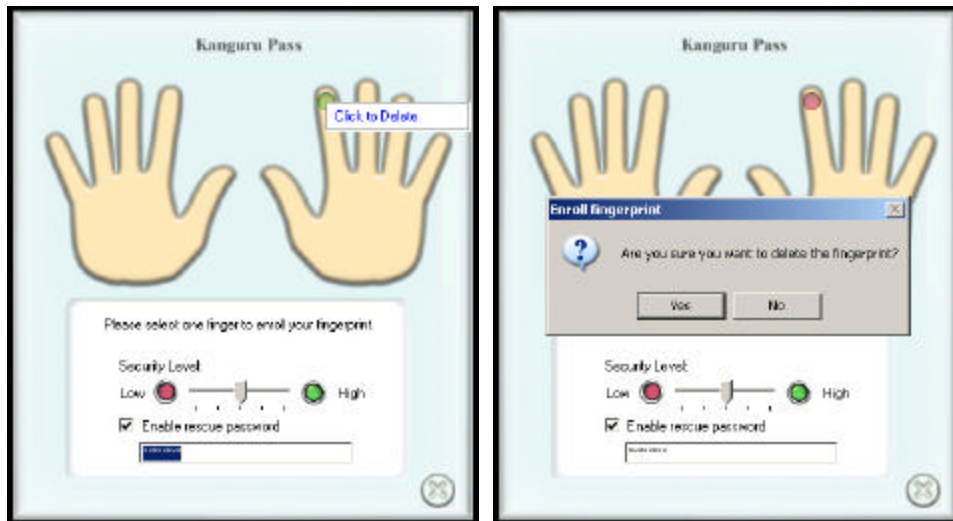


Enroll additional/delete fingerprint images (select change password):

- Open the FP Software and select the 'Setup' Menu. And choose the fingers you wish to add or delete.
- After a fingerprint or password has been verified, the enrollment utility will appear.



3. Click the finger that you have previously enrolled, a screen will appear. Select “Yes” if you wish to delete the fingerprint.



It is highly recommended have at least one fingerprint enrolled on the BioSlider II.

Handling and Cleaning Procedures

The fingerprint sensor must to be protected against any direct contact with metal objects, such as keys. This could result in permanent damage to the sensor and affect the quality of fingerprint image capturing performance. Make sure the provided cap is on and secured to protect the unit during transportation.

In normal use, frequent cleaning of the sensor surface is recommended. To clean the


finger drive ring and the sensor surface, follow these steps:

1. Unplug the BioSlider II from the computer.
2. Use any clean soft cloth with a household, kitchen or window cleaner.
Do **NOT** use chlorine-based cleaners, non-chlorine bleach, or chlorine-based bathroom or mildew cleaners. Chlorine based cleaners will not necessarily affect the functionality of the finger print sensor; however they can discolor the BioSlider II and could damage the circuitry surrounding the fingerprint sensor.

Do **NOT** use any solvents, such as acetone, paint thinner, turpentine, etc.
3. Lightly wet a clean cloth with one of the cleaners mentioned above (it must not be soaking or dripping wet). Gently rub the sensor surface with the cloth, slowly rotating the cloth to ensure that clean cloth is constantly used on the sensor surface.
4. After cleaning, gently dry the sensor surface with a clean soft dry cloth.

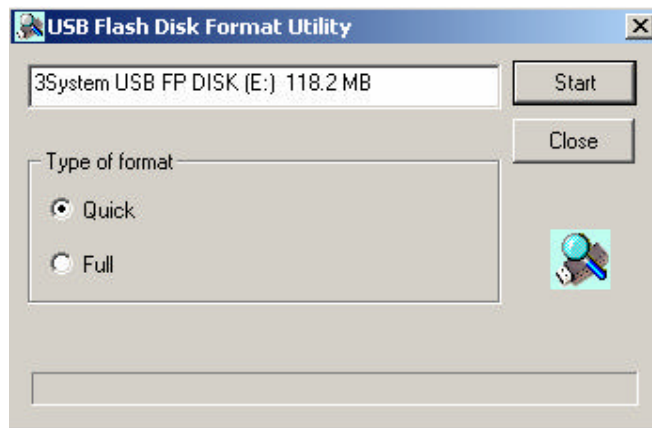
Chapter 4: Recovery

If the BioSlider II sensor or the Flash storage itself is damaged, you can use the Recovery tool to restore the unit to its factory default settings. Running the Recovery program will result in all data or files being erased in the BioSlider II

 **All data on the BioSlider II will be deleted during the execution of this procedure .**

Executing the Recovery Tool

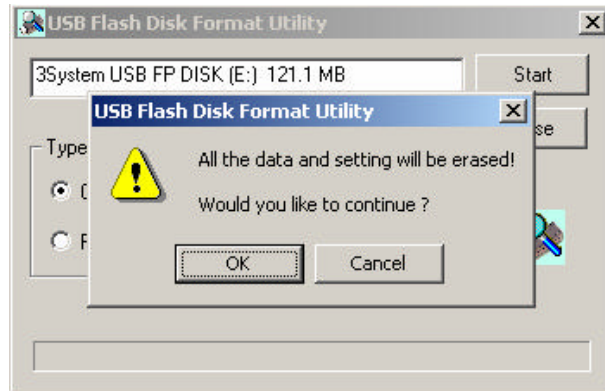
4. Plug-in the BioSlider II to any available USB port of your computer.
5. Insert the driver CD.
6. Browse to the Recovery folder.
7. Run Recovery.exe
8. Select “Quick” to perform a quick format of the unit. Select “Full” for a full format of the BioSlider II, then click “Start” to proceed



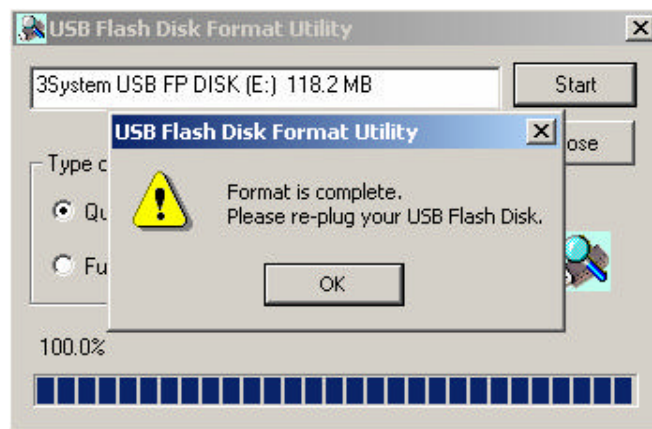
9. Enter your serial number, and click “OK”. If you have lost your serial number, you will need to contact Kanguru Tech Support at 508-376-4245 x2




10. Click “OK” to confirm BioSlider II recovery. All files on the drive will be deleted.



11. Follow the on-screen instructions to complete the Recovery process. You will be required to un-plug and re-plug your BioSlider II.



 Recovery Disk performs a basic level of format on your BioSlider II, erasing all data and files and returning the BioSlider II to the default configuration.

Tech Support

If you experience any problems installing your Kanguru BioSlider II or have any technical questions regarding any of our products, please call our tech support department. Our tech support is free and available Monday thru Friday, 9am to 5pm EST.

Call 1-508-376- 4245 or

visit our website at www.Kanguru.com