



Kanguru Control Manager Software

User Manual

NOTICES AND INFORMATION

Please be aware of the following points before using the Kanguru Control Manager Software

Copyright © 2015 Kanguru Solutions. All rights reserved.

Windows Vista®, Windows 7®, Windows 8® and Windows 10® are registered trademarks of Microsoft Inc. All other brands or product names are trademarks of their respective companies or organizations.

Kanguru Solutions will not be held responsible for any illegal use of this product nor any losses incurred while using this product. The user himself is responsible for the copyright laws, and is fully responsible for any illegal actions taken.

Customer Service

To obtain service or technical support for your system, please contact Kanguru Solutions Technical Support Department at 508-376-4245, or visit www.Kanguru.com for web support.

Legal notice

In no event shall Kanguru Solutions' liability exceed the price paid for the product from direct, indirect, special, incidental, or consequential software, or its documentation. Kanguru Solutions offers no refunds for its products. Kanguru Solutions makes no warranty or representation, expressed, implied, or statutory, with respect to its products or the contents or use of this documentation and all accompanying software, and specifically disclaims its quality, performance, merchantability, or fitness for any particular purpose. Kanguru Solutions reserves the right to revise or update its products, software, or documentation without obligation to notify any individual or entity.

Export Law Compliance

Regardless of any disclosure made to Kanguru Solutions pertaining to the ultimate destination of the specific Kanguru product, you warrant that you will not export, directly or indirectly, any Kanguru product without first obtaining the approval of Kanguru Solutions and the appropriate export license from the Department of Commerce or other agency of the United States Government. Kanguru Solutions has a wide range of products and each product family has different license requirements relative to exports.

END USER LICENSE AGREEMENT

This legal document is an agreement between you, the end user (“Licensee”), and Kanguru Solutions, a division of Interactive Media Corporation (“Licensor”).

By downloading or obtaining and using this software, you are consenting to be bound by the terms of this agreement, which includes the software license and software disclaimer of warranty.

This agreement constitutes the complete agreement between you and licensor. If you do not agree to the terms of this agreement, cease to use the product immediately and destroy any copies that you have made.

SOFTWARE LICENSE

“The software” shall be taken to mean the software contained in this package, downloaded from Licensor’s website, or included within a hardware device and any subsequent versions or upgrades received as a result of having purchased this package. “Licensee” shall be taken as the original purchaser of the software.

Licensee has the non-exclusive right to use the software only on a single computer. Licensee may not electronically transfer the program from one computer to another over any type of network. Licensee may not distribute copies of the software or the accompanying documentation to others either for a fee or without charge. Licensee may not modify or translate the program or documentation. Licensee may not disassemble the program or allow it to be disassembled into its constituent source code.

This software is licensed only to you, the Licensee. You may not permit non-Licensees to use or install it on computers or networks other than explicitly specified in this license without the prior written consent of Licensor.

This license does not entitle you to any future upgrades or updates of software or configuration files, although Licensor may decide to make such upgrades or configuration file updates available with or without an associated fee.

Licensee’s use of the software indicates his/her acceptance of these terms and conditions. If Licensee does not agree to these conditions, then he or she must return any distribution media, documentation, and associated materials to the vendor from whom the software was purchased, and erase the software from any and all storage devices upon which it may have been installed or otherwise stored.

DISCLAIMER OF WARRANTIES

The software is provided on an “AS IS” basis, without warranty of any kind, including without limitation the warranties of merchantability, fitness for a particular purpose, and non-infringement. The entire risk as to the results and performance of the software is assumed by you, the Licensee. If the software is defective, you, and not Licensor or any distributor, agent or employee of Licensor assumes the entire cost of all necessary servicing, repair, or correction.

LIMITATION OF DAMAGES

In no event shall Licensor, or anyone else who has been involved in the creation, distribution, or delivery of this product be liable for any direct, indirect, special, punitive, exemplary, consequential or incidental damages (including but not limited to damages for loss of business profits, business interruption, loss of business information, and the like) arising out of the use or inability to use such product even if Licensor has been advised of the possibility of such damages. Because some states do not allow the exclusion or limitation of liability for consequential or incidental damages, the above limitation may not apply to you.

COPYRIGHT RESTRICTIONS

This software and any accompanying materials are copyrighted. Unauthorized copying of this software or of any of the textual materials accompanying it is expressly forbidden.

You may not modify, adapt, translate, reverse engineer, decompile, disassemble (except to the extent applicable laws specifically prohibit such restriction), or create derivative works based on the software.

EXPORT RESTRICTIONS

You agree that you will not export the software to any country, person or entity subject to U.S. export restrictions.

ENTIRE AGREEMENT

This written End User License Agreement is the exclusive agreement between you and Licensor concerning the software and supersedes any and all prior oral or written agreements, negotiations or other dealings between us concerning the software. This License Agreement may be modified only by a writing signed by you and Licensor.

This agreement is subject to the laws and jurisdiction of the courts of the Commonwealth of Massachusetts, USA. If a court of competent jurisdiction invalidates one or more of the terms of this contract, the surviving terms continue in force.

This License Agreement is effective upon using the software.

Table of Contents

1. Introduction	6
2. General Operation.....	7
2.1 Establishing Connection	8
2.2 Viewing the Duplicator Information	10
2.3 Configuring the Capacity Units.....	10
2.4 Expanding the Display Area.....	11
2.5 Executing Functions	11
3. Viewing Log Information.....	12
3.1 The Control Center View.....	12
3.2 Quick View.....	13
3.3 Summary View	14
3.4 Text Files and Spreadsheets.....	15
4. TECH SUPPORT.....	16

1. Introduction

Logging capability is a useful function of the Kanguru HDD Duplicator. The logging feature can be used to keep track of duplication and/or disk wipe jobs when logs are required for auditing, and they also provide useful information that can be used by Kanguru's technical support staff to diagnose problems.

Users with a computer running Windows operating systems can connect the Kanguru Clone HDD Duplicator to their PC for robust logging. The Control Manager software was provided on the CD that accompanied your duplicator. If you did not receive a CD, or the CD was lost, please visit Kanguru's Support Site to download a copy of the Control Manager software: support.kanguru.com

System Requirements

- 32/64-bit Windows Vista, 7, 8, 10
- Administrative Rights
- 50MB available space
- USB2.0 port

2. General Operation

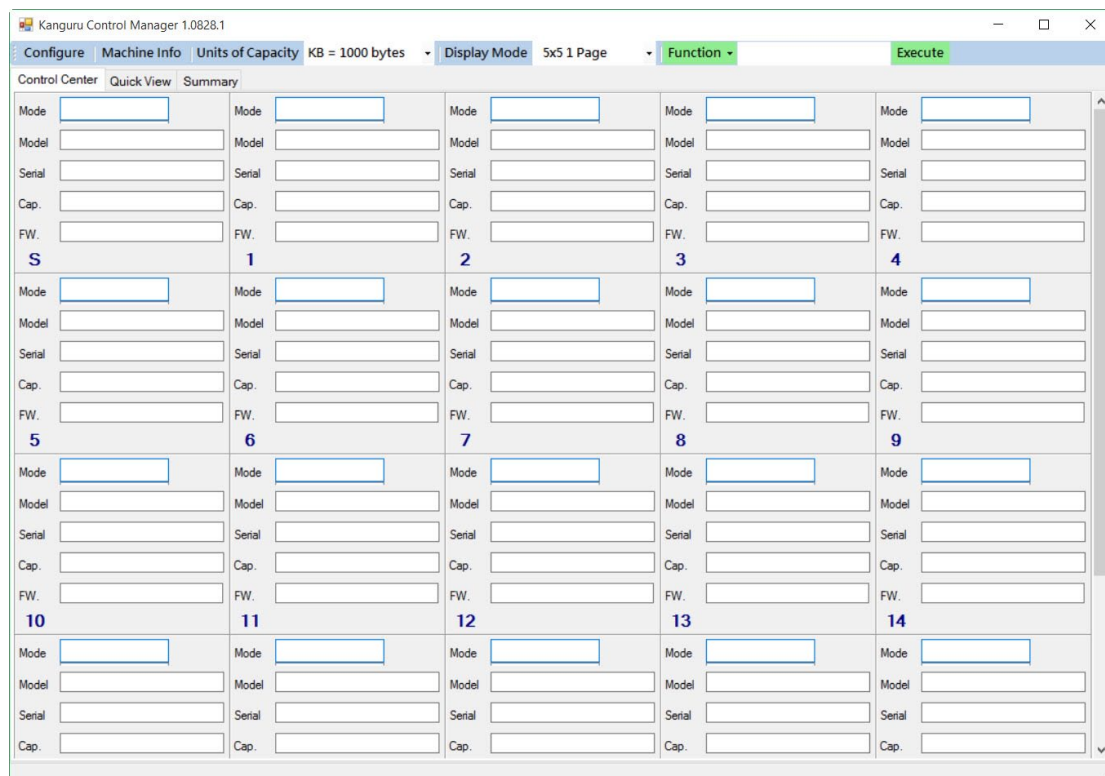
Before you can run the Kanguru Control Manager software, you will first need to connect the KanguruClone HDD Duplicator to your computer using the provided Serial to USB2.0 adapter cable provided with the duplicator. The serial end of the cable connects to the duplicator and the USB2.0 end of the cable connects to your computer.

Note: If this is the first time connecting the Serial to USB2.0 adapter cable to your computer, you will need to install the necessary device drivers. The device drivers can be found on the CD provided with your duplicator in the folder named “Serial to USB Driver”. You must have administrative privileges in order to install the device driver.

To launch the software:

1. Insert the CD that came with your KanguruClone Duplicator into your computer.
2. Open the folder named “Kanguru Control Manager”.
3. Double click on the ‘**ControlManager.exe**’ file

The Control Manager software launches. There is no installation required to run Kanguru Control Manager. It can be run as an executable directly from the CD, or you can simply copy the executable file to your local drive and run it from there.



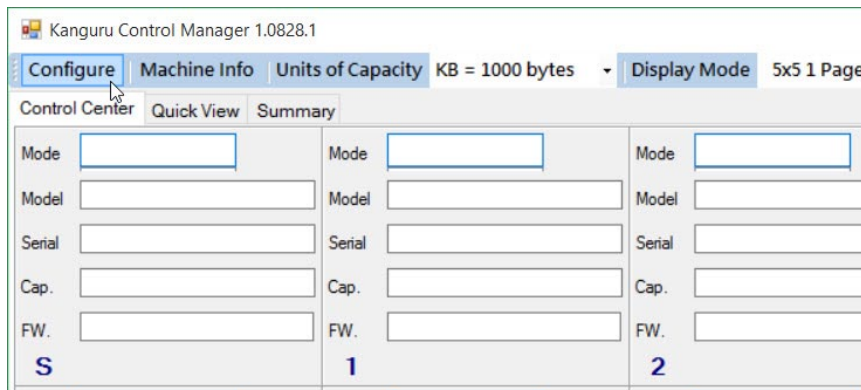
Note: If the grid display does not appear correctly the first time you run Kanguru Control Manager, click on the ‘**Display Mode**’ menu and select “**5x5 1 Page**”.

2.1 Establishing Connection

In order for the duplicator and computer to communicate, you must open a COM port between the two for sending and receiving information.

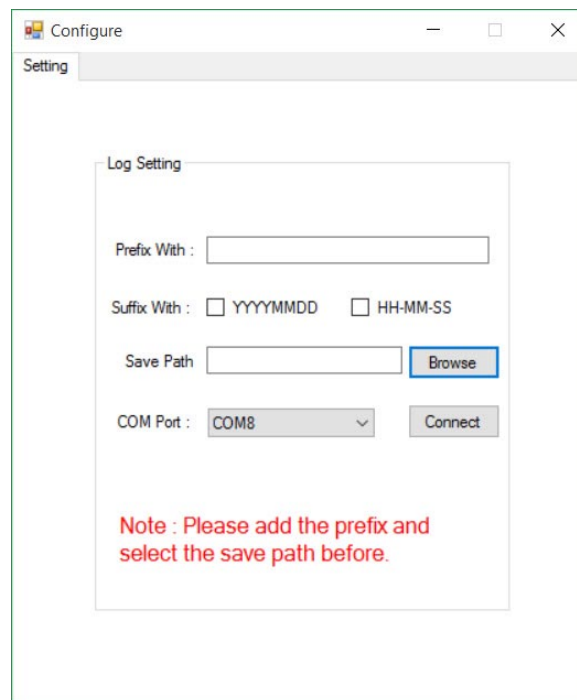
Once the Control Manager software is running:

1. Click on the ‘**Configure**’ menu.



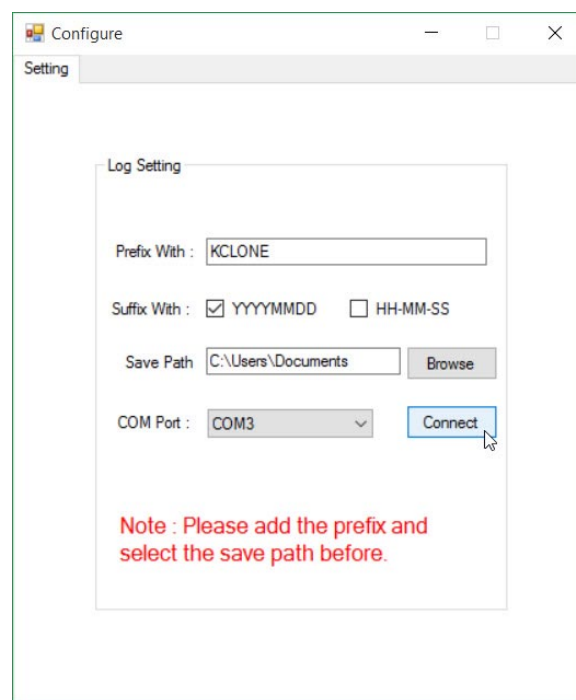
Note: If you receive an error message stating that “There are no COM ports detected on this computer”, then you either have to connect the Serial to USB adapter cable to your computer or you need to install the device driver for the Serial to USB adapter cable on your computer.

2. The ‘Configure: Settings’ window appears. This window is used to configure the file name, and location for the log files that are generated by the Control Manager software.

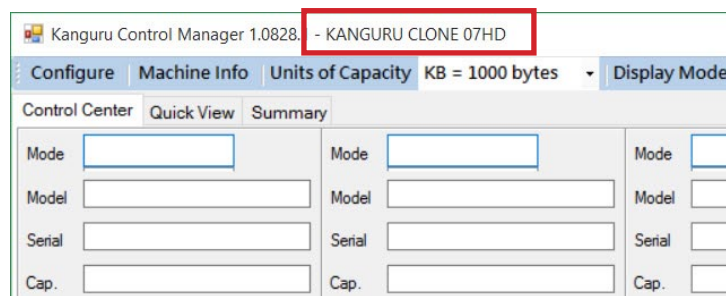


3. Enter a name in the field ‘Prefix With:’ This will be the name of the folder where the log files will be saved. All log filenames will begin with this prefix. This field cannot be left empty.

4. You can choose to add a date or time stamp at the end of the file name by checking off the 'Suffix With:' options.
 - 'YYYYMMDD' - Date stamp format 'year/month/day'.
 - 'HH-MM-SS' - Time stamp format 'hour-minute-second'.
5. Enter the directory path where the log files will be saved, or click on the **Browse button** to select the save path from a list of available directories.
6. Select a COM port from the 'COM Port' drop down menu.
7. Click on the **Connect button** to establish a connection between the duplicator and the Control Manager software.



When connection has been established you will see your duplicator model appear in the top left.

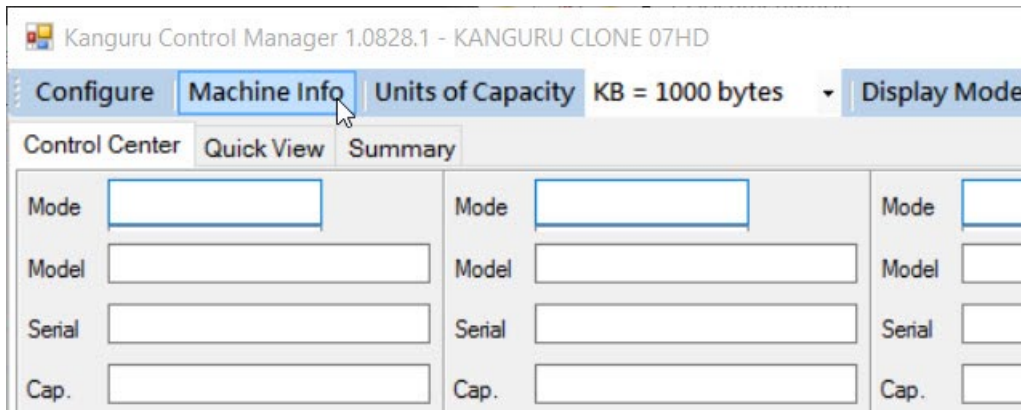


If you are not successful in establishing a connection:

- Make sure the duplicator is powered on.
- Make sure that the Serial to USB adapter cable is connected to the duplicator as well as the computer.
- Select a different COM port.

2.2 Viewing the Duplicator Information

You can view specific information regarding your duplicator's hardware and firmware version by clicking on the **Machine Info** menu. This information is useful when you need to contact technical support for assistance.

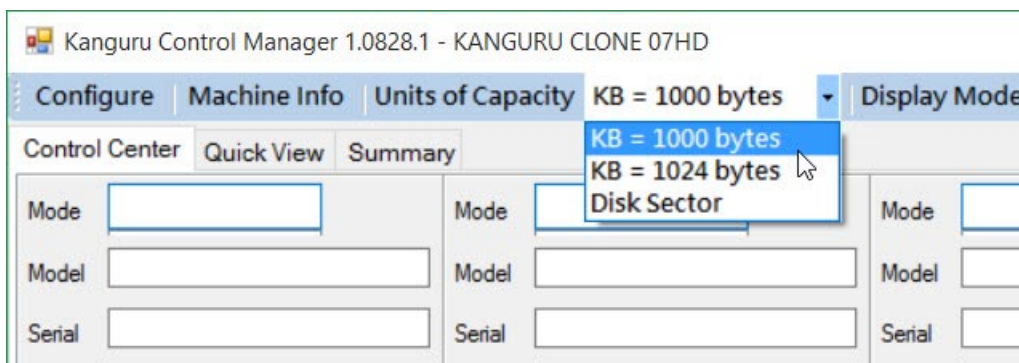


2.3 Configuring the Capacity Units

Data capacity can be calculated in a number of different ways. It is common practice to round off 1KB of data as 1000 bytes, but in reality 1KB is made up of 1024 bytes.

You can configure the Control Manager to calculate capacity as:

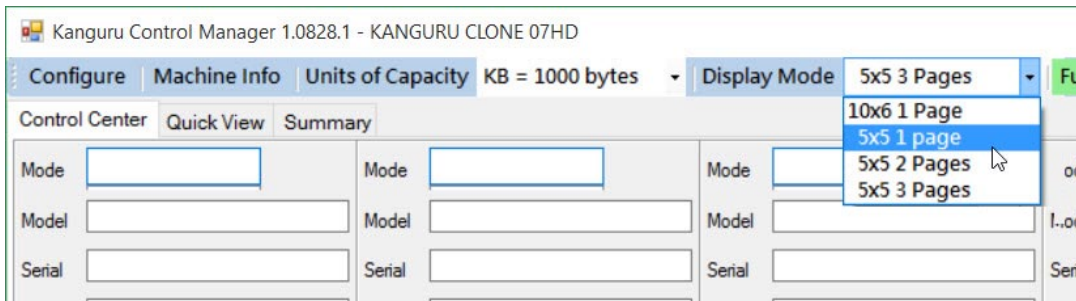
- 1KB = 1000 bytes
- 1KB = 1024 bytes
- Disk Sector



If you select Disk Sector, then the Control Manager software will record the number of disk sectors as the capacity.

2.4 Expanding the Display Area

By default the Control Manager’s Control Center display is formatted in a 5x5 grid. If you have multiple duplicators connected together in a daisy chain configuration, you can expand the display by either increasing the grid dimensions or the number of pages.

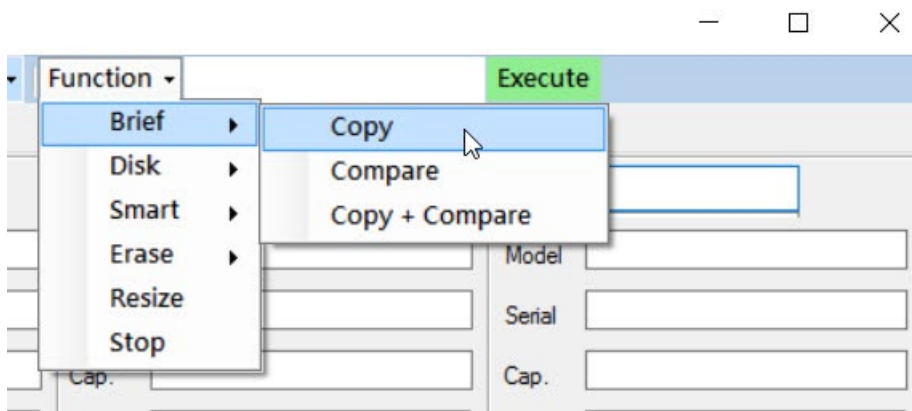


2.5 Executing Functions

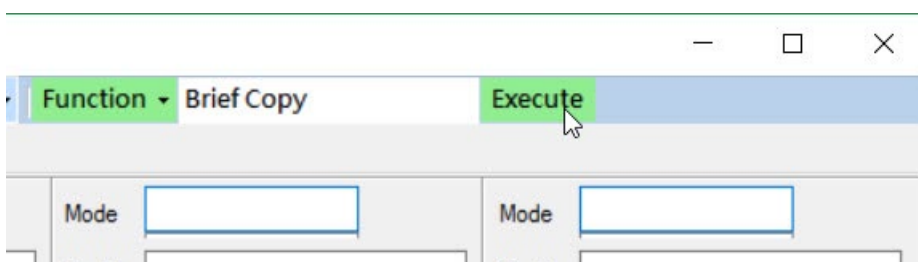
In addition to providing logging information, the Control Manager software can be used to execute functions on your KanguruClone duplicator directly from your computer.

To execute a function:

1. Click on the **Function drop-down menu**. A list of available functions appears. **Note:** Some functions may have a second-tier option that must be selected.



2. Click on the **Execute button** to execute the selected function.

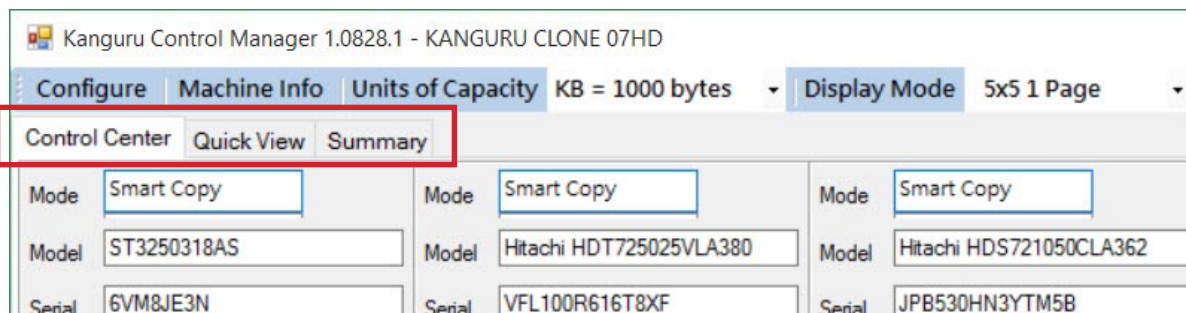


3. Viewing Log Information

The Control Manager software contains three separate windows for viewing duplication information:

- Control Center
- Quick View
- Summary

Each window will display information regarding the duplication process and the drives that are connected to the duplicator. You can switch between the different windows by clicking on the tabs located under the main menu:



Information will become available once you execute a copy, compare or erase function. No information will be displayed before then.

3.1 The Control Center View

Each block in the Control Center page's grid represents a port on the duplicator. The corresponding port number is displayed in the lower, left corner of each block.

Mode	Smart Copy	Mode	Smart Copy	Mode	Smart Copy
Model	ST3250318AS	Model	Hitachi HDT725025VLA380	Model	Hitachi HDS721050CLA362
Serial	6VM8JE3N	Serial	VFL100R616T8XF	Serial	JPB530HN3YTM5B
Cap.	250.06 GB	Cap.	250.06 GB	Cap.	500.11 GB
FW.	CC38	FW.	V5DOA7EA	FW.	JP20A3EA
S	Active	1	Active	2	Active

The Control Center window displays the following information:

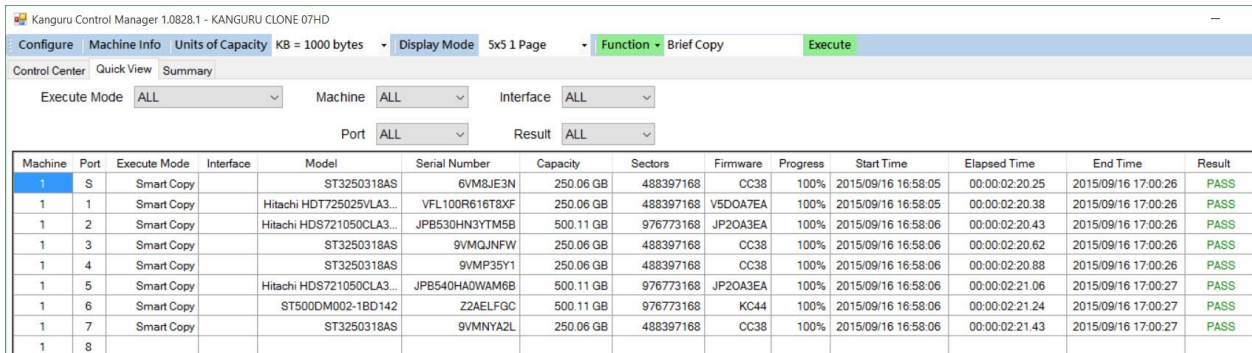
- **Mode** - The current function being run
- **Model** - The drive model connected to that port
- **Serial** - The serial number of the drive connected to that port
- **Capacity** - The storage capacity of the drive connected to that port
- **FW** - The firmware version on the drive connected to that port

An "Active" status notification will appear on the bottom of each block. The "Active" status notification will change to either "Pass" or "Fail" when the function has completed.

3.2 Quick View

The Quick View displays much of the same information as the Control Center view, but organizes the information into a spreadsheet format. Quick View provides more comprehensive information regarding the drives and the operation.

You can filter the Quick View list for specific information by configuring the filters located at the top of the Quick View window.



Kanguru Control Manager 1.0828.1 - KANGURU CLONE 07HD

Configure Machine Info Units of Capacity KB = 1000 bytes Display Mode 5x5 1 Page Function Brief Copy Execute

Control Center Quick View Summary

Execute Mode ALL Machine ALL Interface ALL

Port ALL Result ALL

Machine	Port	Execute Mode	Interface	Model	Serial Number	Capacity	Sectors	Firmware	Progress	Start Time	Elapsed Time	End Time	Result
1	S	Smart Copy		ST3250318AS	6VM8JE3N	250.06 GB	488397168	CC38	100%	2015/09/16 16:58:05	00:00:02:20:25	2015/09/16 17:00:26	PASS
1	1	Smart Copy		Hitachi HD1725025VLA3...	VFL100R616T8XF	250.06 GB	488397168	V5DOA7EA	100%	2015/09/16 16:58:05	00:00:02:20:38	2015/09/16 17:00:26	PASS
1	2	Smart Copy		Hitachi HDS721050CLA3...	JPB530HN3YTM5B	500.11 GB	976773168	JP2OA3EA	100%	2015/09/16 16:58:06	00:00:02:20:43	2015/09/16 17:00:26	PASS
1	3	Smart Copy		ST3250318AS	9VMQJNFW	250.06 GB	488397168	CC38	100%	2015/09/16 16:58:06	00:00:02:20:62	2015/09/16 17:00:26	PASS
1	4	Smart Copy		ST3250318AS	9VMP35Y1	250.06 GB	488397168	CC38	100%	2015/09/16 16:58:06	00:00:02:20:88	2015/09/16 17:00:26	PASS
1	5	Smart Copy		Hitachi HDS721050CLA3...	JPB540HAOWAM6B	500.11 GB	976773168	JP2OA3EA	100%	2015/09/16 16:58:06	00:00:02:21:06	2015/09/16 17:00:27	PASS
1	6	Smart Copy		ST500DM002-1BD142	Z2AELFGC	500.11 GB	976773168	KC44	100%	2015/09/16 16:58:06	00:00:02:21:24	2015/09/16 17:00:27	PASS
1	7	Smart Copy		ST3250318AS	9VMNYA2L	250.06 GB	488397168	CC38	100%	2015/09/16 16:58:06	00:00:02:21:43	2015/09/16 17:00:27	PASS
1	8												

In addition to the information that is shown in the Control Center view Quick View also displays:

- Both storage capacity and the number of sectors on the drive
- The operation progress
- The operation start time
- The operation elapsed time
- The operation end time

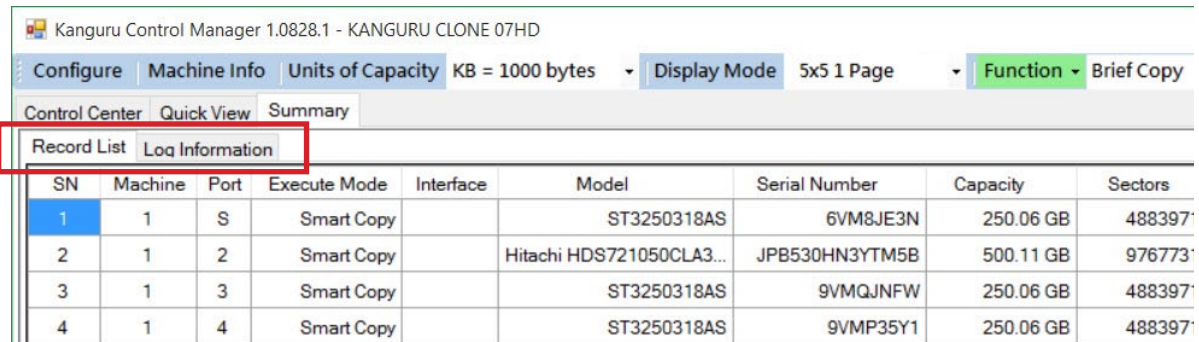
Note: The 'Progress' indicator will not display the actual progress in real-time, unless the 'Real Time Message' option is enabled on the duplicator. If the 'Real Time Message' option is disabled on the duplicator, then progress will only be shown as 100% when the operation is completed. Please refer to your duplicator's user manual for more information about enabling/disabling the 'Real Time Message' option.

Note: The operation start and end times are based off the time on your computer.

3.3 Summary View

Unlike the Control view and Quick View windows which only provide you information about the current operation, the Summary view window provides a record of all operations performed during the current session.

There are two different summary views, Record List and Log Information. You can switch between the two windows by clicking on the tabs located at the top of the window.



The screenshot shows the 'Kanguru Control Manager 1.0828.1 - KANGURU CLONE 07HD' window. At the top, there are menu items: 'Configure', 'Machine Info', 'Units of Capacity' (set to KB = 1000 bytes), 'Display Mode' (set to 5x5 1 Page), and 'Function' (set to Brief Copy). Below these are three main tabs: 'Control Center', 'Quick View', and 'Summary'. Under the 'Summary' tab, there are two sub-tabs: 'Record List' and 'Log Information', both of which are highlighted with a red box. Below the sub-tabs is a table with the following data:

SN	Machine	Port	Execute Mode	Interface	Model	Serial Number	Capacity	Sectors
1	1	S	Smart Copy		ST3250318AS	6VM8JE3N	250.06 GB	488397
2	1	2	Smart Copy		Hitachi HDS721050CLA3...	JPB530HN3YTM5B	500.11 GB	976773
3	1	3	Smart Copy		ST3250318AS	9VMQJNFW	250.06 GB	488397
4	1	4	Smart Copy		ST3250318AS	9VMP35Y1	250.06 GB	488397

- **Record List** - The Record List window provides the same information that is displayed in the Quick View window, except that the Record List displays information about both completed operations as well as operations in progress.
- **Log Information** - The Log Information window displays a comprehensive list of commands executed by the duplicator. The Log Information is not useful for end users, but can be very helpful to Kanguru support technicians for determining the cause of any problems that arise during the operation.

3.4 Text Files and Spreadsheets

In addition to displaying the log information on screen, digital copies are automatically saved to your computer. A folder is created in the 'Save Path' directory that you selected in the Configuration window (see section [2.1 Establishing Connection on page 8](#))

Inside that folder are two folders: 'Detail' and 'Summary'

The 'Summary' folder contains a .csv spreadsheet that contains all the information displayed in the Record List window. This file is useful as an audit log.

The 'Detail' folder contains .txt plain text files that contain all the information displayed in the Log Information window. These files can be provided to Kanguru support technicians when determining the cause of any problems that arise during an operation.

4. Tech Support

If you experience any problems installing your Kanguru product or have any technical questions regarding any of our products, please call our tech support department. Our tech support is free and available Monday thru Friday, 9am to 5pm EST.

Call 1-508-376-4245

Or visit our website at www.Kanguru.com



KANGURUTM
Secure. Anytime. Anywhere.

Kanguru Solutions
1360 Main Street
Millis, MA 02054
www.kanguru.com

09.23.15 v1.0 © 2015 Kanguru Solutions

Legal terms and conditions available at www.kanguru.com. Please review and agree before use. Thank you.